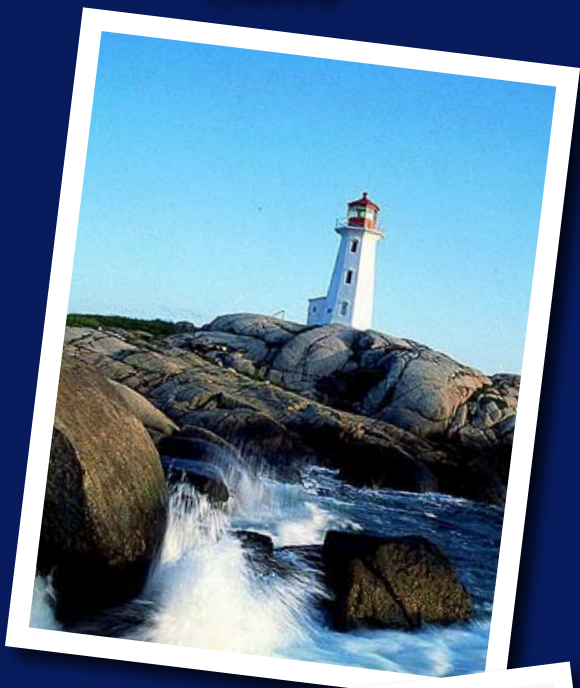


*2nd Annual
Salt Water
Classic Elite
Sale*



August 22, 2008

7:00pm

Truro, NS

Welcome

Welcome to the Maritime Simmental Association's Second Annual Salt Water Classic Simmental Sale. Breeders from the three Maritime Provinces, Nova Scotia, New Brunswick and Prince Edward Island, are pleased to showcase their cattle and share some top quality cattle with breeders from other parts of the country. Once again, we are pleased to welcome the participation of our friends from Bar 5 Simmental Stock Farms from Ontario. The addition of these cattle add to the great variety of genetics that are available.

As an added feature this year we are pleased to welcome the participation of Lobster Point Properties with an offering of a semen package from the great breeding bull, Wheatland Bull 468P "Hummer". This package will add a new dimension and interest to the sale offering. Also on offer is an embryo package from Hidden Hollow Farm. Progressive breeders from across the country are urged to consider these offerings.

Our sale offering represent a cross section of the genetic variation of cattle available to the Simmental industry. There are South African Full Fleckvieh, Canadian Full Fleckvieh and Fullblood from European ancestry as well as Canadian Red and Black cattle. There are cattle represented by a great selection of open females, bred yearlings, some more mature cattle as well as cow calf pairs. Once again there is a Full Fleck South African bull. There will be something to suit every breeder's budget and breeding needs. We urge you to select and buy with confidence.

After last years very successful First Salt Water Classic Sale, which saw bidders and buyers from a number of provinces, we have decide to follow the same format as last year. The sale will be held in conjunction with the Maritime Young Canadian Simmental Classic event and the Nova Scotia Provincial Livestock Open Show. Of added interest this year will be a reception proceeding the sale to mark the 40th Anniversary of the Canadian Simmental Association. We wish to thank the CSA for sponsoring this event. All Simmental enthusiasts and their families are invited to attend and to stay afterward for the sale. We will be please to see you there!

Although we would prefer that you were able to attend the sale in person, we do understand that not everyone can get away. However, if you are interested in any of the sale entries, but cannot attend the sale in person, feel free to contact any of the sale consignors and they will be happy to represent your interests in confidence during the sale. Come early, stay late and enjoy some wonderful Maritimes hospitality.

Sale day phones:

Bill MacLeod (506) 447-0353
Ralph Taylor (902) 899-8388,
Bruce Holmquist (403) 988-8676



Schedule of the Weekend Events

*Friday, August 22, 10:00 am
Maritime YCS Simmental Classic
Information
Jennie Palmer
(902) 288-1631*

*Friday, August 22, 5:00 pm
CSA 40 th Anniversary Reception
Special Guest
Bruce Holmquist, CSA
Industry/Member Liaison*

*Friday, August 22, 7:00 pm
Salt Water Classic Sale
Information
Bill MacLeod (506) 459-7066
Sale Day (506) 447-0358*

*Saturday, August 23, 9:00 am
NS Provincial Livestock Show
Information
Ralph Taylor (902) 895-2117
Sale Day (902) 899-8388*



Consignors:

Bar 5 Simmental Stock Farms, Ron Nolan,
Markdale, ON (519) 986-1330

Branch K Simmentals, Keith Kennedy,
Truro, NS (902) 895- 8349

Cowassaget Brook Farms, Fraser McCallum,
Tabusintac, NB (506) 779-4497

Frey Lawny Farms, Don Godfrey & Family,
Cornwall, PE (902) 566-3613

Glarro Farm, Andre Van Agten,
Petitcodiac, NB, (506) 756 -2250

Harmony Ridge Farm, Howard Pyne,
Truro, NS. (902) 895-7469

Hidden Hollow Farm, Peter & Marlene Gaunce,
New Scotland, NB (506) 383-4829

JoDreen Farm, Joe & Doreen Steeves,
Stoney Creek, NB, (506) 387-7047

Lobster Point Properties, Forbes Rafuse,
Bedford, NS, (902) 221-2296

MacLeod Simmental Genetics, Bill MacLeod,
Fredericton, NB, (506) 459-7066

Melvern Simmentals, Bill & Richard Armstrong,
Kingston, NS, (902) 765-4504

Robertson Bros. Simmentals, James Earl Robertson ,
Pictou, NS, (902) 485-6236

Sandstone Fleckvieh Simmentals, Don Jenkins,
Charlottetown, PE, (902) 629-1249

Timberwood Farm, Jacob and Lacey Fischer,
Amherst, NS, (902) 661-0766

Tryon Fleckvieh Simmentals, Harry & Frank Robblee,
Crapaud, PE (902) 658-2300

Windy Knoll Farm, Bruce & Shelley Parsons,
Kingston, NS, (902) 765-8446

Polled & Homo Black Bull - Semen



5 straws of semen on offer!

 Wheatland **BULL** 468P "Hummer"

622096

LER 468P

Polled

2 March 2004

Sire: CA-BPG538095 HC POWER DRIVE 88H
 BURNS BULL X339U
 WLE POWER STROKE
 NICHOLS JOLIETTE C75
 IRISH BLACK KNIGHT
 KAPPES LADY IRISH F88
 KAPPES LADY DAKOTA D64

Dam: CA-PG542693 WHEATLAND LADY 902J
 ER RED DECK 639D
 ER MISS MAX 57Y
 ER BIG SKY 545B
 WHEATLAND LADY 702G
 MISS WHEATLAND 519E

| | |
|------|------|
| EPDs | |
| CE | 7.2 |
| BW | -1.3 |
| WW | 20.9 |
| YW | 48.0 |
| MW | 26.7 |
| Milk | 16.3 |
| MCE | 3.7 |

Birth wt. 80lbs
 Weaning wt - 880lbs

"Hummer", 468P, is one of the most complete and competitive bulls in the history of the Simmental Breed. Hummer has an undisputed show career as 2004 Canadian Western Junior Bull Calf Champion and Reserve Grand Champion Bull, 2006 World congress Grand Champion Bull, 2006 Agribition Grand Champion and 2006 Royal Bank challenge Supreme Champion Bull and has now begun his legacy as a great breeding bull. Hummer has proven himself to be a calving ease sire following a three-year calving record. His calves are extremely vigorous at birth and possess very desirable phenotype. His maternal strengths come to the top with his daughters having projected 14.8 maternal milk EPD. He is mothered by Wheatland Lady 902J who has mothered as many herd bulls as any cow in the Simmental breed. This past sale season a 902J son topped the Wheatland Sale at \$44,000. At a later date 468P semen will be available in the Maritimes on the open market; however, in the meantime his semen is exclusive to Lobster Point Properties. This will be your opportunity to be the first breeders in the Maritimes to use this record setting sire. Hummer is owned jointly by Wheatland Cattle Co., Bienfait, SK and Lobster Point Properties, NS

CONSIGNED BY:

**Lobster Point Properties - John & Forbes Risley & Rafuse
 Bedford, NS 902 275-4713**

Red Purebred Embryos
Four # 1 Non Exportable Embryos



2

Four # 1 Non Exportable Embryos

PVF-BF BF26 BLACK JOKER
 S-PAW MUTUAL FUND 301M
 ER MISS MAX 57Y
 Sire: CA-676522 S-PAW RED TANNER 54T
 RPP GOODTIME 60G
 KH-SUNRISE RED LADY
 BDV BLACK SUSANNE
 TNT DYNAMITE BLACK L137
 TODD'S RED CLOUD 12P
 SFM 33M
 Dam: CA-652122 TODD'S FOOLS HAZEL 24S
 HS ALTA'S TOPLINE K57
 TODD'S FOOLS KEEPSAKE 25N
 TODD'S NO FOOLIN' 10L

| Projected EPDs | |
|----------------|------|
| CE | 4.1 |
| BW | 3.5 |
| WW | 33.3 |
| YW | 76.1 |
| Milk | 6.3 |
| MCE | -0.5 |

~Hazel was third in her class at the Scotia Bank Junior Heifer show at the Royal.

~Tanner 54T was a well liked bull at Farm Fair 2007, first in his group. first in his class at Agribition. BW 80lbs, 205 wt 890lbs, Jan 22 2008 wt 1475lbs.

~ This is going to be a spectacular combination.

CONSIGNED BY:

Hidden Hollow Farm - Peter & Marlene Gaunce
New Scotland, NB 506-383-4829

Male - SA Full Fleckvieh



3_{Bar 5} SA Miraculous 839T

691954

CO 839T

Horned

10 August 2007

Sire: CA-676462 KYKSO HADAU
KYKSO HAMI
KYKSO MIJAL
MON-BIYOU PRESIDENT
KYKSO JUPRES
KYKSO JUKAI 79
Dam: CA-676453 ELDANDI GEZMI
SALERIKA EVAN
LEEUPOORT PRIMA
FREDZEL SKOONLIEF 83
TOVERBERG KROON 81
RU-DEV GEZINA
KYKSO GEZKADI

| EPDs | |
|------|------|
| CE | -1.9 |
| BW | 3.9 |
| WW | 30.5 |
| YW | 50.5 |
| MW | 26.8 |
| Milk | 11.5 |
| MCE | -0.8 |

Birth wt. 87lbs

An outstanding off age bull out of a new SA cow "Eldandi Gezmi". His full sister was the high seller at the Bar 5 Sale in the spring. This bull comes with a great disposition, and on top of that being one of the high gainers in the bull test. He is unrelated to anything in North America. This bull is sure to leave his mark. Well balanced and smooth, 839T is going to be an asset to any herd.

CONSIGNED BY:

Bar 5 Stock Farms - Ron Nolan

Markdale, ON

519-986-1330

Open Female - Full Fleckvieh



4 Sandfleck ULTRA 6U

692039

SFS 6U

Horned

20 February 2008

ANTONIUS
GIDSCO APOLLO 3F
MFL BRENDA 65B
Sire: CA-581559 SMITHBILT MOLSON 21M
DEMBY MR IMAGE 853B
JERICO'S DEIRDRE 21D
JERICO'S BEAUTY 122B

ANCHOR "T" METRO 4E
ANCHOR "T" LEGEND 7H
ANCHOR "T" HELGA 10Y
Dam: CA-T669344 SANDFLECK REESE FF 6R
BALTIMORE
RAJ MS BALTIMORE 51G
JERICO'S DOROTHY JANE 1D

| EPDs | |
|------|------|
| CE | 3.1 |
| BW | 3.0 |
| WW | 33.7 |
| YW | 56.3 |
| MW | 33.7 |
| Milk | 16.8 |
| MCE | 0.3 |

Birth wt. 85lbs

SFS 6U is a heifer calf that takes a back seat to no one. She is out of Reese a full sister to Gagnons Legends Charm. She will be a calving ease wonder with Molson and Legend in her background. Buyer is to receive one straw of choice, out of my tank.

CONSIGNED BY:

Sandstone Fleckvieh Simmentals - Don Jenkins
Charlottetown, PEI 902 629-1249

Open Female - Fullblood



5 Windy Knoll MS JAHARI 29U

applied

BEP 29U

Polled

12 February 2008

OVERAL BIRNER
BHR DOORN G629E
WISP-WILL PETAL
Sire: CA-559299 SHAWACRES JAHARI 50L
GREAT GUNS MOSES 50D
MISS SHAWACRES HEIDI 1H
RHY FAYE 13F

HERMANUS
HARTWATER
NACHTIGAL
Dam: CA-568287 MCC GLITTER GAL 97L
MFL DIAMOND RED 30D
MSDD&EGLITTERINGDIAMOND14G
MRLN PETRA

| EPDs | |
|------|------|
| CE | -4.8 |
| BW | 5.3 |
| WW | 46.5 |
| YW | 71.8 |
| MW | 29.3 |
| Milk | 6.1 |
| MCE | -1.7 |

Birth wt. 90lbs

A full fleckvieh polled heifer with a dam that has a little different breeding.

CONSIGNED BY:

Windy Knoll Farm - Bruce & Shelley Parsons
Kingston, NS 902 765-8446

Open Female - Fullblood



6 TABU ROCKET GIRL 30U

applied

TABU 30U

Horned

31 January 2008

Sire: CA-S533920 IROC ROCKET 57K
ANCHOR "T" METRO 4E
ANCHOR "T" LEGEND 7H
ANCHOR "T" HELGA 10Y
JB DOCTOR DUKE 442D
FGAF PRINCESS DUKE 552H
WELDEHAVEN POL ENFORCE 9E
KLONDIKE GOLD RUSH 418B
ANCHOR "T" RUSTY 59G
ANCHOR "T" HELGA 10Y
Dam: CA-G617477 TABU MISS RUSTY 10P
HVB POLLED EXCEL 31E
MISS POLLED EXCEL 19L
TABU MISS ZAMUTWO 6H

EPDs

| | |
|------|------|
| CE | 0.1 |
| BW | 2.9 |
| WW | 46.1 |
| YW | 78.6 |
| MW | 42.3 |
| Milk | 19.3 |
| MCE | -1.2 |

Birth wt. N/A lbs

A solid polled Rocket daughter.

CONSIGNED BY:

Cowassaget Brook Farms - Fraser McCallum
Tabusintac, NB **506 - 779 - 4497**

Open Female - Fullblood



7/8 Timberwood Complete 5U

691860

TW 5U

Horned

30 January 2008

METRO
ANCHOR "T" METRO 4E
GISELA
Sire: CA-611250 DREAMLAND METAO
BEL WESTERN UNION 2ND
MEEKABODE LONI 4L
HVB LORELEI 18F

ELDANDI 907H
DOUBLE BAR D BUSTER 801L
MRLN BARBL
Dam: CA-P616403 FGAF BRANCH 111P
BAR NONE SHAREHOLDER
BRANCH K MISS SHAREHOLDER
FAWA COUNTRY LASS 202C

EPDs

| | |
|------|------|
| CE | 0.9 |
| BW | 4.9 |
| WW | 42.2 |
| YW | 68.1 |
| MW | 33.5 |
| Milk | 12.4 |
| MCE | -2.4 |

Birth wt. N/A lbs

This fullblood, 3/4 fleckvieh heifer calf has a lot of natural thickness, soundness and disposition going back to a very strong cow family. We bought her dam in the 2005 Gagnon sale, a polled 3/4 fleckvieh Buster daughter. Her sire is our own herd bull, a Metro son who produces excellent females with strong framework.

This heifer has the genetics and back ground to make a great addition to anyone's herd.

CONSIGNED BY:

Timberwood Simmentals - Jacob & Lacey Fisher
Amherst, NS 902 661-0766

Open Female - Full Fleckvieh
 8 TABU TAYLOR SWIFT 24U

applied TABU 24U Polled 13 January 2008

Sire: CA-PT638986 FGAF ZEGNA 230R
 GRINALTA'S GRIDIRON 403J
 DFM MARCUS 14M
 DFM KATHLEEN 41K
 JB DOCTOR DUKE 442D
 FGAF GRACE 701K
 RAJ MS BALTIMORE 51G
 BEL C&B WESTERN 2ND
 ANCHOR "T" VISION 37G
 ANCHOR "T" EMMY 5B
 Dam: CA-613362 DREAMLAND SILK FF3N
 ANCHOR D BUCCANEER
 BROCK MISS KAJUN STYLE
 ANCHOR D LADY STYLE 30H

| | |
|-------------------|------|
| EPDs | |
| CE | -0.7 |
| BW | 3.7 |
| WW | 41.2 |
| YW | 66.8 |
| MW | 37.6 |
| Milk | 17 |
| MCE | -2.9 |
| Birth wt. N/A lbs | |

We are very impressed with the Zegna calves and she is polled.

CONSIGNED BY:

Cowassaget Brook Farms - Fraser McCallum
Tabusintac, NB 506 - 779 - 4497

Open Female - Red Purebred
 9 TABU TESS 22U

applied TABU 22U Polled 12 January 2008

Sire: CA-PG601342 SAS RED DAWG L213
 RAINBLACK BOLDSTOCK 142F
 SAS BLACK DIAMOND
 BOZ Z257
 G&L BLACKFOOT 716D
 SAS ROSEMARY
 SAS SWEETHEART
 ZAMUTO
 ARNOLD'S ZAMUTWO D9
 JACK PINE LILA 92A
 Dam: CA-G508729 TABU MISS ZAMUTWO 6H
 MFL BOSS MAN 5A
 TABU TESS 4E
 TABU LADY ORCHID 15C

| | |
|-------------------|------|
| EPDs | |
| CE | -2.8 |
| BW | 2 |
| WW | 31.8 |
| YW | 52.3 |
| MW | 25.6 |
| Milk | 9.6 |
| MCE | -0.1 |
| Birth wt. N/A lbs | |

A fancy polled Red Dawg daughter out of our best purebred COW.

CONSIGNED BY:

Cowassaget Brook Farms - Fraser McCallum
Tabusintac, NB 506 - 779 - 4497

Open Female - Red Purebred



10 Frey Lawny MISS LEWIS 16U

PG692249

HDPG 16U

Polled

13 January 2008

Sire: CA-PG624424 LFE MR LEWIS 448P
LFE MR LEWIS 821J
LFE RED ENTICER 364M
LFE SHALIMAR 132J
PVF FIFTH AVENUE 761G
LFE LADY DI 134K
BAR 5 LADY DI 286D
KJLI THE ROCK 1L
LFE AMBER 27H
Dam: CA-PTG692236 FREY LAWNY RACHEL
MFL UNIVERSE 28U
FREYLAWNY JULIE 7J
FREY LAWNY GINNY 9G

| EPDs | |
|------|------|
| CE | -4.4 |
| BW | 5.4 |
| WW | 38.7 |
| YW | 62.7 |
| MW | 20.0 |
| Milk | 0.7 |
| MCE | -1.7 |

Birth wt. 100 lbs

Frey Lawny Miss Lewis is a multi-generational red, deep sided, long bodied calf that has brood cow written all over her. She is out of LFE Mr. Lewis 448P, a Red Enticer son we purchased from Lewis Farms and who has given us two outstanding calf crops to date. Her dam, Frey Lawny Reba 16R was the result of a flush of our cornerstone cow, Frey Lawny Julie, to BBS Zima. Julie gave us her last calf this past year after producing many show winners, including the Supreme Champion Animal at the NS Provincial Ex in 2008. Her genetics are thus evident in our herd but are quickly running out. We are pleased to offer some of her genetics as exemplified in Miss Lewis and advise that this may be the last female we sell that traces back to Julie. Don't miss out on this double red, double polled female that will pay off for years to come.

CONSIGNED BY:

Frey Lawny Farms - Harold Godfrey & Son
Meadow Bank, PEI 902 566-3613

Open Female - Red Purebred



11 JoDreen Unith 13U

689666

IDJ 13U

Polled

11 January 2008

Sire: CA-PG651506 JODREEN ROCK
KJLI THE ROCK 1L
LFE MR LEWIS 466P
LFE SIGNAL 4J
JODREEN ANCHOR K
JODREEN MATTY 22M
JODREEN MISS PATIENCE 3F

Dam: CA-P616078 JODREEN PERDITA
GOLDEN-SIX LANCELOT
JODREEN LANCELOT
SCOTIA ELITE 112E
MYALTA PARAGON 1J
MBC SEVEN
TRYON HARRIET

| EPDs | |
|------|------|
| CE | -0.2 |
| BW | 4.5 |
| WW | 39.5 |
| YW | 64.7 |
| MW | 28.0 |
| Milk | 8.3 |
| MCE | 1.4 |

Birth wt. 97 lbs

13U is a well put together calf out of a good 3 year old.

Polled ~ Red ~ Good!

CONSIGNED BY:

Jo-Dreen Farm - JS Steeves

Stoney Creek, NB

506 387-7047

Open Female - Fullblood



12 Windy Knoll U MAY 8U

691242

BEP 8U

Horned

8 January 2008

KYKSO HADAU
KYKSO HAPED
KYKSO PEDODI
Sire: CA-T621436 BHR DRACO SA 628N
VETVEE MASSIEF EMBRIO 3
AI-AI RINA
SALERIKA RETA
ANDERLAND MATIAS-POENA
BAR 5 P SA EXPERT 826M
TOVERBERG ERIKA
Dam: CA-655362 WINDY KNOLL SOPHIA 25S
BAR 5 SA BENZ 415L
WINDY KNOLL PHEONIX 12P
BAR 5 LADY DI 615J

| EPDs | |
|------|------|
| CE | -2.3 |
| BW | 5.2 |
| WW | 44.3 |
| YW | 67.4 |
| MW | 33.8 |
| Milk | 11.6 |
| MCE | -2.6 |

Birth wt. N/A lbs

A thick Draco heifer that has lots of South African blood in her. She is out of a 2 year old Expert heifer that has done a good job with her first calf.

CONSIGNED BY:

Windy Knoll Farm - Bruce & Shelley Parsons
Kingston, NS 902 765-8446

Open Female- Full Fleckvieh



13

W#indy Knoll Ursula 47T

applied

BEP 47T

Polled

22 December 2007

Sire: CA-P637758 WKF ROMEO 23P
IPU BRONSON 19K
VIRGINIA'S MANIA 960M
DFM JUNI 960J
EMPEROR
MCC RUBY RED 36L
HVB WESTERN ROSE 26D

Dam: CA-541325 TRYON RAMONA
BOLD
BASALT
MORANDA
BALTIMORE
JACK PINE BARBI 47F
GREAT GUNS MITZI 11X

| EPDs | |
|------|------|
| CE | -5.5 |
| BW | 4.3 |
| WW | 36.5 |
| YW | 61.6 |
| MW | 28.8 |
| Milk | 10.6 |
| MCE | -3.8 |

Birth wt. 90 lbs

Ursula is a full fleckvieh polled heifer that has been an eye catcher from the start. Thick and deep, two big goggles, and a good disposition. She is out of Roblee's Bold cow that we flushed to the Romeo bull.

CONSIGNED BY:

Windy Knoll Farm - Bruce & Shelley Parsons
Kingston, NS 902 765-8446

Open Female - Red Purebred



14 Hidden H **ADCON**

applied GUB 710T Horned 17 December 2007

Sire: CA-SG583299 DUSTY ROSE CONQUEST 251M
NLC 64Y TOMCAT
PELTONS POWERCAT 344G
COTTONWOOD ENHANCED 803D
THE RANGE BOSS
CDY RED FANTASY 72E
LFE MISS LEWIS 133B
Dam: CA-G669841 HIDDEN-H ADVANTAGE
GREAT GUNS MOSES 50D
MACL MOSEL FF98N
TRYON ABBEY
SCOTIA EBENEZER 218E
HIDDEN-H EDITH
HIDDEN-H EDNA

| EPDs | |
|------|------|
| CE | -1.1 |
| BW | 1.3 |
| WW | 29.8 |
| YW | 49.6 |
| MW | 17.2 |
| Milk | 2.3 |
| MCE | 4.0 |

Birth wt. N/A lbs

A real vigorous calf from day one. The kind of calf we like to produce. This calfs grandmother was used in 4-H and is still here.

CONSIGNED BY:

Hidden Hollow Farm - Peter Gaunce

New Scotland, NB

506-383-4829

Open Female - Fullblood



15 Tryon TINA 27T

691053

FHC 27T

Horned

21 October 2007

Sire: CA-264714 ZAMUTO
ZAMUR ZARTER
ERNA
PLUTO
SANDRA SELMA
BAR NONE MAINSTREAM
TRYON MAINFRAME
R.H. PATRICIA
Dam: CA-571981 TRYON BELLE
GENTEC TRENDSETTER
NORMALEA BEE
NORMALEA BONNIE

| | |
|------|------|
| EPDs | |
| CE | -6.0 |
| BW | 6.1 |
| WW | 36.8 |
| YW | 56.7 |
| MW | 33.6 |
| Milk | 15.2 |
| MCE | 1.1 |

Birth wt. 80 lbs

This 3/4 Fleck heifer has a super dam and being by Zamuto she should really improve someones program. She is an easy keeper and very well mannered.

CONSIGNED BY:

Tryon Simmentals - Harry & Frank Robblee
Crapaud, PEI 902-658-2300

Open Female - S A Full Fleckvieh



16

Bar 5 SA EVA 321T

691173

CO 321T

Horned

28 August 2007

SIMLEE GOLDMAR
LATCO GOLD II
HOMAN DIRIGENT-POP
Sire: CA-T630200 BAR 5 SA GONG 459P
VETVEE MASSIEF EMBRIO 3
ELDANDI MINKA
SALERIKA MIA 82
JAHDAL INGO 86
JAHDAL IBBIE
JAHDAL ELBIE 86
Dam: CA-T622052 BAR 5 SA ECHO 838N
SALERIKA EVAN
TOVERBERG ELSA
TOVERBERG EMMA

| EPDs | |
|------|------|
| CE | -2.4 |
| BW | 5.5 |
| WW | 40.5 |
| YW | 62.6 |
| MW | 37.1 |
| Milk | 16.8 |
| MCE | -1.0 |

Birth wt. 94 lbs

321T has a great pedigree behind her. This doubled goggled heifer has a good disposition and lots of length. Sired by Gong 459P, he is a bull that constantly produces great calves with strong carcass traits, lots of marbling and yearling growth. All of his calves are well pigmented. 838N is a cow that produces good calves every year

CONSIGNED BY:

Bar 5 Stock Farms - Ron Nolan
Markdale, ON 519-986-1330

Bred Female - Red Purebred



19 JAT Tootsie **19T**

671736

JAT 19T

Polled

30 March 2007

NLC 64Y TOMCAT
PELTONS POWERCAT 344G
COTTONWOOD ENHANCED 803D
Sire: CA-PTG622104 HRC FIRE POWER 42N
ER RED DASH 649D
FHRS MS RED PERFECTION 4G
ABC MS PERFECTION 500F
SRS FORTUNE 500
PVF RED SUNSET 800H
TNT MISS TRISHA F6
Dam: CA-PG599267 JAT NATALIE 9N
BAR 5 HERO 244J
JAT LORI-ANN 7L
JAT ANGELINA 1H

| | |
|------|------|
| EPDs | |
| CE | 2.5 |
| BW | 3.2 |
| WW | 35.9 |
| YW | 61.5 |
| MW | 18.7 |
| Milk | 0.8 |
| MCE | 2.1 |

Birth wt. 110lbs

JAT Tootsie 19T is a younger yearling heifer. She is solid red in colour. She was bred to Bar 5 SA Stride.

Service Sire: Bar 5 SA Stride Reg. # T623089

Service Date: April 09, 2008

CONSIGNED BY:

Robertson Bros Simmentals - Earl Robertson
Pictou, NS 902-485-6236

Bred Female- Red Purebred



18 Harmony-Ridge Kelly 11T

671254

HHX 11T

Polled

8 March 2007

PPSR COAL BLACK 65F
LRS RED REALITY 33J
LRS MS PREFD STOCK 715G
Sire: CA-PG634148 HARMONY RIDGE NOIL 1R
ER RED DECK 639D
HARMONY-RIDGE MISS GOLDY
SPRINGCREEK GOLDY 9X
RED CADILLAC ZU95
BBS ZIMA D55
MISS PELTZ N55
Dam: CA-PG555976 HARMONYRIDGE MINDY 7L
ER RED DECK 639D
HARMONY-RIDGE MS TANYA
SPRINGCREEK TANYA 81B

| | |
|------|------|
| EPDs | |
| CE | -0.8 |
| BW | 5.1 |
| WW | 43.3 |
| YW | 74.1 |
| MW | 15.9 |
| Milk | -5.8 |
| MCE | -3.6 |

Birth wt. 85lbs

Kelly 11T is a blaze faced red heifer and will be bred to Harmony Ridge Joker 1S before sale day. She is sired by a home bred son of LRS Red Reality 33J and out of a "Zima" female. These sires go deep in red Simmental breeding. Look at her EPD's with 43.3 lbs for weaning weight and 74.1 lbs for yearling weight.

CONSIGNED BY:

Harmony Ridge Farm - Howard Pyne
Truro, NS

902 895-7469

Bred Female - Red Purebred



19 MACLRWF **VERNA** 234T

690382

MACL 234T

Polled

4 February 2007

Sire: CA-BPG634743 MELVERN BEEF 44R
LRS PREFERRED STOCK 370C
SRS J914 PREFERRED BEEF
SRS G733 GLIMMER
CET UELI BEST 22S
MELVERN MS BEST 18E
MELVERN DANIELLE 19Z
DAM: CA-652181 MACL LITTLE ERICA FF165R
GREAT GUNS BRUNO 21X
LITTLE GUNS ERIC
GREAT GUNS LEAH 23D
PURPLEHILL FRONTRUNNER
PURPLE HILL CAJEON QUEEN
PURPLE HILL QUEEN BELL

| | |
|------|------|
| EPDs | |
| CE | 3.4 |
| BW | 4.2 |
| WW | 40.7 |
| YW | 62.2 |
| MW | 30.9 |
| Milk | 10.6 |
| MCE | 0.8 |

Birth wt: 80lbs
Weaning wt: 670lbs
Yearling wt: 800lbs

This Red White Face heifer is out of a Full Fleckvieh heifer and sired by a black bull from Melvern Simmentals. The sire, Melvern Beef 44R, was the high selling bull at Nappan in 2005 and runs deep in Melvern breeding program. The dam, MACL Little Erica FF165R, is a solid producing young cow from the Purple Hill program in Ontario. She has just the right mix of Fleckvieh and Purebred breeding in her pedigree to make her an excellent prospect. She is a bit younger than some of the other bred heifers but has the potential to develop into an momma cow. She was exposed to MACL Triage 231T from late April - May 31, 2008. Triage is a fullblood yearling sired by Double Bar D Rudy 800L and MACL 04E Leeza 166R (Bar 5 SA Evan 437L X SH Romulus F53R). Confirmed bred to this exposure

Service Sire: MACL Triage 231T
Reg. # 678484
Exposure Date: Late April - May 31, 2008

CONSIGNED BY:

MacLeod Simmental Genetics - Bill MacLeod
Fredericton, NB **506-459-7066**

Bred Female - Red Purebred



20 MELVERN MS RED LABEL

690708

RDO 149T

Polled

31 January 2007

NICHOLS BLK DESTINY G151
CNS DREAM ON L186
CNS SHEEZA DREAM K107W
Sire: CA-PG634702 REMINGTON RED LABEL HR
BS MR ARAPAHOE 811A
HS REFLECTIONS J34
HF/GFI RUBY RED 33E

3C WALLY C240 BLK
LCHMN BODYBUILDER 7303F
LSF MOMENTO D8
Dam: CA-PG664193 MELVERN MS BUILDER 81R
CET UELI BEST 22S
MELVERN MS BEST 67D
MELVERN DANIELLE 19Z

| EPDs | |
|------|------|
| CE | -0.7 |
| BW | 4.8 |
| WW | 37.3 |
| YW | 59.9 |
| MW | 24.5 |
| Milk | 5.9 |
| MCE | 4.6 |

Birth wt. N/A lbs

A moderate framed, deep bodied Red Label daughter. She is very stylish and correct in her make up. Her dam is one of those good bodybuilder daughters that you can't have enough of. Bred early to the new ABS sire WS Beef Maker R13.

Service Sire: WS BEEF MAKER R13 Reg.# 673793

CONSIGNED BY:

Melvorn Simmentals - Bill & Richard Armstrong
Kingston, NS 902-765-4504

Bred Female - Red Purebred



21^{MACL} Red Zinnia 228T

690381

MACL 228T

Polled

21 January 2007

EMMONS BLACK HERCULES
3C WALLY C240 BLK
3C CROCUS 9278 BL
Sire: CA-PG502869 LCHMN BODYBUILDER 7303F
LEACHMAN RED BALDY 438W
LSF MOMENTO D8
LBR B-248
RED CADILLAC ZU95
BBS ZIMA D55
MISS PELTZ N55
Dam: CA-PG614708 MACL F166 ZIMORA RD90N
NLC 64Y TOMCAT
NLC F166 FENORA
NLC X92 XAHLIA

| | |
|------|------|
| EPDs | |
| CE | -3.6 |
| BW | 3.7 |
| WW | 37.5 |
| YW | 64.3 |
| MW | 29.7 |
| Milk | 10.9 |
| MCE | -1.6 |

Wearing wt: 715lbs
Yearling wt: 900 lbs

This solid red, polled heifer's pedigree reads like Who's Who for red-factor genetics; Tomcat, Zima and Bodybuilder. Each of these sires have had a very lasting effect on red factor Simmental programs throughout North America. Zinnia's sire, LCHMN Bodybuilder 7303F, is often referred to as the "Cow Maker" because of the many productive females he has produced. Zinnia's grand-dam, NLC F166 Fenora was bred by Nelson Bros., an extremely well-known breeding establishment in Montana, and was purchased by way of a Leachman Cattle Co. sale in 2001. (Everyone knows of the influence that the Leachman program has had on the Simmental breed.) Since that time F166 has been a very productive female, producing daughters and a herdsires for Ontario and our herd. She has produced another calf this spring, at 12 years of age. Her daughter, MACL Zimora 90N, has followed in her mothers footsteps as an excellent producer. Zinnia 228T's pedigree has been solid red and polled for several generations thereby guaranteeing some predictability in her breeding. She was exposed to MACL Triage 231T from April - May 31, 2008. Triage is a fullblood yearling sired by Double Bar D Rudy 800L and MACL 04E Leeza 166R (Bar 5 SA Evan 437L X SH Romulus F53R). Confirmed bred to this exposure. This should produce an excellent mating, by adding some Fleckvieh characteristics back into the mix.

Service Sire: MACL Triage 231T Reg. # 678484

Exposure Date: April -May 31, 2008

CONSIGNED BY:

MacLeod Simmental Genetics - Bill MacLeod
Fredericton, NB 506-459-7066

Bred Female - Black Purebred



22 Harmony Ridge Nell 3T

671249

HHX 3T

Polled

15 January 2007

Sire: CA-BPG548918 SRS J914 PREFERRED BEEF
CIRCLE S LEACHMAN 600U
LRS PREFERRED STOCK 370C
LAS MISS PRINCESS 020Z
MR BEEF E141
SRS G733 GLIMMER
SRS Z-12

Dam: CA-BPG603733 FVFR MS BLK MOVES 3N
MV RED LIGHT 406
PCC NIGHT MOVES H10
PSF BERTHA 46D
ASR TABASCO D409
FVFR MOLLY 9H
FVFR MS NORTHERN LITE 24F

EPDs

| | |
|------|------|
| CE | -6.3 |
| BW | 1.3 |
| WW | 48.7 |
| YW | 93.3 |
| MW | 24.9 |
| Milk | 0.5 |
| MCE | 3.5 |

Birth wt. 75lbs

This black heifer has loads of pedigree behind her, sired by "Preferred Beef" and out of a "Night Moves" female. She was bred June 17, 2008 to Harmony Ridge Joker 1S.

Service Sire: Harmony Ridge Joker 1S Reg. # BPG654710
Service Date: June 17, 2008

CONSIGNED BY:

Harmony Ridge Farm - Howard Pyne
Truro, NS

902 895-7469

Bred Female - Purebred



23 Glarro Trish

G678683

GLR 16T

Horned

14 January 2007

SALERIKA EVAN
SALMON ARM EROS 4L
MET-ANDER-WOORDE ALPROSE
Sire: CA-638468 SALMON ARM ERIE 17P
KYKSO HAPED
SALMON ARM ERMA 6M
KYKSO ERBA

BEL-R MR BENJAMIN
DREAMLAND BENS TUFF "T"3H
BAR 5 MS RED HOT 284C
Dam: CA-G556667 DREAMLAND TUFF GIRL
O'DELL NAPOLEON 7B
O'DELL MISS LASS 3D
ODELL LONG LASS 1T

| EPDs | |
|------|------|
| CE | -4.1 |
| BW | 4.6 |
| WW | 35.3 |
| YW | 54.6 |
| MW | 30.4 |
| Milk | 12.8 |
| MCE | 0.9 |

Birth wt: 95lbs
Weaning wt: 738lbs

What about starting the year with a nice Sleepy Hollow Zorro calf. Happy New Year! Trish is another Salmon Arm Erie daughter. As I said this bull has done a great job for me and I expect Trish will be a good mama cow

Service Sire: Sleepy Hollow Zorro

Reg. # 200SM0101

Service Date: March 25, 2008

CONSIGNED BY:

Glarro Farm - Andre Van Agten

Petitcodiac, NB

506-756-2550

Bred Female- Fullblood



24 Glarro Talia

678684

GLR 17T

Horned

14 January 2007

SALERIKA EVAN
SALMON ARM EROS 4L
MET-ANDER-WOORDE ALPROSE
Sire: CA-638468 SALMON ARM ERIE 17P
KYKSO HAPED
SALMON ARM ERMA 6M
KYKSO ERBA

PASTA
JACK PINE JOHANN 22E
ALMRAUSCH
Dam: CA-580943 JATA'S MISS LIBERTY 161L
BEL "R" ANTONIO
MISS JATA'S JADE 908J
OKT TARA 48T

| | |
|------|------|
| EPDs | |
| CE | -1.9 |
| BW | 4.6 |
| WW | 37.9 |
| YW | 53.5 |
| MW | 28.2 |
| Milk | 9.3 |
| MCE | -2.5 |

Birth wt: 102lbs
Weaning wt: 805lbs

Talia is also from SA Salmon Arm Erie. Her dam is a Jack Pine Johann daughter, a steady performer, lots of milk, always raising a good calf. Talia has a very good disposition and is easy to handle. She is bred for an early February calf.

Service Sire: Dreamland Philosopher FF

Reg. # 659832

Service Date: April 30, 2008

CONSIGNED BY:

Glarro Farm - Andre Van Agten

Petitcodiac, NB

506-756-2550

Bred Female - Red Purebred



25 Jo Dreen Timandra 21T

PG671617

IDJ 21T

Polled

12 January 2007

PPSR COAL BLACK 65F
LRS RED REALITY 33J
LRS MS PREFD STOCK 715G
Sire: CA-PG633307 FREY LAWNY RAINMAKER 4R
BBS ZIMA D55
FREY LAWNY MIA 2M
FREYLAWNY JULIE 7J

HCC FLAME
HCC MAX FACTOR
HCC DARK ANGEL
Dam: CA-PG553446 MELVERN MS MAX 47K
RIVERSIDE LAD 10A
MELVERN MS LAD 74C
MAGGIE 51Y

| | |
|------|------|
| EPDs | |
| CE | -0.6 |
| BW | 5.6 |
| WW | 42.4 |
| YW | 74.7 |
| MW | 23.2 |
| Milk | 2.0 |
| MCE | -0.9 |

Birth wt: 108lbs

21T is a heifer with a real future. Out of a Melvern cow 47K, that gives us our best calf each year. Bred to the old reliable Zima bull AI.

Service Sire: BBS ZIMA D55

Reg. # PTG355743

Service Date: April 7, 2008

Preg checked safe in calf

CONSIGNED BY:

Jo Dreen Farm - JS Steeves
Stoney Creek, NB

506 387-7047

Bred Female- Fullblood



26 Tryon TARA FF8T

673528

FHC 8T

Horned

9 January 2007

KYKSO HADAU
KYKSO HAPED
Sire: CA-T621436 BHR DRACO SA 628N
KYKSO PEDODI
VETVEE MASSIEF EMBRIO 3
AI-AI RINA
SALERIKA RETA
PRL HOUSTON 005H
IPU REVELATION 122M
Dam: CA-634773 MELVERN MS REVELATION 72R
DORA LEE FRANCESCA
GREAT GUNS BINZ 60H
MELVERN MS BINZ 145K
CASEYS HILDA 46X

| EPDs | |
|------|------|
| CE | -0.4 |
| BW | 7.6 |
| WW | 50.4 |
| YW | 76.5 |
| MW | 34.6 |
| Milk | 9.4 |
| MCE | -1.9 |

Birth wt: 95lbs

I sure hate to part with this one! She is a real sweetheart! She maintains plenty of thickness for today's beef industry and exhibits allot of breed character. She will give any heifer a run for their money! Tara 8T was bred on July 7th to Anchor "T" Paragon. This mating is guaranteed to produce an another outstanding full fleckvieh calf next spring that will be capable of adding value to any breeder's herd.

Service Sire: Anchor "T" Paragon 1X

Reg. # T172284

Service Date: July 7, 2008

CONSIGNED BY:

Branch K Farms - Keith & Lynne Kennedy
Bible Hill, NS

895-8399

Bred Female - Red Purebred



28 Harmony Ridge Dream Girl

PG671247

HHX 1T

Polled

2 January 2007

NICHOLS BLK DESTINY G151
CNS DREAM ON L186
CNS SHEEZA DREAM K107W
Sire: CA-PTG655896 SF WHAT A DREAM
MEYERS RED TOP
BB LITTLE RED RODEO
VAFS HEARTTHROB
BBS ZIMA D55
HARMONY RIDGE BLACK ZIMA
HARMONY-RIDGE MISS CANADA
Dam: CA-BPG634152 HARMONY RIDGE BLACKBEAUTY
RJY BLACK MARQUEE 9E
HARMONY-RIDGE GAIL 14L
HARMONYRIDGEMISSBLUEPRINT

| | |
|------|------|
| EPDs | |
| CE | 3.1 |
| BW | 5.0 |
| WW | 40.9 |
| YW | 67.1 |
| MW | 23.8 |
| Milk | 3.3 |
| MCE | 3.4 |

Birth wt: 80 lbs

This quiet red purebred heifer has been shown as a 4-H project and placed third when shown as a calf at the EBI showcase in 2007. She was bred on April 9, 2008 to Harmony Ridge Joker 1S and has been confirmed safe for an early January calf. Joker is a home bred black bull sired by PVF-BF 26 Black Joker out of a daughter of BBS Zima D55.

Service Sire: Harmony Ridge Joker 1S

Reg. # BPG654710

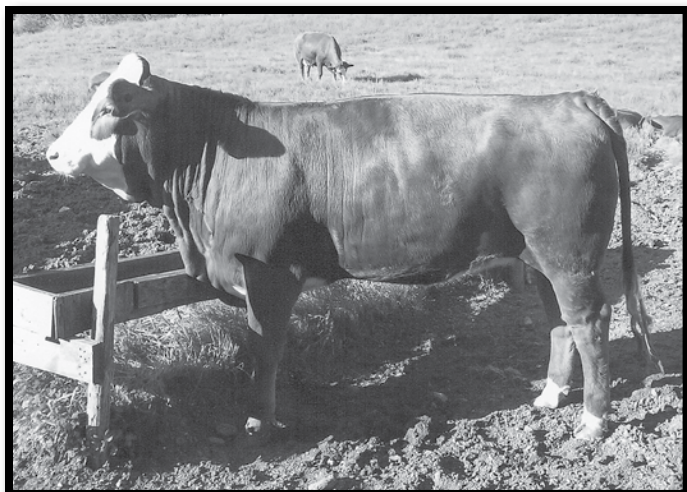
Service Date: April 9, 2008

CONSIGNED BY:

Harmony Ridge Simmentals - Howard Pyne
Truro, NS

902 895-7469

Bred Female- Fullblood



29 JAT TAYLOR 2T

671733

JAT 2T

Horned

1 January 2007

KYKSO HADAU
KYKSO HAPED
Sire: CA-T621436 BHR DRACO SA 628N
KYKSO PEDODI
VETVEE MASSIEF EMBRIO 3
AI-AI RINA
SALERIKA RETA
BAR 5 MR HADAU 400G
BAR 5 HERO 244J
Dam: CA-557138 JAT LUCY 3L
BAR 5 PRECIOUS 598Z
DAY TWELVE OCLOCK HIGH
JAT JESSICA 3G
J AT MISS ROYAL

| EPDs | |
|------|------|
| CE | -3.7 |
| BW | 4.2 |
| WW | 46.3 |
| YW | 75.9 |
| MW | 36.3 |
| Milk | 13.2 |
| MCE | -1.1 |

Birth wt: 88 lbs
Weaning wt: 790lbs
Yearling wt: 1335lbs

JAT Taylor 2T is a beautiful dark red, goggled eyed heifer. She was bred to Bar 5 SA Stride on March 30th and was preg. Checked safe in calf to this date.

Service Sire: Bar 5 SA Stride
Reg. # T623089
Service Date: March 30, 2008

CONSIGNED BY:

Robertson Bros. Simmentals - Earl Robertson
Pictou, NS

902 485-6236

Bred Female - Full Fleckerieh



30 Melvern Ms Draco 17T
690705 RDO 17T Horned 1 January 2007

KYKSO HADAU
KYKSO HAPED
Sire: CA-T621436 BHR DRACO SA 628N
KYKSO PEDODI
VETVEE MASSIEF EMBRIO 3
AI-AI RINA
SALERIKA RETA
ZAMUR
ZAMUTO
Dam: CA-T368416 RICHMOND MISS ZUMOTO 38F
SANDRA
MONET
BAR NONE LOIS
BAR NONE LISA

| | |
|------|------|
| EPDs | |
| CE | -4.2 |
| BW | 4.9 |
| WW | 37.8 |
| YW | 54.5 |
| MW | 28.7 |
| Milk | 9.8 |
| MCE | -2.9 |

Birth wt: 90 lbs
Weaning wt: 730lbs
Yearling wt: 955lbs

A dark red, goggle eyed, full fleck heifer sired by BHR Draco. Her 12 year old dam is a very sound and fertile cow we purchased at the McDougall dispersal in Alberta. We have six other daughters in our herd so we can part with one. She is bred to the homozygous full fleck bull Exodus for an early polled calf.

Service Sire: Exodus
Reg. # 619930
Service Date: April 2, 2008

CONSIGNED BY:

Melvorn Simmentals - Bill & Richard Armstrong
Kingston, NS 902-765-6620

Bred Female - Full Fleckvieh



31 Melvern Ms Revelation 23T

690706

RDO 23T

Horned

1 January 2007

ROGANT
PRL HOUSTON 005H
MS PRL NITE-ANCHOR 109B
Sire: CA-T587083 IPU REVELATION 122M
ANTONIUS
DORA LEE FRANCHESCA
DORA LEE FRALINE

SIR ARNOLD 809G
BAR NONE SHAREHOLDER
BAR NONE LAIKA
Dam: CA-553421 MELVERN MS SHAREHOLDER 3K
CASEYS DIPLOMAT 17D
RIVERBEND CATHERINE 22H
CASEYS MANDY 227D

| | |
|------|------|
| EPDs | |
| CE | -1.3 |
| BW | 2.5 |
| WW | 35.8 |
| YW | 60.3 |
| MW | 32.3 |
| Milk | 14.4 |
| MCE | 0.6 |

Birth wt: 93lbs
Weaning wt: 780lbs
Yearling wt: 1025lbs

An easy fleshing, thick, full fleck heifer that has lots of growth. Her dam is also the grand dam of our high seller last year. Bred for a January calf, to PVM Best Boy 1210S, the bull we purchased at last years sale.

Service Sire: PWM SA Best Boy 1210S

Reg. # 669368

Service Date: April 18, 2008

CONSIGNED BY:

Melvorn Simmentals - Bill & Richard Armstrong
Kingston, NS

902-765-6620

Bred Female - Full Fleckvieh



32 Sandfleck Tippy

681421

SFS 1T

Horned

1 January 2007

Sire: CA-216954 KLONDIKE ARNIE GNM 250Z
BIGFOOT
SRF MR BIGFOOT S138
BGR SIEGFRIED'S JANET
BOLD
SIM-ROC GWEN
SIM-ROC GOLDA
Dam: CA-614003 SANDFLECK NATTIE
SIR ARNOLD 809G
ANCHOR "T" ARNOLD 11X
MISS NEFF LOR-A-LEE
MFL MEISTER 36Y
SANDSTONE CHLOE
TRYON IVY

| | |
|------|------|
| EPDs | |
| CE | -2.5 |
| BW | 2.1 |
| WW | 37.1 |
| YW | 63.8 |
| MW | 30.3 |
| Milk | 11.8 |
| MCE | 0.4 |

Birth wt: 75lbs
Weaning wt: 730lbs
Yearling wt: 810lbs

SFS 1T Tippy is a very quiet heifer by Klondike Arnie who will become a very honest cow that will calve easy and milk well. She will deliver calving ease bulls and beautiful heifer calves. Bred to Smithbilt Molson who calves easy and puts pounds on his progeny. Bull calf could be the next heifer master.

Service Sire: Smithbilt Molson 21M
Reg. # 581559

CONSIGNED BY:

Sandstone Fleckvieh Simmentals - ADon Jenkins
Charlottetown, PEI 902 629-1249

Bred Female - Full Fleckvieh



33 Sandfleck Samantha

681420

SFS 20S

Horned

23 December 2006

BEL C&B WESTERN 2ND
KLONDIKE GOLD RUSH 418B
SIM-ROC GWEN
Sire: CA-T394922 ANCHOR "T" RUSTY 59G
WESTDRUMS ANDREW
ANCHOR "T" HELGA 10Y
ANCHOR "T" FRIEDA 2T

SIEGFRIED
CAMUS FRONTIER
CAMUS VIRGINIA
Dam: CA-T593207 SANDFLECK MILLI
BALIST
TRYON MANDY
ROLLING HILLS DANA

| | |
|------|------|
| EPDs | |
| CE | -1.9 |
| BW | 5.1 |
| WW | 48.5 |
| YW | 83.5 |
| MW | 39.2 |
| Milk | 14.9 |
| MCE | -1.4 |

Birth wt: 85lbs
Weaning wt: 850lbs
Yearling wt: 910lbs

20S Samantha is a high performance heifer who gained right with the bulls last year. She is a deep sided and long bodied heifer which will continue to perform well. She is bred to Smithbilt Molson. Look for a home run with her calf.

Service Sire: Smithbilt Molson 21M
Reg. # 581559

CONSIGNED BY:

Sandstone Fleckvieh Simmentals - ADon Jenkins
Charlottetown, PEI **902 629-1249**

Bred Female - Full Fleckvieh



34 Glarro Taressa

678679

GLR 3S

Horned

8 December 2006

Sire: CA-638468 SALMON ARM EROS 4L
SALERIKA EVAN
MET-ANDER-WOORDE ALPROSE
KYKSO HAPED
SALMON ARM ERMA 6M
KYKSO ERBA
Dam: CA-633987 GLARRO REBECCA
GLARRO NEVIN
EISENHERZ
RICHMOND MISS MOSES 42J
GLARRO LEON 4L
GLARRO NANCY
MRLN LORELAI

| | |
|------|------|
| EPDs | |
| CE | -4.9 |
| BW | 3.4 |
| WW | 31.8 |
| YW | 49.8 |
| MW | 27.1 |
| Milk | 11.2 |
| MCE | -3.9 |

Birth wt: 88lbs
Weaning wt: 706lbs

This heifer is from the full south African fleckvieh bull that I bought at the Fleckvieh Fest Sale in Red Deer. This bull has been doing an outstanding job for me. A real herd improver. Taressa is an early heifer bred to another South African bull, Springfield Optimal 52P the son of Bar 5 SA Optimal 447L who was syndicated in 2003 in Brazil for \$500,000 USD. She is due by year end.

Service Sire: Springfield Optimal 52P

Reg. # T640021

Service Date: March 16, 2008

CONSIGNED BY:

Glarro Farm - Andre Van Agten

Petitcodiac, NB

506-756-2550

Bred Female - Full Fleckvieh



35 Twin Anchor 7 RIVIERA 5R

641306

GUY 5R

Horned

4 January 2005

ANTONIUS
GIDSCO APPOLLO 3F
MFL BRENDA 65B
Sire: CA-605215 MVS GUNNER 1N
MRLN RODEN
MTV CINDI 3K
BEL WENDY 02H

CANADIAN NEFF
Dam: CA-538855 BLUCON JAMI
BLUCON NEFF'S GOLDMINER
KLONDIKE FLOWER 1C
BLUCON JAYTON
BLUCON KARMEN
JACK PINE ALICA 68C

| EPDs | |
|------|------|
| CE | 4.3 |
| BW | 1.4 |
| WW | 22.9 |
| YW | 37.3 |
| MW | 27.9 |
| Milk | 16.5 |
| MCE | 1.6 |

Birth wt: 86lbs
Weaning wt: 820lbs

This stylish 3 year old full fleckvieh represents the best of western breeding, having come to the maritimes from the Fleck Select Sale as a calf in 2005. She exhibits excellent length, maternal ability and udder quality. She is dark red in color, with just enough chrome to make her eye appealing and walks very smoothly on an excellent set of feet and legs. She has a very quiet disposition and enjoy some attention. In the 2005 sale catalogue, her breeders, Guy and Christina Kelley, Sundre, AB, stated "We are excited to offer this heifer as a showcase of our new herdsire, MVS Gunner 1N. We are really impressed with the length and style of his offspring. 5R has continued in her dam's as an excellent producer. 5R was bred to Eagle Ridge Lobo 11L, on March 25 to an early January 2009 calf. Lobo is a dark red, with very little white markings on the face. As a herd sire he is admired for his depth of body, muscle and his athletic walk. He has been used very successfully on heifers, at Virginia and Eagle Ridge Ranches in Alberta. 5R has been confirmed bred to her AI service.

Service Sire: Eagle Ridge Lobo 11R
Reg. # 563181

Service Date: March 16, 2008

Exposure Sire: MACL Hemi 192S

Exposure Date: April 2 - April 30

Exposure Sire: Spring Creek Tank 69S

Exposure Date: After April 30, 2008



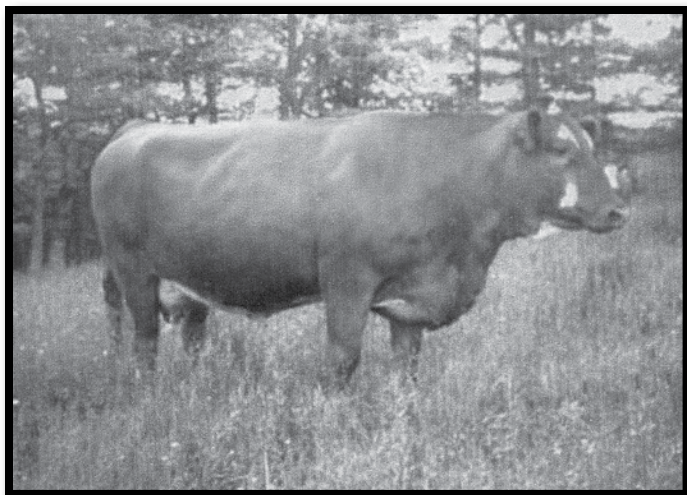
Eagle Ridge Lobo 11R

CONSIGNED BY:

MacLeod Simmental Genetics - Bill MacLeod
Fredericton, NB

506-459-7066

Bred Female - Full Fleckvieh



36 SLS 10N

601114

TGT 10N

Horned

16 January 2003

ELCH
ELDORADO
MUSTER
Sire: CA-T519707 KLONDIKE FIRECRACKER420J
SPRUCEBURN AMTRAC 093A
KLONDIKE CONNIE
KLONDIKE EMMA
L.J.B. JADE
G3 MR JADE 4F
CASEYS FREDA 117D
Dam: CA-511323 TGT 70J
PAULI
MISS TIMBERLAND 130F
MRLN ERIKA

| EPDs | |
|------|------|
| CE | 4.0 |
| BW | 0.9 |
| WW | 27.5 |
| YW | 43.6 |
| MW | 25.6 |
| Milk | 11.9 |
| MCE | -1.8 |

Birth wt: 85lbs
Weaning wt: 640lbs
Yearling wt: 1010lbs

For our first sale offering we wanted to consign a special female. 10N is a deep bodied, moderate framed female and is very heavily pigmented which is a good trait to have in the fleckvieh business. Bred early to the new homo polled fleckvieh bull "Double Bar D Maddox" should lead to a very marketable calf.

Service Sire: Double Bar D Maddox 40S

Reg. # 665526

Service Date: March 22, 2008

Exposure Sire: LPP Red Drive 13R PG639098

Exposure Date:

CONSIGNED BY:

Lobster Point Properties - Forbes Rafuse

Bedford, NS

902-221-2296

Bred Female - Red Purebred



37 Harmony Ridge **Susie 9S**

PG654714 HHX 9S Polled 1 April 2006

RED CADILLAC ZU95
BBS ZIMA D55
MISS PELTZ N55
Sire: CA-PG616978 HARMONY RIDGE TYLER 2P
ER RED DECK 639D
HARMONY-RIDGE MS TANYA
SPRINGCREEK TANYA 81B
MV RED LIGHT 406
STF JALAPENO
ER MISS REDLINE 42B
Dam: CA-PG577730 HARMONY RIDGE MORI
FF FAST FORWARD 40Y
HARMONYRIDGEMORNINGSTAR6K
FALHAVEN MISS LADY

| EPDs | |
|------|------|
| CE | 1.1 |
| BW | 4.5 |
| WW | 38.3 |
| YW | 61.5 |
| MW | 17.5 |
| Milk | -1.6 |
| MCE | -3.0 |

Birth wt: 70lbs

Susie 9S carries a very good udder and comes from a very strong fullblood cow family. She is sired by STF Jalapeno. She combines some of the best of fullblood and red factor genetics available to the industry making her just right for modern breeding programs. She has been exposed to Harmony Ridge Joker 1S. She has a March '08 black heifer calf at her side.

Exposure Sire: Harmony Ridge Joker 1S

Reg. # BPG654710

37a Harmony Ridge **Willow**

BPG690260 HHX 16U Polled 19 March 2008

PVF-BF BF26 BLACK JOKER
Sire: CA-BPG654710 HARMONY-RIDGE JOKER 1S
HARMONYRIDGE MINDY 7L

Harmony Ridge Willow 16U is a black March 2008 heifer calf out of Harmony Ridge Susie 9S and sired by Harmony Ridge Joker 1S.

CONSIGNED BY:

Harmony Ridge Farm - Howard Pyne

Truro, NS

902 895-7469

Bred Female- Red Purebred



Lot 38



Lot 38a

38 Melvern Ms Moses 49S

652958

RDO 49S

Horned

2 January 2006

SIM-ROC C&B WESTERN

BEL C&B WESTERN 2ND

ADRIAN

Sire: CA-T338409 GREAT GUNS MOSES 50D

MONET

MISS KNIGHT 155S

MISS KNIGHT 107N

BALTIMORE

JACK PINE BALI 114F

GREAT GUNS MITZI 11X

Dam: CA-595521 MELVERN MS BALI 41N

BAR NONE SHAREHOLDER

MELVERN MS SHAREHOLDER 3K

RIVERBEND CATHERINE 22H

EPDs

| | |
|------|------|
| CE | -2.9 |
| BW | 4.5 |
| WW | 42.2 |
| YW | 68.3 |
| MW | 31.5 |
| Milk | 10.4 |
| MCE | -2.6 |

Birth wt: 87lbs

Ms Moses 49S is a very fertile female, having a January 1, 2008, heifer calf and has bred back for a January 1, 2009 calving. If I were building a herd, this 2 year old would not be in this sale, but she is sure to be on of the sale highlights. Or, at least be a high seller, if breeders recognizes her breeding value. She is a full fleck with a full fleck heifer calf sired by IPU Revolution 122M at her side

Service Sire: PWM SA Best Boy 1210S on March 24, 2008

38a Branch K Unice 1U

applied

RLKS 1U

Horned

1 January 2008

PRL HOUSTON 005H

Sire: CA-T587083 IPU REVELATION 122M

DORA LEE FRANCESCA

1U is carrying one of the best cow family pedigrees with lots of proven results. Just go down to Bill & Richard Armstrong's and ask to see some of her relatives. Unice 1 U will be hanging red ribbons in her new owner's home before long.

CONSIGNED BY:

Branch K Farms - Keith & Lynne Kennedy
Bible Hill, NS

895-8349

Bred Female - Black Purebred



39 Harmony Ridge **Haley 9P**

BPG618650 HHX 9P Polled 29 March 2004

PTL TRENDSETTER B96
RJV BLACK MARQUEE 9E
ER MISS JB 13A
Sire: CA-BPG577728 HARMONYRIDGEBLACKCADILLIC
BBS ZIMA D55
HARMONYRIDGEMISSKELSEY 3K
SPRINGCREEK GOLDY 9X
SRS FORTUNE 500
PVF RED SUNSET 800H
TNT MISS TRISHA F6
Dam: CA-PG579865 HIDDEN-H RED LADY
BAR 5 SIR MVP 394F
HIDDEN-H MISS LEBINO
JO-DREEN MISS LEWIS 8B

| EPDs | |
|------|------|
| CE | 7.8 |
| BW | 3.1 |
| WW | 39.3 |
| YW | 61.3 |
| MW | 19.5 |
| Milk | -0.1 |
| MCE | -1.4 |

Birth wt: 75lbs

Haley 9P is a young cow with a very good udder. this year she is raising a very good black blaze faced bull calf. She is a young cow with some very productive years left. She was rebred to joker on April 20th for a January calf.

Service Sire: Harmony Ridge Joker 1S on April 20, 2008

Reg. # BPG654710

39a Harmony Ridge **No Joke**

BPG690267 HHX 14U Polled 6 March 2008

PVF-BF BF26 BLACK JOKER
Sire: CA-BPG654710 HARMONY-RIDGE JOKER 1S
HARMONYRIDGE MINDY 7L

No Joke 14U is a blaze faced bull calf. He has a predominately red body with black pigment around the ears, eyes, switch and navel with black hair showing through on the body. He therefore is registered as a black bull.

CONSIGNED BY:

Harmony Ridge Farm - Howard Pyne

Truro, NS

902 895-7469

Bred Female - Black Purebred



40 Harmony Ridge **Macey**

BPG601966 HHX 10N Polled 30 July 2003

RED CADILLAC ZU95

BBS ZIMA D55

MISS PELTZ N55

Sire: CA-PG577725 HARMONY RIDGE ZIMA

ER RED DECK 639D

HARMONY-RIDGE MS TANYA

SPRINGCREEK TANYA 81B

PTL TRENDSETTER B96

RJY BLACK MARQUEE 9E

ER MISS JB 13A

Dam: CA-BPG555977 HARMONY-RIDGE GAIL 14L

BLUE PRINT MCM 63X

HARMONYRIDGEMISSBLUEPRINT

HARMONYRIDGEMISSCANADA 2D

EPDs

| | |
|------|------|
| CE | 1.9 |
| BW | 6.5 |
| WW | 42.0 |
| YW | 65.0 |
| MW | 18.3 |
| Milk | -2.7 |
| MCE | -1.3 |

Birth wt: 80lbs

Macey 10N is a mature black female with lots of impressive breeding behind her. She is sired by Zima son that goes back to another productive Spring Creek cow family. On the maternal side "Macey" traces back to a Creed Ankony cow family. Lots of production and breeding here! Look for this cow to add value to any breeding program.

Service Sire: Harmony Ridge Joker 1S on June 28, 2008

Reg. # BPG654710

40a Harmony Ridge **Alex**

applied Polled 24 May 2008

PVF-BF BF26 BLACK JOKER

Sire: CA-BPG654710 HARMONY-RIDGE JOKER 1S

HARMONYRIDGE MINDY 7L

Harmony Ridge Alex is sired by Hamony Ridge Joker 1S. He is black in color.

CONSIGNED BY:

Harmony Ridge Farm - Howard Pyne

Truro, NS

902 895-7469

Bred Female- Fullblood



41 Harmony Ridge Morning Star 6K

P527654 HHX 6K Polled 23 January 2000

SUPERCHARGER
SUPER MAC X
MISS SHAWEST 2R
Sire: CA-PT263683 FF FAST FORWARD 40Y
SIGNAL
MS SIGNAL 1R
MS BEAVER CREEK 128L

BAR 5 MR. ANKONY
G5 AMERICAN EXPRESS
BAR 15 MISS EXTRA 2G
Dam: CA-167819 FALHAVEN MISS LADY
FORMULA 10
AJAS LADY SUZETTE
JL FLORA 95R

| EPDs | |
|------|------|
| CE | 0.4 |
| BW | 6.5 |
| WW | 41.9 |
| YW | 65.4 |
| MW | 22.5 |
| Milk | 1.5 |
| MCE | 2.4 |

Birth wt: 80lbs
Weaning wt: 920lbs
Yearling wt: 1150lbs

Mornig Star 6K is a fullblood cow with a perfect udder and has always calved unassisted. She was bred April 1, 2008, to Harmony Ridge Joker 1S for an early January '09 calf. Look for lots of production and longevity in this cow family.

Service Sire: Harmony Ridge Joker 1S on April 1, 2008

Reg. # BPG654710

41a Harmony Ridge Tuck

PG690262 HHX 1U Polled 3 January 2008

LRS RED REALITY 33J
Sire: CA-PG634148 HARMONY RIDGE NOIL 1R
HARMONY-RIDGE MISS GOLDY

Tuck 1U is a solid red bull calf with a moderate birth weight and excellent set of EPDs. He is sired by a Red Reality son that is out of a Red Deck cow originating for Spring Creek, SK. The Goldy cow family has been a very productive line with great longevity that has been passed on to successive generations.

CONSIGNED BY:

Harmony Ridge Farm - Howard Pyne

Truro, NS

902 895-7469

TERMS & CONDITIONS

TERMS - The terms of the sale are cash or cheque payable at par at sale location unless satisfactory credit arrangements have been made prior to the sale. The right of property shall not pass until after settlement is made. Maritime Simmental Association reserves the right to require a certified cheque as settlement before releasing any sale cattle.

Should the

purchaser fail to settle for his purchase Bouchard Livestock Ltd. reserve full power to resell the animal to the best advantage either publicly or privately, without further notice. Any loss arising from such resale together with keep and all other expenses shall be payable by the defaulter. All settlements must be made with the clerks of the sale before any cattle will be released. The owners, Bouchard Livestock Ltd. and sales staff have the right to refuse bids from anyone who has a previous record of default in payment and or who has not made prior credit arrangements, prior to the sale with the owners and or Sales Management.

BID - Every animal consigned to the sale must be sold by auction. No by-bidding will be permitted. Each animal will be sold to the highest bidder.

DISPUTES - In cases of disputes, bidding will be reopened between the parties involved. If no further bid is made the buyer will be the person from whom the auctioneer accepted the last bid. The auctioneer's decision in such matters will be final.

PURCHASER'S RISK - Each animal becomes the risk of the purchaser as soon as sold **ANNOUNCEMENTS** from the auction block will take precedence over printed matter in the catalogue. Buyers are therefore cautioned to pay attention to any such announcements.

CERTIFICATE OF REGISTRY - The proper Registration or Recordation paper, as the case may be, will be duly transferred and furnished to the buyer for each animal after settlement has been made.

SHIPPING - Assistance will be given in making shipment after the sale but no risk is assumed by Sales Management or Seller. Expenses incurred are the responsibility of the purchaser. Purchasers are requested to furnish shipping instructions when making settlement.

GUARANTEE - All animals will carry standard breeding guarantee as specified by the Canadian Simmental Association. At no time shall the seller's liability exceed the purchased price of the animal.

EXCEPTION TO GUARANTEE - In cases where the animal is subjected to any hormonal or surgical reproduction techniques after the sale, the guarantee shall be null and void. In the cases of bulls, they are guaranteed to breed naturally according to Canadian Simmental Association Guarantee but no guarantee is given that semen from any bull will freeze.

HEALTH - All animals will have passed the required tests as determined by Agriculture Canada at sale location. It is the buyer's responsibility to determine health requirements for importing any animal into his province or state. Bouchard Livestock Ltd. assumes no responsibility for the health status of any animal in the sale.

ACCIDENTS - Although every precaution will be taken to protect the safety and comfort of buyers, neither the Sales Management, auctioneer, or Association assumes any responsibility in this matter and disclaims any liability legal or otherwise in the event of accident or loss of property.

RIGHTS AND OBLIGATIONS - The above terms and conditions of the sale shall constitute a contract between the buyer and the seller and be equally binding to both. Resale of animals following purchase in this sale shall constitute a separate transaction and the rights and obligations of the two parties connected thereto are not covered by the terms and conditions of this sale.

MARITIME SIMMENTAL ASSOCIATION IS AN AGENT ONLY - It is clearly understood that Maritime Simmental Association, acts only as agent between buyer and seller and is not in any way responsible for any failure by either party to live up to his or her obligations. Maritime Simmental Ass. does not assume any financial obligations to collect or enforce collection of moneys by either parties, and in exceptional case, any legal action will be between buyer and seller. Maritime Simmental Ass. has no ownership of the facility and assumes no responsibility for the operation of said facility.

To view the catalogue online
www.indianrivercattlecompany.com

Return Address

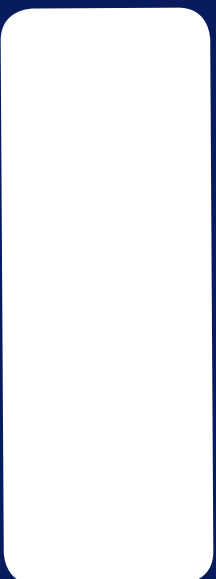
Maritime Simmental Association

Bill MacLeod

63 Talisman Cres.,

Fredericton, NB

E3C 1L9



CATALOGUE DESIGNED BY

