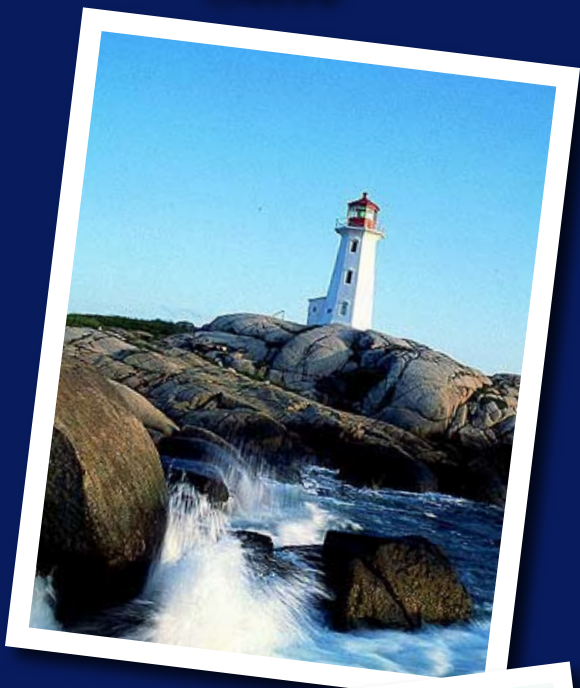


*3rd Annual
Salt Water
Classic Elite
Sale*



August 28, 2009

7:00pm

Truro, NS

Welcome

Welcome to the Maritime Simmental Association's Third Annual Salt Water Classic Simmental Sale. Breeders from the three Maritime Provinces, Nova Scotia, New Brunswick and Prince Edward Island, are pleased to showcase their cattle and share some top quality cattle with breeders from other parts of the country.

We are again pleased to welcome the participation of Lobster Point Properties with an offering of a semen package from the great breeding bull, Wheatland Bull 468P "Hummer". This package will add another dimension and interest to the sale offering.

Our sale offering represent a cross section of the genetic variation of cattle available to the Simmental industry. There are South African Full Fleckvieh, Canadian Full Fleckvieh and Fullblood from European ancestry as well as Canadian Red and Black cattle. There are cattle represented by a great selection of open females, bred yearlings, as well as one proven mature cow. There will be something to suit every breeders's breeding needs. We urge you to select and buy with confidence.

After last years very successful Salt Water Classic Sale, which saw bidders and buyers from a number of provinces, we have decide to follow the same format as last year. The sale will be held in conjunction with the Maritime Young Canadian Simmental Classic event and the Nova Scotia Provincial Livestock Open Show. All Simmental enthusiasts and their families are invited to attend and to stay afterward for the sale. We will be please to see you there!

Although we would prefer that you were able to attend the sale in person, we do understand that not everyone can get away. However, if you are interested in any of the sale entries, but cannot attend the sale in person, feel free to contact any of the sale consignors and they will be happy to represent your interests in confidence during the sale. Come early, stay late and enjoy some wonderful Maritimes hospitality.

Sale day phones:

Bill MacLeod (506) 447-0353

Ralph Taylor (902) 899-8388,





SIMMENTAL

Schedule of the Weekend Events

Friday, August 28, 10:00am
Maritime YCS Simmental Classic
Information
Jennie Palmer
(902) 288-1631

Friday, August 28, 7:00pm
Salt Water Classic
Information
Bill MacLeod (506) 459-7066
Sale day (506) 447-0358

Saturday, August 29, 9:00am
NS Provincial Livestock Show
Information
Ralph Taylor (902) 895-2117
Sale Day (902) 899-8388



Consignors:

Big Ker Simmentals, Kerwin & Karen Delong
Kingston, NS (902) 765-2645

Frey Lawny Farms, Don Godfrey & Family
Cornwall, PEI (902) 566-3613

Glarro Farm, Andre and Geraline Van Agten
Petitcodiac, NB (506) 756-2250

Greenbank Cattle Co., Robert Holmes
North Wiltshire, PEI (902) 675-2032

Hidden Hollow Farm, Peter & Marlene Gaunce,
New Scotland, NB (506) 383-4829

JoDreen Farm, Joe & Doreen Steeves,
Stoney Creek, NB, (506) 387-7047

Lobster Point Properties, John Risley
Forbes Rafuse, (Farm Manager)
Bedford, NS, (902) 221-2296

MacLeod Simmental Genetics, Bill MacLeod,
Fredericton, NB, (506) 459-7066

Meadowvale Simmentals, James & Brian MacKenzie
Truro, NS (902) 893-2530

Melvorn Simmentals, Bill & Richard Armstrong,
Kingston, NS, (902) 765-4504

T & N Simmentals, Ralph Taylor
Truro, NS (902) 895-2117



Polled & Homo Black Bull - Semen



5 straws of semen on offer!

1

Wheatland BULL 468P "Hummer"

622096

LER 468P

Polled

2 March 2004

Sire: CA-BPG538095 HC POWER DRIVE 88H
 BURNS BULL X339U
 WLE POWER STROKE
 NICHOLS JOLIETTE C75
 IRISH BLACK KNIGHT
 KAPPES LADY IRISH F88
 KAPPES LADY DAKOTA D64

Dam: CA-PG542693 WHEATLAND LADY 902J
 KS BLACK CLOUD A27
 ER RED DECK 639D
 ER MISS MAX 57Y
 ER BIG SKY 545B
 WHEATLAND LADY 702G
 MISS WHEATLAND 519E

EPDs	
CE	13.4
BW	-1.7
WW	29.7
YW	59.2
MW	27.7
Milk	12.8
MCE	3.9

Birth wt. 80lbs
 Weaning wt - 880lbs

"Hummer", 468P, is one of the most complete and competitive bulls in the history of the Simmental Breed. Hummer has an undisputed show career as 2004 Canadian Western Junior Bull Calf Champion and Reserve Grand Champion Bull, 2006 World Congress Grand Champion Bull, 2006 Agribition Grand Champion and 2006 Royal Bank Challenge Supreme Champion Bull and has now begun his legacy as a great breeding bull. Hummer has proven himself to be a calving ease sire following a three-year calving record. His calves are extremely vigorous at birth and possess very desirable phenotype. His maternal strengths come to the top with his daughters having projected 14.8 maternal milk EPD. He is mothered by Wheatland Lady 902J who has mothered as many herd bulls as any cow in the Simmental breed. This past sale season a 902J son topped the Wheatland Sale at \$44,000. At a later date 468P semen will be available in the Maritimes on the open market; however, in the meantime his semen is exclusive to Lobster Point Properties. This will be your opportunity to be the first breeders in the Maritimes to use this record setting sire. Hummer is owned jointly by Wheatland Cattle Co., Bienfait, SK and Lobster Point Properties, NS

CONSIGNED BY:

Lobster Point Properties - John Risley & Forbes Rafuse
 Bedford, NS 902 275-4713

Open Female - Red Purebred



2 JO-DREEN WINTA

706603

IDJ 23W

Polled

24 January 2009

Sire: CA-PG655975 WAYDAMAR RED SANFORD 79S
DS RED LITE 29J
RIVERLANE ACRES MARCO
MARYWOOD MS GOOD RP101K
CHARLES PRIDE
TBSF HEATHER 17H
TWIN BUTTE DIONE 10D
ER BIG SKY 545B
FVFR REDNECK 14J
FVFR MISS HAYLEY 4G
Dam: CA-PG580798 MOUNTAIN RD MISSEY 4M
ASR TABASCO D409
FVFR DELLY 8H
FVFR DOLLY 5C

EPDs	
CE	10.4
BW	0.5
WW	27
YW	46.2
MW	20
Milk	6.5
MCE	1.4

Birth wt. 85 lbs

23W is a thick made heifer out of a Redneck female. A calf very well balanced and ready to work in anyone's herd.

CONSIGNED BY:

**JO-DREEN FARM (JS STEEVES),
STONEY CREEK, NB**

Open Female - Red Purebred



3 JO-DREEN WILDA

706605

IDJ 20W

Polled

16 January 2009

DS RED LITE 29J
RIVERLANE ACRES MARCO
MARYWOOD MS GOOD RP101K
Sire: CA-PG655975 WAYDAMAR RED SANFORD 79S
CHARLES PRIDE
TBSF HEATHER 17H
TWIN BUTTE DIONE 10D

PELTONS POWERCAT 344G
DUSTY ROSE CONQUEST 251M
CDY RED FANTASY 72E
Dam: CA-PG635197 JODREEN CONQUEST 9R
GOLDEN-SIX LANCELOT
JODREEN MILA M1
JODREEN SECRET J

EPDs	
CE	1.4
BW	3.5
WW	38.4
YW	63.5
MW	22.9
Milk	3.7
MCE	0.9

Birth wt. 90 lbs

This is a solid red heifer that will make an excellent herd replacement. The Dusty Rise females are excellent mothers and do an exceptional job raising a calf.

CONSIGNED BY:

**JO-DREEN FARM (JS STEEVES),
STONEY CREEK, NB**

Open Female - Full Fleckvieh Fullblood



4 MEADOWVALE WILMA

709131

JMMS 1W

Horned

15 January 2009

KYKSO HAPED
BAR 5 SA HERO 823M
RU-DEV PEPPi
Sire: CA-669368 PWM SA BEST BOY 1210S
DAN-JACO BENZ 78
BAR 5 SA ELLA 435N
TOVERBERG ELSA
KYKSO HAPED
BHR DRACO SA 628N
AI-AI RINA
Dam: CA-673528 TRYON TARA FF8T
IPU REVELATION 122M
MELVERN MS REVELATION 72R
MELVERN MS BINZ 145K

EPDs	
CE	-3.6
BW	5.7
WW	42.9
YW	66.6
MW	35.2
Milk	13.8
MCE	-3.1

Birth wt. 87 lbs

This is an early January heifer calf from a first calf heifer that is an superior female. This heifer calf is a three quarter South African, she is sired by a full South African and her dam is also sired by a full South African. Her superior genetics and excellent conformation makes her very difficult to part with.

CONSIGNED BY:

**BRIAN MACKENZIE,
TRORO, MS**

Open Female - Red Purebred



5 HIDDEN H WILDFLOWER

708434

GUB 413W

Polled

2 January 2009

LRS PREFERRED STOCK 370C

BH TRACKER 998J

699F

Sire: CA-PTG634923 THSF FREEDOM 300N

SAC JET TOP 2D

SAFN MISS ZING 02H

SAC MISS ZING 88E

RJY BLACK MARQUEE 9E

HARMONYRIDGEBLACKCADILLIC

HARMONYRIDGEMISSKELSEY 3K

Dam: CA-G669836 HIDDEN-H MARIGOLD

RAJ MR HERKULES 32D

KINGHURST MS LADY 9K

MELVERN MS FOREMAN 51G

EPDs

CE 4.4

BW 2.8

WW 38.8

YW 71.1

MW 27.0

Milk 7.6

MCE 2.4

Birth wt: 95 lbs

Our sale entry this year is the pick of the 2009 heifer calf crop. This heifer is a dream to work with. She is a polled red heifer that is in our show string. We will be retaining show rights until after the Royal Winter fair this year as she is being shown by a 4-H member.

CONSIGNED BY:

**PETER & MARLENE GAONCE,
NEW SCOTLAND, NB**

Open Female - Fullblood



6

GLARRO WANITA 10W

709370

GLR 10W

horned

12 January 2009

KYKSO HANO
BAR 5 SA OPTIMAL 447L
SALERIKA ZINKA 5DE
Sire: CA-T640021 SPRINGFIELD SA OPTIMAL52P
ERICO PRIMAL
BAR 5 SA MS SISKA 430M
AI-AI SISKA

MFL FOREMAN 36Z
T&N MR. FOREMAN
BAR 5 MS ROYALTY 954A
Dam: CA-403392 FALHAVEN MS LANDMARK 23G
BAR 5 LANDMARK 604Z
BAR 5 MS LANDMARK 668C
BAR 5 MS GENNY 341A

EPDs	
CE	-1.2
BW	4.2
WW	40.1
YW	66.2
MW	29.3
Milk	9.3
MCE	-0.8

Birth wt. 93 lbs

This January heifer is an early calf from Falhaven MS Landmark. Falhaven has always shown good fertility, good milking abilities and a very good disposition. I expect that her heifer will be at least as good. Wanita's sire, Optimal 52P is the son of Bar 5 SA Optimal 447L who was syndicated in 2003 in Brazil for \$500,000 USD. Her weight on July 2nd was 560 lbs

CONSIGNED BY:

**GLARRO FARM,
PETTICODIAC, NB**

Open Female - Red Purebred



7 FREY LAWNY WINONA RYDER

applied HDPG 6W Polled 7 January 2009

HC POWER DRIVE 88H
WFL FULLY CHARGED 201M
LFE DAKOTA 89K
Sire: CA-PG641141 LFE RS LEWIS 380R
LFE MR LEWIS 327K
LFE SIGNAL 684L
LFE SIGNAL 643F
ER BLACK MACK 568Y
ER BIG SKY 545B
JKE 38W
Dam: CA-PTG604051 GENTEC NAOMI
BAR 5 CROWN ROYAL 419W
GENTEC JEWEL
GENTEC WINNIE

EPDs	
CE	5.9
BW	0.4
WW	26.1
YW	54
MW	20.4
Milk	3.8
MCE	4.2

"Frey Lawny Winona Ryder is an extremely stylish, smooth made, naturally muscled heifer that takes the style and moderate frame from her dam, Gentec Naomi, a granddaughter of the legendary Gentec Winnie and combines it with the EPD horsepower, stoutness, and muscle of her sire, LFE RS Lewis 380R, a WFL Fully Charged son we purchased from Lewis Farms. Take a look at the pedigree of this calf and it reads like a who's who of both Nationally known and marketed bulls like Fully Charged, Signal, Big Sky and Crown Royal and local stars on the dam side like Jewell and Winnie. This heifer is halter broken with a quiet disposition and is destined to be a 4-H project, a standout two year old and a solid producer for many years to come."

CONSIGNED BY:

**HAROLD GODFREY & SON,
MEADOW BANK, PE**

Open Female - Black Purebred



GREENBACK WONDER WOMAN 3W

Applied 3W Polled 6 January 2009

NICHOLS BLK DESTINY G151
CNS DREAM ON L186
CNS SHEEZA DREAM K107W
Sire: CA-BPTG687147 SVF/NJC BUILT RIGHT N48
BLACK IRISH KANSAS
NJC EBONY ANTOINETTE
NJC BETSY ROSS
NICHOLS BLK DESTINY D12
KINGHURST MR BLACK 2M
ROLLING JN KINETA 21K
Dam: CA-BPG665692 KINGSWICK BLACK SASSY
DAY TWELVE OCLOCK HIGH
SPRUCE BROOK ELECTRA RED
GENTEC ELECTRA BEST

EPDs	
CE	8.6
BW	1.3
WW	35
YW	58.2
MW	24.6
Milk	5.9
MCE	2.6

Wonder Woman is a fancy black baldie heifer that is loaded with style for that extra eye appeal. Out of the Built Right bull (a Dream On son) and a good milking 3 year old, this heifer should develop into a moderate framed, good producing female.

CONSIGNED BY:

**GREENBACK CATTLE CO,
NORTH WILTSHIRE, PE**

Open Female - Red Purebred



9 JO-DREEN WILLA

706596

IDJ 12W

Polled

3 January 2009

DS RED LITE 29J
RIVERLANE ACRES MARCO
MARYWOOD MS GOOD RP101K
Sire: CA-PG655975 WAYDAMAR RED SANFORD 79S
CHARLES PRIDE
TBSF HEATHER 17H
TWIN BUTTE DIONE 10D
KLONDIKE ARNIE GNM 250Z
SPRINGCREEK DAKOTA 50D
RWU MISS ABBEY 18Y
Dam: CA-T620554 JODREEN PRECIOUS
G5 AMERICAN EXPRESS
FALHAVEN MISS LADY
AJAS LADY SUZETTE

EPDs	
CE	1.4
BW	3.7
WW	31.4
YW	59.2
MW	22.6
Milk	6.9
MCE	-0.1

Birth wt. 97 lbs

12W is a heifer right out of our keeper pen. She is very correctly put together and with lots of potential. Don't miss out on this one!

CONSIGNED BY:

**JO-DREEN FARM (JS STEEVES),
STONEY CREEK, NB**

Open Female - Black Purebred



10 BIG KER UP TOWN GIRL

708253

BKER 24U

Polled

10 September 2008

WLE POWER STROKE
PVF-CW RAPID FIRE 0195K
KAPPES LADY IRISH F88
Sire: CA-BPG635056 INDIAN RIVER RULER
JDJ NOVA 014J
INDIAN-RIVER MONA 203M
DEK POLLEDQUASAR'SLADY37A
NICHOLS BLK DESTINY D12
NICHOLS BLK LEGACY G151
NICHOLS DEBRA D81
Dam: CA-BPG635832 BIG KER VANESSA
WLE SHOWDOWN
BIG D CASHMERE
HIGH RIDGE CHANTILLY

EPDs	
CE	1.4
BW	3.7
WW	38.1
YW	64.9
MW	25.8
Milk	6.7
MCE	-0.1

Birth wt. 83 lbs

Up Town Girl is a September born heifer out of a 3 year old "Nichols Legacy" daughter that we raised, "Vanessa". She is sired by the Indian River bull "Ruler". Up Town girl will never be a frame 8 but she will be a great producing, thick, black female you could have in your herd. Her full brother is working in a purebred herd.

CONSIGNED BY:

**KERWIN & KAREN DELONG,
KINGSTON, NS**

Bred Yearling - Red Purebred



1 1 MACL RED SARAH PALIN 273U

708353

MACL 273U

Polled

8 February 2008

MSR KANSAS TANK 235M
SPRINGCREEK TANK 57P
SYS HONEY DEW L137
Sire: CA-STG650592 SPRINGCREEK RED TANK 69S
GW BLACK CREEK 289J
SPRINGCREEK BROOKE 5M
SPRINGCREEK REDROSE 29K
JACK PINE LETHAL WEAPON
WOODSONG CHANDLER 817G
WOODSONG COLETTE 17C
Dam: CA-530999 MACL CHANDLER SUZETTE 41K
BREEZY BRAE ZEUSON
BUZC MS SIMONE 10C
KINGFIELD AMY

EPDs	
CE	1.4
BW	3.3
WW	41.4
YW	65.8
MW	27.0
Milk	6.3
MCE	3.9

Birth wt. 87 lbs
Weaning wt. 675 lbs
Yearling wt. 1030 lbs

MACL 273U is an outstanding red heifer by our senior herd sire, Springcreek Red Tank 69S, who is doing an outstanding job producing red and polled progeny. "Sarah" is included in the sale because she represents our complete breeding program being sired by Red Tank, our current herd sire, and out of a daughter of a former sire, Woodsong Chandler. And to top it off she is bred to our junior herdsire, Melvern Freedom 7U. On her dam's side she goes back to an early herd addition, BUCZ Ms Simone. There is consistency bred into this heifer. She was observed bred May 11 for a February calf and confirmed by a ultrasound this early service.

Bred to Melvern Freedom 7U on May 11/09.

CONSIGNED BY:

**MACLEOD SIMMENTAL GENETICS,
FREDERICTON, NB**

Bred Female - Black Purebred



1 2 MELVERN MS TANK 162U

708867

RDO 162U

Horned

4 February 2008

3C FULL FIGURES C288 BLK

MSR KANSAS TANK 235M

MSR 0053K OF 515E ARAP

Sire: CA-BSG642862 SPRINGCREEK TANK 169R

GW BLACK CREEK 289J

SPRINGCREEK BROOKE 68M

KAPES KARA K118

BEL C&B WESTERN 2ND

GREAT GUNS KARL 17C

MISS KNIGHT 155S

Dam: CA-574781 MELVERN KARLA 115M

BAR 5 MR BEST 281B

MELVERN STARLETTE 129G

MELVERN MS FARMER 3C

EPDs	
CE	-5.0
BW	6.2
WW	45
YW	71.2
MW	28.9
Milk	6.4
MCE	0.8

Birth wt. 97 lbs

Another super good, black blazed Spring Creek Tank 169R daughter. Her dam is a heavy milking Great Guns Karl daughter, who always brings in a top calf. Bred early to Sand Ranch for a black calf.

Bred to Sand Ranch (679812) on March 25/09.

CONSIGNED BY:

**MELVERN SIMMENTALS,
KINGSTON, NS**

Bred Yearling - Black Purebred



13 MELVERN MS TANK 131U

707883

RDO 131U

Polled

22 January 2008

3C FULL FIGURES C288 BLK

MSR KANSAS TANK 235M

MSR 0053K OF 515E ARAP

Sire: CA-BSG642862 SPRINGCREEK TANK 169R

GW BLACK CREEK 289J

SPRINGCREEK BROOKE 68M

KAPES KARA K118

GREAT GUNS BINZ 60H

MELVERN BINZ 71L

TRYON EVE

Dam: CA-G623671 MELVERN BINZ 136N

BAR 5 MR MILORD 1695F

MELVERN MS MILORD 97J

MELVERN MS BEST 28D

EPDs	
CE	-6.0
BW	6.0
WW	45.1
YW	67.5
MW	28.9
Milk	6.3
MCE	-0.3

Birth wt. 103 lbs
Weaning wt 840 lbs

A black blazed-faced heifer out of our Spring Creek Tank bull, who has produced excellent calves. She is thick, deep and has a great disposition. Bred early to the popular black bull, Sand Ranch Hand.

Bred to Sand Ranch Hand (679812) on April 4/09.

CONSIGNED BY:

**MELVERN SIMMENTALS,
KINGSTON, NS**

Bred Yearling - Full Fleckvieh Fullblood



14 MELVERN MS BALI 27U

708866

RDO 27U

Horned

2 January 2008

BALTIMORE
JACK PINE BALI 114F
GREAT GUNS MITZI 11X
Sire: CA-T674554 MELVERN BALI 195R
BHL WESTERN 36R
HVB WESTERN ROSE 26D
CET MS MONET 92S
BEL C&B WESTERN 2ND
GREAT GUNS MOSES 50D
MISS KNIGHT 155S
Dam: CA-T680371 MELVERN MS MOSES 191R
ZAMUTO
RICHMOND MISS ZUMOTO 38F
BAR NONE LOIS

EPDs	
CE	-0.1
BW	3.4
WW	35.5
YW	54.4
MW	28.2
Milk	10.4
MCE	-3.6

Birth wt. 100 lbs

A Thick , high growth 100% full Fleck heifer, sired by a transplant bull we rasied. She has some of the top cows in the breed in her pedigree. Bred early to TNT GUNNER N208.

Bred to TNT Gunner N208 on April 1/09.

CONSIGNED BY:

**MELVERN SIMMENTALS,
KINGSTON, NS**

Bred Yearling - Black Purebred



15 BIG KER UNIQUE

692050

BKER 12U

Polled

21 January 2008

WLE POWER STROKE

PVF-CW RAPID FIRE 0195K

KAPPES LADY IRISH F88

Sire: CA-BPG635056 INDIAN RIVER RULER

JDJ NOVA 014J

INDIAN-RIVER MONA 203M

DEK POLLEDQUASAR'SLADY37A

BOZ HACK N BLACK

BOZ BLACK KAT

BOZ CORETTA

Dam: CA-BPG534545 MF BLACK KAT'S KITTY

F NICHOLS BLACKADVANTAGE

SSC TEMPTATION

KC TEMPTED

EPDs

CE -3.6

BW 4.6

WW 39.3

YW 69

MW 27.3

Milk 7.6

MCE -1.6

Birth wt. 94 lbs

Unique is a heifer that has been a stand out since we started showing her in 4-H. She was Valerie's calf last year. Karen and I thought that Unique would make a great "coming out heifer". She will be the first Black Simmental female for us to sell. Her dam is one of the first black females that we imported from Maine, we have always kept her females to put back into the herd. Her sire is from the Indian River herd, we purchased him as a calf after a successful show season. His maternal sister was Reserve Grand Champion at the Royal Winter Fair as a calf. Unique was bred to our new herdsire LPP Titan on March 21/09 for an early January calf. Titan is sired by the Wheatland bull "Hummer" and out of a "Dream On" 2 year old that Lobster Point purchased from the Labatte herd. This heifer will have a different pedigree from any other black heifer in the Maritimes, buy her with confidence.

Bred to LLP Titan 8U (688230) on March 21/09.

CONSIGNED BY:

**KERWIN & KAREN DELONG,
KINGSTON, NS**

Bred Yearling - Full Fleckvieh Fullblood



16 BEN DEBBIE

691388

BEN 3U

Horned

5 January 2008

PRL HOUSTON 005H
IPU BRONSON 19K
DORA LEE FRANCESCA
Sire: CA-581572 VIRGINIA'S MANIA 960M
DFM EDWIN 51E
DFM JUNI 960J
DFM BARBIE'S IMAGE 437D
LAKI
DORA LEE JAKE
MRLN JOSETTE
Dam: CA-634692 BEN MANON JAKE 60R
ANCHOR "T" METRO 4E
BEN MACHA
FMD GRAFFITI

EPDs	
CE	3.6
BW	2.1
WW	24.0
YW	44.7
MW	22.3
Milk	10.2
MCE	-0.6

Birth wt. 91 lbs

This is a heifer I bought in the 25th Anniversary Sale of Ferme Gagnon Farm last fall. She is a powerful high performance heifer that was shown in Quebec in 2008. She is a fullblood heifer with a great pedigree like IPU Bronson 19K, Houston & Anchor T Metro. I intended to keep this heifer but due to low numbers she is in the sale. Bred early to the polled SKORS Big Mack bull who is available for viewing in the Big Ker show string.

Exposed to SKOR Big Mack 184T (684524) from March 27 to April 3/09.

CONSIGNED BY:

**T & N SIMMENTAL,
TRORO, MS**

Bred Yearling - Fullblood



17 MACL P'MASTER LOONIE 262U

708349

MACL 262U

Polled

1 January 2008

YANKEE JACKPOT
HARKAWAY ENFORCER 16Y
HKW POLLED BEAUTY
Sire: CA-P299385 BAR 5 PAYMASTER 1334D
CET EXTRA BEST 87K
BAR 5 BEST LADY 604Y
TCCL MS TRIPLICATOR
SALERIKA EVAN
BAR 5 SA EVAN 437L
AI-AI SISKA
Dam: CA-P652182 MACL 04E LEEZA 166R
SH ROMULUS F53R
MISS LINCOLN 04E
GOLD SIGNAL WIL 15T

EPDs	
CE	7.4
BW	2.7
WW	40.1
YW	70.3
MW	33.5
Milk	13.4
MCE	-0.1

Birth wt: 75 lbs
Weaning wt: 680 lbs
Yearling wt: 1015 lbs

MACL 262U is without a doubt one of the most complete females ever bred in our herd. She has been a standout and an eye catcher since her birth. She comes from one of the most consistent cow families in the herd. Her grand-dam, Miss Lincoln 04E, is a daughter of SH Romulus F53R, one of the most highly respected of the early Full Fleckvieh sires. Miss Lincoln has produced 4 daughters in our herd. The dam of 262U, MACL 04E Leeza 166R is a outstanding young cow and is the mirror-image of her mother. "Loonie" will be another carbon copy of this outstanding cow family. The dam is sired by Bar 5 SA Evan 437L, which introduces a touch of South African Fleckvieh genetics to the pedigree. "Loonie's" sire is the well-known Bar 5 Paymaster 1334D, a polled fullblood sire who saw heavy use in the Bar 5 herd. This heifer was bred AI on March 22 to the Fleckvieh sire Eagle-Ridge Lobo 11L on May 18 and confirmed by ultrasound to this service. This combination will produce another exceptional individual. Hope for a heifer calf next winter!

Bred AI to Eagle-Ridge Lobo 11L on March 22/09.

CONSIGNED BY:

**MACLEOD SIMMENTAL GENETICS,
FREDERICTON, NB**

Bred Yearling - Red Purebred



18 MELVERN MS REZULT 2U

707884

RDO 2U

Polled

1 January 2008

HERCULES 538P

BOZ REDCOAT

BOZ RED LADY

Sire: CA-PG634375 FR REZULT

GW STOP LIGHT 024F

MISS FR J922

MISS FR G722

GW-CPL RED ALERT

ER RED FRED 621D

ER MISS REDLINE 40B

Dam: CA-PG679978 MELVERN FREDA 42S

SAFE SIDAAR

MELVERN GERLU 124P

MELVERN MS BEST 66F

EPDs

CE 7.4

BW 1.2

WW 32

YW 51.6

MW 22.9

Milk 6.9

MCE 0.4

Birth wt. 91 lbs

Weaning wt 790 lbs

A deep dark red heifer out of FR Result. She is very correct and fancy in her build. Out of a heavy milking Red Fred cow. Bred for an early January calf to TNT Top gun, whose sons and daughters have been high sellers at numerous sales.

Bred to TNT Top Gun R244 (654937) on March 31/09.

CONSIGNED BY:

**MELVERN SIMMENTALS,
KINGSTON, NS**

Bred Female - Red Purebred



19 HARMONYRIDGE MANDY 5L

555975

HHX 5L

Polled

18 January 2001

C&B INCUMBENT 4131

RED CADILLAC ZU95

MISS PROTO U95

Sire: CA-PTG355743 BBS ZIMA D55

SIR ARNOLD L8125

MISS PELTZ N55

MISS BEAT J13

KS BLACK CLOUD A27

ER RED DECK 639D

ER MISS MAX 57Y

Dam: CA-PG402473 HARMONY-RIDGE MISS GOLDY

BDN COUNTRY GOLD 1R

SPRINGCREEK GOLDY 9X

MISS MTH 16K

EPDs

CE -2.6

BW 5.4

WW 46.3

YW 73.7

MW 23.6

Milk 0.4

MCE -3.1

Birth wt. 80 lbs

This dark red cow is probably the best looking cow in our pasture. Only because additional entries were needed for the sale have we considered to let her go! Mandy was rebred for a January 20, 2010 calf. She has a heifer calf at foot, which is very well put together, just like her mother. We will retain this heifer calf.

Bred to Jetstream Sambucca 13S

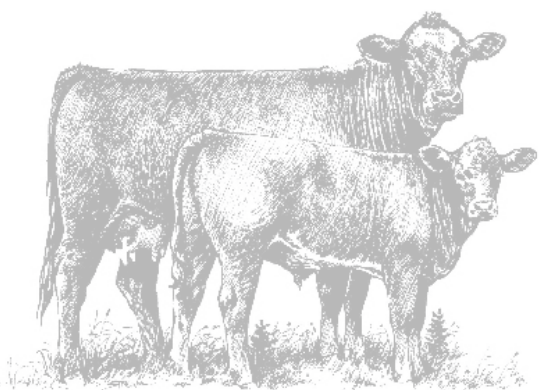
CONSIGNED BY:

**JO-DREEN FARM (J&S STEEVES),
STONEY CREEK, NB**

NOTES



NOTES



TERMS & CONDITIONS

TERMS - The terms of the sale are cash or cheque payable at par at sale location unless satisfactory credit arrangements have been made prior to the sale. The right of property shall not pass until after settlement is made. Maritime Simmental Association reserves the right to require a certified cheque as settlement before releasing any sale cattle.

Should the

purchaser fail to settle for his purchase, Maritime Simmental Association reserve full power to resell the animal to the best advantage either publicly or privately, without further notice. Any loss arising from such resale together with keep and all other expenses shall be payable by the defaulter. All settlements must be made with the clerks of the sale before any cattle will be released. The owners, Maritime Simmental Association and sales staff have the right to refuse bids from anyone who has a previous record of default in payment and or who has not made prior credit arrangements, prior to the sale with the owners and or Sales Management.

BID - Every animal consigned to the sale must be sold by auction. No by-bidding will be permitted. Each animal will be sold to the highest bidder.

DISPUTES - In cases of disputes, bidding will be reopened between the parties involved. If no further bid is made the buyer will be the person from whom the auctioneer accepted the last bid. The auctioneer's decision in such matters will be final.

PURCHASER'S RISK - Each animal becomes the risk of the purchaser as soon as sold **ANNOUNCEMENTS** from the auction block will take precedence over printed matter in the catalogue. Buyers are therefore cautioned to pay attention to any such announcements.

CERTIFICATE OF REGISTRY - The proper Registration or Recordation paper, as the case may be, will be duly transferred and furnished to the buyer for each animal after settlement has been made.

SHIPPING - Assistance will be given in making shipment after the sale but no risk is assumed by Sales Management or Seller. Expenses incurred are the responsibility of the purchaser. Purchasers are requested to furnish shipping instructions when making settlement.

GUARANTEE - All animals will carry standard breeding guarantee as specified by the Canadian Simmental Association. At no time shall the seller's liability exceed the purchased price of the animal.

EXCEPTION TO GUARANTEE - In cases where the animal is subjected to any hormonal or surgical reproduction techniques after the sale, the guarantee shall be null and void. In the cases of bulls, they are guaranteed to breed naturally according to Canadian Simmental Association Guarantee but no guarantee is given that semen from any bull will freeze.

HEALTH - All animals will have passed the required tests as determined by Agriculture Canada at sale location. It is the buyer's responsibility to determine health requirements for importing any animal into his province or state. Bouchard Livestock Ltd. assumes no responsibility for the health status of any animal in the sale.

ACCIDENTS - Although every precaution will be taken to protect the safety and comfort of buyers, neither the Sales Management, auctioneer, or Association assumes any responsibility in this matter and disclaims any liability legal or otherwise in the event of accident or loss of property.

RIGHTS AND OBLIGATIONS - The above terms and conditions of the sale shall constitute a contract between the buyer and the seller and be equally binding to both. Resale of animals following purchase in this sale shall constitute a separate transaction and the rights and obligations of the two parties connected thereto are not covered by the terms and conditions of this sale.

MARITIME SIMMENTAL ASSOCIATION IS AN AGENT ONLY - It is clearly understood that Maritime Simmental Association, acts only as agent between buyer and seller and is not in any way responsible for any failure by either party to live up to his or her obligations. Maritime Simmental Ass. does not assume any financial obligations to collect or enforce collection of moneys by either parties, and in exceptional case, any legal action will be between buyer and seller. Maritime Simmental Ass. has no ownership of the facility and assumes no responsibility for the operation of said facility.

To view the catalogue online
www.indianrivercattlecompany.com

Return Address

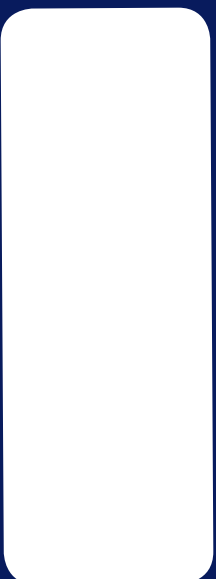
Maritime Simmental Association

Bill MacLeod

63 Talisman Cres.,

Fredericton, NB

E3C 1L9



CATALOGUE DESIGNED BY

