

Down East Hereford Sale



*Sept. 11, 2010
Bird's Hill Farm
Wilmot, NB*



Down East Hereford Sale

Sale Day Phones...

Dale Black	506-612-1232
Bill Barrett	506-612-1154
Jocelyn Barrett	506-328-7011
Mike Goodine	506-449-8050
Billy Elmhirst	705-761-0896
Mark Sloat	506-461-1988
Tom Harrison Jr.	613-379-1006
Andy Acheson	506-325-0500

Directions...

South on Trans Canada Highway
Exit 172
Turn Left Off Exit (under TCH Highway)
Take First Road On Right
Turn Right At Flashing Light (Estey Road)
Estey Road becomes Wilmot Road, stay right on sharp turn on stone bridge
Farm is at 240 Wilmot Road

North on Trans Canada Highway
Exit 172
Turn Right Off Exit
(same as above)

Delivery...

Bird's Hill Farms and consignor's will arrange delivery at cost to the buyer. All cattle will be available for loading as soon as payment has been made. Purchases will be looked after for one month at no charge until delivery can be arranged.

Schedule...

Sept. 10	Cattle viewing Noon - Dusk
Sept. 11	Noon - Lunch Available Proceeds to the local 4-H Club 1:00pm Down East Hereford Sale

Live on the Internet, Live Audio, Video, Bidding and Accounting
LiveAuctions.TV

Real-time bidding is available via the internet for this sale. Live audio and live video will allow buyers to bid on animals just as if they were present at the sale.

Buyers must create an account prior to the sale. Please visit <http://www.LiveAuctions.tv> to create an account and request a buyer number. Instructions are available at <http://www.LiveAuctions.tv> to walk you through the account setup process.

Web Address - <http://www.LiveAuctions.tv>
E-mail - brad@LiveAuctions.tv
Questions - Call Jill Mader 403-990-9187

Buyers who would like to bid via the internet must register with LiveAuctions.tv two days prior to the sale.



Welcome from Birds Hill...

On behalf of all participating New Brunswick Hereford breeders; welcome to our Second Annual DownEast Hereford Sale.

With over 40 lots this year we are pleased that we continue to increase the size of our sale and are confident you will see evidence of more breadth and depth in the quality of our offerings.

We believe we have something for everyone whether you are looking for show cattle, proven genetics or to improve your commercial herd. We have it all here so please come join us on Saturday, September 11th.

*Bill and Jocelyn Barrett
Dale Black*

Accommodations...

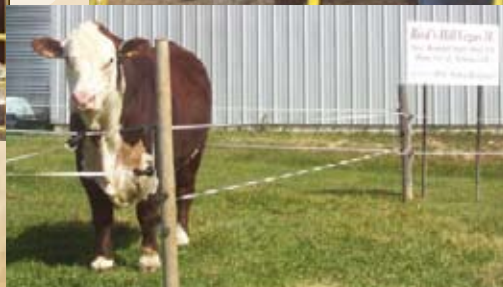
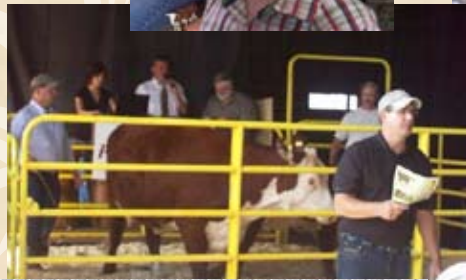
Sale Headquarters
Best Western Woodstock Inn & Suites
123 Gallop Ct
Woodstock, NB
506-328-2378 or 1-888-580-1188
(block of rooms held under Jocelyn Barrett until
Aug 28th)

Econo Lodge Woostock
168 Route 555
Woostock, NB
506-328-8876

Howard Johnson Woostock Inn
159 Route 555 Exit 188
Trans Canada Highway
Woodstock, NB
506-328-3315 or 1-877-328-1961

Florenceville Motor Inn
239 Burnham Street
Florenceville, NB
506-392-6053

Kozy Acres Camping
TCH 2 Exit 191
506-328-6287



New Brunswick Polled Hereford Farmers

A.X.A. Polled Herefords

Allan Marshall
Hampton, NB
506-636-1877 cell

Andrew Acheson

Wilmot, NB
506-325-0500

Bird's Hill Farms

Jocelyn & Bill Barrett
Wilmot, NB
506-328-7011 cell

Earlybird Farm

Gordie & Allyson Raymond
Waterford, NB
506-433-9098

Hidden Meadow Farms

Ben & David Alward
Riceville, NB
506-272-2959

Roy Goodine

Bear Island, NB
506-363-2756

Loon Point Herefords

Jim McFarland
Cambridge Narrows, NB
506-488-3100

Meadowlane Farms

Don Harding
Burts Corner, NB
506-363-5627

Triple B Cattle Company

Steve Goodine
Bear Island, NB
506-363-8917

Wilson Polled Herefords

Vance Wilson
Hamtown Corner, NB
506-452-7810

Sunnybrook Farm

Audrey & Peter Kidney
Weston, NB
506-328-3604



C02940240 AXA 112X 31/01/2010 (Open Female)

1 AXA 3S AUGUSTA 112X



GOLDEN-OAK 4J MAXIUM 28M

Sire: GOLDEN-OAK FUSION 3S

NCX MISS JR NELLIE 528N

EAGLE-RIDGE BLASTER ET 4J

TA-BAR CHANTELLE 15K

NCX 23C JUPITER 16J

MFR LASS 113H

EPDs

BW 4.5

WW 50

YW 77

MM 15.4

TM 40

REMITALL HERITAGE 89H

MM RSM STOCKMASTER 512

PLAIN LAKE BELLE 20X 117P 5B

Dam: THCF ONONDAGA SKYE 10P

MAY'S NATASHA Y131 518J

JR 257T RANCHER Y131

ALLIANCE D61 NATASHA ET 318G

A Golden Oak Fusion 3S Heifer calf who could provide an OUTCROSS for many herds in Canada. Out of a female John Hill described as one of the best females at Onondaga. Excellent EPD's and excellent future.

Consigned by: **ALLAN D MARSHALL**

2 C02927983 AXA 111W 29/01/2009 (Bred female)

2 AXA 3S FUSION FANNY 111W



GOLDEN-OAK 4J MAXIUM 28M

Sire: GOLDEN-OAK FUSION 3S

NCX MISS JR NELLIE 528N

EAGLE-RIDGE BLASTER ET 4J

TA-BAR CHANTELLE 15K

NCX 23C JUPITER 16J

MFR LASS 113H

EPDs

BW 3.8

WW 46

YW 72

MM 9.8

TM 33

DWAYNE'S 98P TALLY HO 39T

ACE TALLYS PUCK 98P

GOODINE 930K JUDY 45P

Dam: AXA TALLY 203S

KFF KERN'S HURRAH 18H

RLOA ULTIMO ET 74U

KFF KERN'S FANTANNA 4F

This poor heifer had her owner tick the wrong box and she was registered as a bull. With the help of the CHA she had a sex change.

Bred Al Harvie Traveler on March 21st, 2010

Exposed to OVHF Universal 30U from April 9th, 2010 to April 30th, 2010. Preq checked safe in calf.

Consigned by: **ALLAN D MARSHALL**

3 C02926929 AXA 101W 01/01/2009 (Bred Female)

3 AXA 220P CONTENDER LADY 101W



FCC 60G MADDUX 4L

Sire: GF 4L CONTENDER 220P

HAROLDSON'S PRIMROSE 24F 38L

JSF 23 NIBBS 60G

SVR 15D JADE 554G

BAR-E-L 740C CARSON 24F

YY 125Y PRIMROSE 626F

EPDs

BW 2.6

WW 35

YW 62

MM 14.4

TM 32

JR NICK THE BUTLER P183

BT BUTLER 452M

PRL BET NICKY 352J

Dam: AXA P183 11B NICKY 102M

AXA CROSSFIRE CARA 11B

ALLG T518 CROSSFIRE ET 104Z

BNMHPH MS MOTIVATOR 128Z

A bred heifer we expect to be a valuable addition to any herd. Preq checked safe in calf.

Bred Al to WLB Shapely on March 21st, 2010

Exposed to OVHF Universal 30U (plus 21 for milk) from April 9th, 2010 to April 30th, 2010.

Consigned by: **ALLAN D MARSHALL**

4 C02913007 AXA 307U 11/04/2008 (Bred Female)
AXA 1025R WILDA 307U



REMITALL BOOMER 46B
 CS BOOMER 29F CS MISS 1ST FLAG 21A

Sire: GF 29F NEW RELEASE 1025R
 BNC CS OL GRACE ET 927N REMITALL ONLINE 122L
 DLR MISS DIXIE 143B

MSU STAR HEADLINER
 FELTONS 517
 WNH MS OPTIMA 9401

Dam: NEWTREND 10H WILDA 46L
 WTK 4U WILETTA 121X ACE MOHICAN BROKER 4U
 AHH MISS ANXIETY SPIDEL 46K

EPDs
 BW 4.6
 WW 44
 YW 77
 MM 15.4
 TM 40

This heifer is part of an experiment at A.X.A. We had four late March and April heifer calves and held them over to come into line for early calving. We kept three and are offering this heifer. Solid female. Preq checked sale in calf.
 Bred AI to Golden Oak Fusion 3S on March 21st, 2010
 Exposed to OVHF Universal 30U (plus 21 for milk) from April 9th to April 30th, 2010.
Consigned by: ALLAN D MARSHALL

5 C02883743 AXA 204S 20/02/2006 (Bred female)
AXA 17M SALLY 204S



REMITALL BOOMER 46B
 BNC 46B BASELINE 414H DU-RAPIDE PENELOPE ET 78D

Sire: WILSONS 414H MERCURY 11H 17M
 SPRING-COVE HANDSOME 11H FOSHAY TREND ESQUIRE 9E
 SPRING-COVE FEISTA 1F

OVHF LINK 7E
 TRM CCF PRIDE
 OVHF 400R PEARL 6Y

Dam: AXA 7E PRECIOUS LADY 107G
 AXA 38N CROSSFIRE CARESS 403C ALLG T518 CROSSFIRE ET 104Z
 MB MISS STICK 38N P C02119633

EPDs
 BW 3.5
 WW 37
 YW 64
 MM 7.8
 TM 26

A young cow with lots of productive time left. Her dam is still productive in the herd of Shar-Lo Polled Herefords. We have two half sisters in our herd.
 Exposed to OVHF Universal 30U a Raftsman son (plus 21 for milk) we bought last fall. Cole Harvie says Universal has produced one of the best group of calves he's seen this year. Exposure May 1st, 2010 to May 24th, 2010. Preq checked safe in calf.

5a) C02940244 AXA 202X 01/02/2010 (Open Female)
AXA 3S SARASOTA 202X



GOLDEN-OAK FUSION 3S

EAGLE-RIDGE BLASTER ET 4J
 GOLDEN-OAK 4J MAXIUM 28M TA-BAR CHANTELE 15K

Sire: GOLDEN-OAK FUSION 3S
 NCX MISS JR NELLIE 528N NCX 23C JUPITER 16J
 MFR LASS 113H

EPDs
 BW 3.2
 WW 42
 YW 70
 MM 15.8
 TM 34

Another Golden Oak Fusion 3S heifer calf who could provide an OUTCROSS for the purchaser. Good calf who should prove to be a solid producer.

Consigned by: ALLAN D MARSHALL

C02860783 AXA 113R 27/01/2005 (Bred Female)
6 AXA KB MISS ROYALTY 113R



REMITALL BOOMER 46B
Sire: OVHF 46B KABOOM 5K
 OVHF 4E SUNDROP 25G

REMITALL KEYNOTE 20X
 REMITALL SALLY'S LASS ET 120X

OVHF 100A FERRARI 4E
 OVHF P183 MAGNUM SPECIAL 25Z

BT BUTLER 452M
 JR NICK THE BUTLER P183
Dam: AXA P183 11B NICKY 102M
 AXA CROSSFIRE CARA 11B

ALLG T518 CROSSFIRE ET 104Z
 BNMHPH MS MOTIVATOR 128Z

EPDs
 BW 5.5
 WW 39
 YW 65
 MM 8.0
 TM 27

A solid female who has been a consistent producer.
 Exposed to OVHF Universal 30U our Raftsmen son from May 1st, 2010 to May 24th, 2010. Preg checked safe in calf. Universal is plus 21 for milk.

C02938936 AXA 207X 14/02/2010 (Open female)
6a) AXA 220P CORAL 207X



FCC 60G MADDUX 4L
Sire: GF 4L CONTENDER 220P
 HAROLDSON'S PRIMROSE 24F 38L

JSF 23 NIBBS 60G
 SVR 15D JADE 554G

BAR-E-L 740C CARSON 24F
 YY 125Y PRIMROSE 626F

EPDs
 BW 4.9
 WW 42
 YW 73
 MM 15.8
 TM 37

A solid heifer with solid EPD's and a solid future.

Consigned by: **ALLAN D MARSHALL**

C02938945 AXA 105X 07/01/2010 (Male)
7 AXA 58G VIKING 105X



REMITALL KEYNOTE 20X
Sire: RU 20X GALAXY 58G
 RU 10A ELM 57E

REMITALL TEAMSTER 9T
 REMITALL PATRICIA 99P

REMITALL ACME 10A
 RU 40L BUTTERCUP 57Z

HARVIE HILLS 68H
 HARVIE LADIES MAN 4L
 HARVIE MISS JULIE 9J
Dam: AXA 4L ULTRA LADY 104U
 OLTN 56G MADELAINE 7M

HAROLDSON'S DRUMMOND ET 56G
 OLTN 18A FIDELITY 25F

EPDs
 BW 3.5
 WW 41
 YW 79
 MM 27.3
 TM 48

Combines the maternal strength of Galaxy with the consistent production of Harvie Ladies Man who produces bone and muscle. We like the potential of this calf and will offer 50% interest and 50% possession. Halter broken.

Consigned by: **ALLAN D MARSHALL**

C02938943 AXA 101X 01/01/2010 (Male)
8 AXA 69T SPEEDWAY 101X



LEELANDS TRANSITION T7
 KAIRURU ABERDEEN 03 0047 KAIRURU PLUM T44
Sire: HARVIE TRAVELER 69T
 HARVIE PEARL 129P
 LEVELDALE KODIAK 23C ET 19K EPDs
 EASTON 26Y IRON LADY 43A BW 4.2
 REMITALL KEYNOTE 20X WW 54
 YW 92
 RU 20X GALAXY 58G RU 10A ELM 57E MM 19.3
Dam: AXA 58G ULTIMATE 101U TM 46
 AXA 17M SUBLIME 101S WILSONS 414H MERCURY 11H 17M
 AXA P183 NICKIE 18H 12N

No more RU Galaxy 58G semen available. Possibly your last chance to benefit from the Galaxy maternal traits. Combine maternal traits and strength of Harvie Traveler for an excellent herd sire prospect. Halter broken.

Consigned by: ALLAN D MARSHALL

C02909099 LUKE 4U 02/04/2008 (Bred female)
9 LOON-POINT ULYSSA 4U



STAR MKS LIMELIGHT 288G STAR L1 TEXACO 1ET
 DLR MISS DIXIE 143B
Sire: BLAKNEY'S 288G LIMELIGHT 102R
 LOYD LANNA 23L MM PACEMAKER 073 EPDs
 BNC 210E JUDY 121H BW 1.7
 WW 36
 FCF SUPER STAR 043 YW 59
 SPRING-COVE NEAL 11N BNC 108E LADY LUCK 429G MM 6.7
Dam: LOON-POINT SATISFACTION 7S TM 25
 LOON-POINT'S PATCHES 8P KIMBROOK MAVERICK 1K
 LOON-POINT'S LUCY 2L

Ulyssa is a 2 year old, Limelight granddaughter. She is one of those cows that everybody wants. She is very feminine, easy to handle, she has an excellent udder and produces lots of milk. She promotes both moderate size and calving ease. She is doing an excellent job, and putting everything into her first calf. Pasture exposed to an exciting young sire out of Harvie Traveler 69T and Barrons 42H Miss 12L - Bird's-Hill 12L Wygan 168W.



Bird's-Hill 12L Wygan 168W

C02940053 ACH 402X 03/04/2010 (Open Female)
9a) ACHESON 1P XING 402X



CHSF 5G BRANDON 20K CHSF GEMINI 5G EPDs
 CHSF 26X BEAUTY 88 36E BW 2.5
Sire: EARLYBIRD 20K 16A PRINCE 1P WW 34
 EARLYBIRD SARA 16A ALLG T518 ON LINE 122X YW 56
 EARLYBIRD SARAH 7X MM 8.3
 TM 25

Xing has been an excellent heifer calf from day one. She is a low birth weight, rapid growing calf. Like her dam she too is very feminine and promotes calving ease and moderate size. This calf has potential to be a great cow just like her own dam.

Consigned by: ANDREW ACHESON

10 C02938786 BH 101X 01/01/2010 (Open Female)
BIRD'S-HILL GOVERNESS 101X



REMITALL PATRIOT ET 13P
Sire: REMITALL SUPER DUTY 42S
 REMITALL RITA 91H
 FELTONS 517
 REMITALL FLORAL RITA 102F
 EPDs
 BW 5.9
 WW 55
 YW 91
 MM 18.0
 TM 45

OTAPAWA SKYMATE 2046 (ET)
Dam: HARVIE MS FIREFLY 60T
 HARVIE PAMELA 90P
 HARVIE MATADOR 28M
 HARVIE MISS CONNIE 1Y 19L

In our commitment to consign one of our best we offer you Governess. This Super Duty daughter not only tops our heifer pen in regards to performance, she brings excitement in her pedigree as she traces back to Harvie Miss Firefly 51F. An exciting opportunity.

Consigned by: BIRD'S HILL

11 C02940951 BN 1109X 12/01/2010 (Open female)
BNC-BH 42S GEISHA 1109X



REMITALL PATRIOT ET 13P
Sire: REMITALL SUPER DUTY 42S
 REMITALL RITA 91H
 FELTONS 517
 REMITALL FLORAL RITA 102F
 EPDs
 BW 9.2
 WW 61
 YW 102
 MM 20
 TM 51

FCC 60G MADDUX 4L
Dam: BNC 4L GEISHA ET 410N
 OLTN 707B ROSE 23H
 KLONDIKE 28U 707B
 OLTN P183 ROSE 5D

A daughter of Super Duty and out of a big volumed Maddox daughter that always gives us one of our top calves. A strong cow prospect.

Consigned by: BIRD'S HILL

12 C02927295 BH 288W 23/02/2009 (Bred Female)
BIRD'S-HILL NICKI 288W



PRL 425E LAD 500K
Sire: GF 500K CROWN ROYAL 306T
 BARRONS PEACHES E-93 5H
 DRF GERBER E-MALE 93E
 KILMORLIE 75A PEACHES 576C
 EPDs
 BW 2.1
 WW 30
 YW 52
 MM 16.7
 TM 32

C-S PURE GOLD 98170
Dam: STAR 2013 NICOLA 193T
 HB STAR BATTLE GROUND 2013
 MSU MISS WRANGLER 61J
 JWR 114 NICOLE 118P
 CMR GV HHH P606 VICTOR 1236 ET
 WVPH VICTORIA 9708 114

A big ribbed, deep bodied heifer, with an early service to WLB Global. Nicole's dam and grand dam were purchased from Star Lake and have turned into one of our top families. JWR 118P's 2009 heifer calf sold in Elmlodge sale for \$4,900.

Consigned by: BIRD'S HILL

C02941241 BH 102X 02/01/2010 (Male)
13 BIRD'S-HILL XPECTATION 102X



REMITALL PATRIOT ET 13P
Sire: REMITALL SUPER DUTY 42S
 REMITALL RITA 91H
 FELTONS 517
 REMITALL FLORAL RITA 102F
 JSF 23 NIBBS 60G
 SVR 15D JADE 554G
 FCC 60G MADDUX 4L
Dam: GF 4L MELISSA 222P
 BARRONS 42H MISS 12L
 HAROLDSON'S 8E SABRE ET 42H
 GL 25X MISS STEEL 16E

	EPDs
	BW 5.9
	WW 57
	YW 97
	MM 19.9
	TM 48

Xpectation did not get his name lightly. A full brother to Vegas BH3U and possibly one of the best bulls ever born at Bird's Hill, he combines the muscle expression and performance of Super Duty and the maternal power and consistency of ANVP 222P. We have high XPECTATIONS for BH102X.

Terms to be announced sale day.

Consigned by: BIRD'S HILL



Bird's-Hill Vegas BH 3U

C02941242 BH 111X 15/01/2010 (Male)
14 BIRD'S-HILL XCALIBER 111X



REMITALL PATRIOT ET 13P
Sire: REMITALL SUPER DUTY 42S
 REMITALL RITA 91H
 FELTONS 517
 REMITALL FLORAL RITA 102F
 JSF 23 NIBBS 60G
 SVR 15D JADE 554G
 FCC 60G MADDUX 4L
Dam: GF 4L LITTLE PEACH 321R
 BARRONS PEACHES E-93 5H
 DRF GERBER E-MALE 93E
 KILMORLIE 75A PEACHES 576C

	Projected
	EPDs
	BW 6.9
	WW 60
	YW 101
	MM 19.9
	TM 50

Xcaliber is a high performing Super Duty son that will surely add muscle and performance to his calf crop. A full brother to Bird's Hill Pearl BH37U who was the top selling bred heifer at the 2009 Elmlodge sale. Consistency in the blood lines.

Consigned by: BIRD'S HILL



Bird's-Hill Pearl BH37U

15(2) FROZEN EMBRYOS



REMITALL PATRIOT ET 13P
Sire: REMITALL SUPER DUTY 42S
 REMITALL RITA 91H
 FELTONS 517
 REMITALL FLORAL RITA 102F
 REMITALL EMBRACER 8E
 HAROLDSON'S 8E SABRE ET 42H
 HAROLDSON'S ROSE ET 74D
Donor: BARRONS 42H MISS 12L
 GL 25X MISS STEEL 16E
 GL T-5 PRIORITY X 25X
 GL T89 127U MISS STEEL 117Z

	EPDs
	BW 4.0
	WW 47
	YW 81
	MM 15.5
	TM 39

OBO 12L is a true matron in the herd. She is responsible for numerous herd sires and her daughters continue her legacy with Vegas and Xpectation. Consistency probably best describes her whether its bulls or heifers 12L's offspring are herd improvers. We flushed 12L this spring to Super Duty wanting to put more of her influence in our herd. She gave us 23 number one embryos. Now here is a great opportunity to add some of this quality to your herd.

Consigned by: BIRD'S HILL

C02940123 RGR 11X 11/01/2010 (Open Female)
16 EARLYBIRD 035J 2R LILY 11X



REMITALL KEYNOTE 20X
 RU 20X BOULDER 57G RU 10A DEW 57D
Sire: TA-BAR WLB FORMULA 035J
 TA-BAR 12E LAURA 135G P PLAIN LAKE KEYN 126B EXTRA 12E EPDs
 TA-BAR LAURA 135E BW 6.0
 CHSF 5G BRANDON 20K CHSF GEMINI 5G WW 44
 CHSF 26X BEAUTY 88 36E YW 73
Dam: EARLYBIRD 20K 7K RACHAEL 2R MM 17.1
 EARLYBIRD 832W 9E SERENA 14K TM 39
 EARLYBIRD B59 REBAR 9E
 EARLYBIRD 832W 9E SERENA 14K CIRCLE-D WRANGLER 832W
 EARLYBIRD B59 REBAR 9E

This heifer is out of our son, Reggie's cow, and she has consistently produced quality animals. She should be a tremendous brood cow.

Consigned by: **REGGIE RAYMOND**

C02940130 GAR 9X 10/01/2010 (Open Female)
17 EARLYBIRD 2U 3U VIOLET 9X



RU 20X BOULDER 57G
 CCR 57G STAMINA ET 199S GOLDEN-OAK 46B KEEPSAKE 23K
Sire: EARLYBIRD ST 15L UNIVERSAL 2U
 EARLYBIRD 4J SALLY 29E 15L EARLYBIRD 832W 9F JUSTIN 4J EPDs
 EARLYBIRD 12C BRIGHT 30A 29E BW 2.2
 NS KENO 005 JSF 37 271 DEVO 23C WW 39
 GK APOLLONIA 834Z YW 71
Dam: EARLYBIRD NS KENO 25S SHENI 3U MM 14.0
 EARLYBIRD 7P 7P SHEENA 25S TM 34
 LESSARD 25F COLORADO 7P
 EARLYBIRD 14H PATRICIA 7P

This heifer is out of a Stamina son. She's very dark and feminine and her 2 year old dam has done a tremendous job on her. We think she's a welcome addition to any herd.

Consigned by: **ALLYSON & GORDON RAYMOND**

C02940103 GAR 7X 10/01/2010 (Open Female)
18 EARLYBIRD 199S 9L EMILY 7X



RU 20X BOULDER 57G
 REMITALL KEYNOTE 20X
 RU 10A DEW 57D
Sire: CCR 57G STAMINA ET 199S
 GOLDEN-OAK 46B KEEPSAKE 23K REMITALL BOOMER 46B EPDs
 GOLDEN-OAK Y166 DONNA 5D BW 5.4
 BAR H L1 CHANCE 55S WW 46
 CIRCLE-D WRANGLER 832W CIRCLE D 193 SILHOUETTE 335S YW 81
Dam: EARLYBIRD 832W LOLITA 9E 9L MM 11.5
 EARLYBIRD B59 REBAR 9E TM 34
 CARLSONS BARNONE B59
 EARLYBIRD 67K SERENA 6A

Here's a thick, stylish heifer with a mama with LOTS of milk! We think you'll like her as much as we do!

Consigned by: **ALLYSON & GORDON RAYMOND**

19 C02941732 BENA 2X 24/01/2010 (Open Female)
BENA 42S ANGELA 2X



REMITALL PATRIOT ET 13P
Sire: REMITALL SUPER DUTY 42S
 REMITALL RITA 91H
 FELTONS 517
 REMITALL FLORAL RITA 102F
 EPDs
 BW 7.3
 WW 57
 YW 96
 MM 16.7
 TM 45

EASTON 20X QUINN 12D
Dam: HAROLDSON'S WLC ANGELA 12D 26N
 HAROLDSON'S 42H ANGELINA 70L
 HAROLDSON'S 8E SABRE ET 42H
 HI-CLIFFE 81X ENCHANTMENT 151E

Angela 2X is one of the best calves we have raised. She was recently named reserve heifer calf in the bred and owned division at Bonanza 2010. Ben sold her 2009 maternal sister to Triara and she went on to place third in her class at the 2009 Royal Winter Fair. 2X is sired by the popular Super Duty bull. She is correctly made, deep, thick with lots of natural muscle, yet still maintains that beautiful showy front end. She will make a can't miss show heifer and better still, an outstanding cow.

Consigned by: **BENJAMIN ALWARD**

20 C02831254 GCFH 4N 13/02/2003 (Bred female)
FCC 4L LADY VICTORIA 4N



JSF 23 NIBBS 60G
Sire: FCC 60G MADDUX 4L
 SVR 15D JADE 554G
 KLONDIKE 707B 15D
 KFRD 75A JADE ET 550C
 EPDs
 BW 5.7
 WW 41
 YW 72
 MM 17.1
 TM 37

VLSF DELUXE ET 220W
Dam: DTHF DELUXE 18E
 MISS VICTORIOUS 14A
 WC BUTLER LM 640T 75W
 VICTORIOUS 36R

Lady Victoria was purchased by Ben, as a calf from Craig Flewelling as his 4H project. She was third in her class at Agribition as a calf and has gone on to be an excellent cow. Her mother is the famous Deluxe 18E cow who was one of Craig's foundation females. We are retaining an outstanding Moose daughter. Look closely at her January heifer calf at side and you will realize the genetic value of this female.

Bred 21 March 2010 to Remitall Super Duty 42S.

Consigned by: **BENJAMIN ALWARD**

20a) C02941733 BENA 1X 09/01/2010 (Open Female)
BENA 42S LADY VICTORIA 1X



REMITALL PATRIOT ET 13P
Sire: REMITALL SUPER DUTY 42S
 REMITALL RITA 91H
 FELTONS 517
 REMITALL FLORAL RITA 102F
 EPDs
 BW 7.0
 WW 52
 YW 89
 MM 17.8
 TM 44

FCC 60G MADDUX 4L
Dam: FCC 4L LADY VICTORIA 4N
 DTHF DELUXE 18E
 VLSF DELUXE ET 220W
 MISS VICTORIOUS 14A

This deep-sided showy female is an excellent prospect for not only a show heifer but also a foundation brood cow. She is smooth made and has a wonderful disposition. 1X is sired by Agribition Champion Remitall Super Duty 42S, who's daughters in production are demonstrating his real value.

Consigned by: **BENJAMIN ALWARD**

21 C02929185 LRY 413W 13/04/2009 (Bred Female)
LRY 103S SHE GOT THE LOOK



MHCVB 68M PROWLER 118P
 STAR AMERICA BNMHPH SS MKS 68M
 DS 23C KATE 2K

Sire: MHPH 118P SUMMIT 103S

ALLIANCE 707B ROSE ET 201H	KLONDIKE 28U 707B	EPDs
	HAROLDSON'S ROSE ET 74D	BW 3.7
	REMITALL EMBRACER 8E	WW 35
GOODINE 8E LINE ONE 207M	LRY 118H MISS WINDSTAR 215K	YW 66
		MM 9.8
		TM 27

Dam: GOODINE 207M MODEL 402R

LRY 118H MODEL 214K
 LRY BEARCAT 118H
 GOODINE 1900 RACINE 404Z

This female is bred to be a true production female in the future, her dam is a sharp fronted female with tons of milk. Her sire, Summit has proved himself over and over for us. This extremely attractive young heifer has been bred to the Elmlodge Wizard 12W bull which was top selling bull calf in the 2009 Elmlodge sale.

Bred to Elmlodge Wizard on May 5, 2010.

Consigned by: **ROY S GOODINE**



22 C02929184 LRY 115W 15/01/2009 (Bred female)
LRY 103S SHE'S A DANDY 115W



MHCVB 68M PROWLER 118P
 STAR AMERICA BNMHPH SS MKS 68M
 DS 23C KATE 2K

Sire: MHPH 118P SUMMIT 103S

ALLIANCE 707B ROSE ET 201H	KLONDIKE 28U 707B	EPDs
	HAROLDSON'S ROSE ET 74D	BW 3.7
	REMITALL EMBRACER 8E	WW 44
GOODINE 8E LINE ONE 207M	LRY 118H MISS WINDSTAR 215K	YW 76
		MM 14.4
		TM 36

Dam: DANDY 127R

PINDER VICKI 134B
 RUGER-38'-B-23
 PINDER CONNIE 128Z

This big volume heifer is bred to become a great working female. She has super udder development which isn't a surprise, being sired by the Summit bull. She has a early breeding to the Elmlodge Wizard 12W bull.

Bred to Elmlodge Wizard 12W on March 24, 2010.

Consigned by: **ROY S GOODINE**

LOTS 23 & 23A SELLING ON CHOICE

23 C02882111 LRY 219S 19/02/2006 (Bred Female)
GOODINE 207M SELECT 219S



REMITALL ACME 10A
 REMITALL EMBRACER 8E
 PLAIN LAKE BELLE 20X 117P 5B

Sire: GOODINE 8E LINE ONE 207M

LRY 118H MISS WINDSTAR 215K	LRY BEARCAT 118H	EPDs
	GOODINE 108E SELECT 314G	BW 7.3
		WW 51
4K KFF KAZZ	KLONDIKE 707B 15D	YW 92
	4K ST CORNUCOPIA 4W	MM 11.7
		TM 37

Dam: KFF KERN'S MONIQUE 7M

L'ANTIQUE MERIDIAN 220G
 BIG T 75A MERIDIAN D61
 L'ANTIQUE BINGO 110E

Select has been part of show team since a calf, with a championship record the whole way through including overall futurity champion last year. This is the type of female that will work in any herd. We have kept a full sister to the 2010 breeding and she looks great with a perfect udder. Select and Susie are entered in the Futurity at NB Beef Expo. This pair will be a tough one, bid with confidence.

Bred to MHPH 118 Summit 103S on March 23, 2010.

Consigned by: **STEPHEN GOODINE**

23a)

C02942097

LRV 217X 17/02/2010 (Open Female)

LRV 217T SUSIE 217X

LOTS 23 & 23A SELLING ON CHOICE



FCC 60G MADDUX 4L

Sire: GOODINE 4L BRODEUR 217T

LRV GEM 205J

JSF 23 NIBBS 60G

SVR 15D JADE 554G

MM RSM STOCKMASTER 512

GOODINE 108E SELECT 314G

EPDs

BW 8.0

WW 61

YW 106

MM 15.6

TM 46

We feel this could be our top calf prospect in the herd, she has lots of depth like her dam and is right on at both ends. Her sire Goodine 4L Brodeur 217T has left us with super calves on all different types of cows, a sure sign of a great breeding bull. Suzie 217X is Futurity entered at the NB Beef Expo, and should be very competitive to say the least. If she is not selected in the choice she will be on our show team this fall.

Consigned by: **STEPHEN GOODINE**

24

C02940569

ARJB 17X 23/02/2010 (Open female)

KIDNEY'S KELLY 17X



FCC 60G MADDUX 4L

Sire: KIDNEY'S TNT 7T

KIDNEY'S GOVERNESS 5K

JSF 23 NIBBS 60G

SVR 15D JADE 554G

REMITALL GOVERNOR 236G

EARLYBIRD 74U FLORA 3G

REMITALL BOOMER 46B

KIDNEY'S FIRST CHOICE 17C

Dam: KIDNEY'S PRIDE 5P

KIDNEY'S JENNA 5J

S7R 583B TOUCHDOWN ET 475E

EARLYBIRD 74U FLORA 3G

Here is a late February heifer out of a Maddux son in our herd. Her dam, Kidney's Pride 5P was champion female in Fredericton, N. B. as a calf and her grandmother was reserve senior female in Fredericton, N. B. as well. Kelly has a great background, just take a look. Maddux, Nibbs, Governor 236G, 46B and Touchdown. She is sharp fronted, feminine and will make a great cow.

Consigned by: **LAWRENCE KIDNEY & SON**

25

C02940571

ARJB 11W 17/01/2009 (Bred Female)

KIDNEY'S WATCH OUT 11W



FCC 60G MADDUX 4L

Sire: KIDNEY'S TNT 7T

KIDNEY'S GOVERNESS 5K

JSF 23 NIBBS 60G

SVR 15D JADE 554G

REMITALL GOVERNOR 236G

EARLYBIRD 74U FLORA 3G

REMITALL BOOMER 46B

REMITALL THOMASA 115T

REMITALL GUIDELINE 33G

Dam: KIDNEY'S PAIGE 19P

KIDNEY'S JEAN 3J

NJW 1Y WRANGLER 19D

KIDNEY'S NERISSA 5G

Here is another female out of our Maddux son. She is a deep sided yearling out of a Guideline daughter which has raised a good calf for us year after year and Watch Out 11W is no exception.

Exposed to GF13P Captain Morgan 131T, noticed bred May 21 and Preg. checked and is safe to that date. We have some calves on the ground by Captain Morgan which we are happy with. He is a low birth weight sire.

Consigned by: **LAWRENCE KIDNEY & SON**

C02913571 ARJB 1U 19/01/2008 (Bred Female)

26 KIDNEY'S UNIQUE 1U



ELM-LODGE JURASSIC 13J
Sire: ELM-LODGE RESULTS 80R
 EJM MISS MCEACH 9K
 FELTONS 517
 EJM MISS VICKY 65H

S7R 583B TOUCHDOWN ET 475E
Dam: KIDNEY'S JOYCE 11J
 KIDNEY'S NORA 4G
 REMITALL BOOMER 46B
 ALLASPRING 30/30 KAY 421W

Here is a good Elmlodge Results 2 year old. She is quiet, clean fronted with a nice udder. As you can see from her January heifer calf at side she is doing a great job. She should fit into anyone's herd.
 Exposed to GF13P Captain Morgan 131T noticed bred May 25 and preg. checked and safe to that date.

C02940563 ARJB 3X 03/01/2010 (Open female)

26a) KIDNEY'S XRAY LADY 3X



CS BOOMER 29F
Sire: FORC 29F BOOMER 18L
 L'ANTIQUE MISS EDGERTON 210J
 STAR EDGERTON MKS TJH
 ALLIANCE 23C NATALIE 113G

REMITALL BOOMER 46B
 CS MISS 1ST FLAG 21A

X-Ray Lady 3X is a Boomer daughter which we are very happy with. She shows lots of volume, sharp fronted with lots of rib and a good topline.
 Take a look at her pedigrees: 29F, 46B on one side, Results, Jurassic and Touchdown on the other. Don't miss this one so take a second look, you'll be happy you did.

Consigned by: **LAWRENCE KIDNEY & SON**

C02935970 LUKE 9W 09/05/2009 (Bred Female)

27 LOON-POINT WINNIE 9W



CHSF GEMINI 5G
 CHSF 26X BEAUTY 88 36E
Sire: EARLYBIRD 20K 16A PRINCE 1P
 EARLYBIRD SARA 16A
 ALLG T518 ON LINE 122X
 EARLYBIRD SARAH 7X

KIMBROOK MAVERICK 1K
Dam: LOON-POINT RAPUNZEL 1R
 LOON-POINT A-OKAY 3K
 WILGOR 25Y BEAU RIVAL 41C
 SUNGLOW SUE GWG 7G

EPDs
 BW 2.8
 WW 29
 YW 50
 MM 8.3
 TM 23

Winnie is a young, dark heifer with a little extra white, but not enough to keep her from our show string. The dam of this quiet, feminine heifer had a super bull calf this year which Luke is raising for his 4-H Steer Project.
 Bred to Elm-Lodge Next Big Thing 3N June 22nd.
 Exposed to Loon-Point Valour 1W from July 13th to August 31st.
 Consigned by: **LOON POINT HEREFORDS**

28 LOON-POINT WISHING WELL 6W

C02935969

LUKE 6W 01/04/2009 (Bred Female)



CHSF 5G BRANDON 20K
CHSF 26X BEAUTY 88 36E

Sire: EARLYBIRD 20K 16A PRINCE 1P

EARLYBIRD SARA 16A
ALLG T518 ON LINE 122X
EARLYBIRD SARAH 7X

SPRING-COVE NEAL 11N
BNC 108E LADY LUCK 429G

Dam: LOON-POINT SATISFACTION 7S

LOON-POINT'S PATCHES 8P
KIMBROOK MAVERICK 1K
LOON-POINT'S LUCY 2L

EPDs
BW 0.1
WW 27
YW 46
MM 8.6
TM 22

Wishing Well is a medium framed, thick heifer. Quiet and halter broke she is a pleasure to work with around the farm.

Bred to Elm-Lodge Next Big Thing 3N July 2nd.

Exposed to Loon-Point Valour 1W July 23rd to August 31st.

Consigned by: LUKE MC FARLAND

29 LOON-POINT SNOWFLAKE 2W

C02935967

LUKE 2W 02/03/2009 (Bred female)



CHSF 5G BRANDON 20K
CHSF 26X BEAUTY 88 36E

Sire: EARLYBIRD 20K 16A PRINCE 1P

EARLYBIRD SARA 16A
ALLG T518 ON LINE 122X
EARLYBIRD SARAH 7X

KIMBROOK MAVERICK 1K

Dam: LOON-POINT LADY SUE 7M

SUNGLOW SUE GWG 7G
WILSONS Y7 BI WAY 516T 19B
HUNTER'S JUST PRINCESS SUE 12A

EPDs
BW 1.6
WW 24
YW 40
MM 6.5
TM 19

Snowflake is a deep, thick, meaty heifer who is comfortable in the show ring. She has a quiet disposition and we feel she has the potential to become an excellent brood cow.

Her new owner can look forward to a February calf.

Bred AI April 29th to Elm-Lodge Next Big Thing 3N

Exposed to Loon-Point Valour 1W from May 20th to August 31st

Consigned by: LOON POINT HEREFORDS

30 MEADOW-LANE 7R9S WENDY 1W

C02927252

DDLK 1W 16/01/2009 (Bred Female)



REMITALL GOVERNOR 236G
REMITALL OLYMPIAN ET 262L
REMITALL CATALINA 24H

Sire: WILSONS 262L ROCKET 1M 7R

WILSONS 10H MISTY 14C 1M
MSU STAR HEADLINER
WILSONS A23 CHERRY 14C

GF 4L MANHATTAN 224R

Dam: MEADOW-LANE 224R4P SONORA 9S

MEADOW-LANE 5K PANDORA 4P
WILSONS 414H KENTLINE 5K
OLTN 17D HELENA 15H

EPDs
BW 3.7
WW 47
YW 77
MM 14.5
TM 38

Wendy is a deep, dark heifer. A look at both the 1W and her pedigree will show you a great growth and maternal background. Wendy is halter broke for your added convenience.

Bred to Elm-Lodge Next Big Thing 3N March 30th

Exposed to Loon-Point Valour 1W from May 4th to August 31st

Consigned by: LOON POINT HEREFORDS

31

C02923936 DDLK 6U 29/09/2008 (Bred Female)

MEADOW-LANE 7R UNIC 18M 6U



REMITALL OLYMPIAN ET 262L
Sire: WILSONS 262L ROCKET 1M 7R
 WILSONS 10H MISTY 14C 1M

REMITALL GOVERNOR 236G
 REMITALL CATALINA 24H
 MSU STAR HEADLINER
 WILSONS A23 CHERRY 14C

REMITALL FOUNDATION 46F
 GOLD-WING 2Z RAIDERETTE 60F

WILSONS 46F KIMMIT 3K
Dam: WILSONS 3K MONICA 5J 18M
 WILSONS 19D JENNIE 05J

MSU STAR HEADLINER
 WILSONS A23 CHERRY 14C

REMITALL FOUNDATION 46F
 GOLD-WING 2Z RAIDERETTE 60F

WILSONS 46F KIMMIT 3K
 NJW 1Y WRANGLER 19D
 WILSON'S 824X BELLE 27B

EPDs
 BW 5.6
 WW 49
 YW 81
 MM 13.4
 TM 38

This heifer is out of a long, deep bodied, heavy milking cow that has been a consistent producer every year. Her dad "7R" had a 937 lbs adj weaning wt. We feel comfortable selling this heifer as we are retaining her mom and her two sisters in the herd. Exposed to Meadow-Lane 4L31P Uncle 2U March 25 to May 27/2010. Meadow-Lane 4L31P Uncle 2U EPDs BW 6.7 WW 53 YW 91 MM 21 TM 47
Consigned by: DONALD & DIANE HARDING

32

C02923935 DDLK 5U 22/09/2008 (Bred female)

MEADOW-LANE 7R UNEXPECTED



REMITALL OLYMPIAN ET 262L
Sire: WILSONS 262L ROCKET 1M 7R
 WILSONS 10H MISTY 14C 1M

REMITALL GOVERNOR 236G
 REMITALL CATALINA 24H
 MSU STAR HEADLINER
 WILSONS A23 CHERRY 14C

STAR EDGERTON MKS TJH
 LLO-VAL MISS SUPREME 5C

WILSONS JET STAR 1J
Dam: WILSONS 1J PEACHES 18J 16L
 WILSONS 20G JESSICA 18J

MSU STAR HEADLINER
 WILSONS A23 CHERRY 14C

STAR EDGERTON MKS TJH
 LLO-VAL MISS SUPREME 5C

WILSONS JET STAR 1J
 WILSONS 3E GEMINI 127D 20G
 MOR-LEA MISS KNIGHT 1Y

EPDs
 BW 2.4
 WW 35
 YW 63
 MM 7.3
 TM 25

This heifer by our Remitall Olympian son "Wilson's 262l Rocket 1M 7R" and out of a hard working, heavy milking Jet Star daughter, is long and thick with great udder development. Exposed to the Maddux son "Meadow-Lane 4L31P Uncle 2U" March 25 - May 27.
Consigned by: DONALD & DIANE HARDING

33

C02915815 TBCC 204U 04/02/2008 (Bred Female)

TBCC DIXIE STYLE 204U



STAR MKS LIMELIGHT 288G
Sire: BNC 288G TWICE DIXIE 219R
 STAR MKS KKH 12G DIXIE 108N

STAR L1 TEXACO 1ET
 DLR MISS DIXIE 143B
 HAROLDSON'S PRINGLE 20X 12G
 STAR MKS DIXIE 252H

JMS VICTOR 44B R21
 BOYD BROWN EYES 21A

SKY BNC R21 TOBASCO 32H
Dam: SLAPSHOT 32H STYLE 303L
 STAR STYLIST 45J

STAR L1 TEXACO 1ET
 DLR MISS DIXIE 143B

HAROLDSON'S PRINGLE 20X 12G
 STAR MKS DIXIE 252H

JMS VICTOR 44B R21
 BOYD BROWN EYES 21A

SKY BNC R21 TOBASCO 32H
 STAR EDGERTON MKS TJH
 HHR MS STYLIST 134

EPDs
 BW 4.0
 WW 43
 YW 63
 MM 12.2
 TM 34

We purchased this heifer from Brandon Goodine at the "Atlantic Bonus Sale". She is an easy going heifer with a beautiful, productive udder, as evidenced by the daughter at her side. Exposed to our Maddux son "Meadow-Lane 4L 31P Uncle 2U Mar. 30 - May 27/2010."
Consigned by: DONALD & DIANE HARDING

33a) applied DDLK 1X Feb. 9/2010 (Open Female)
Meadow-Lane 2U204U Xena 1X



REMITALL NATION WIDE ET 93N
Sire: WILSONS 93N REFEREE 8L 12R
 WILSONS 7G ROSE 14C 8L
 REMITALL KEYNOTE 20X
 REMITALL CATALINA 24H
 KMHF 75A HALSTON 7G
 WILSONS A23 CHERRY 14C

EPDs
 BW 3.6
 WW 46
 YW 67
 MM 13.6
 TM 37

This heifer by the Remitall Nation Wide son "Wilson's 93N Referee 8L 12R", looks like she should be like her mama, an easy going productive girl.

Consigned by: **DONALD & DIANE HARDING**

34 C02928931 YDE 19W 18/04/2009 (Bred female)
WILSONS 12R JULIE 3P 19W



REMITALL NATION WIDE ET 93N
Sire: WILSONS 93N REFEREE 8L 12R
 WILSONS 7G ROSE 14C 8L
 REMITALL KEYNOTE 20X
 REMITALL CATALINA 24H
 KMHF 75A HALSTON 7G
 WILSONS A23 CHERRY 14C

EPDs
 BW 2.5
 WW 50
 YW 84
 MM 16.2
 TM 41

NEWTREND 10H HEMLOCK 23M
Dam: WILSONS 23M CHERRY II 1M 3P
 WILSONS 10H MISTY 14C 1M
 NPH 512 THE STOCKER 10H
 SCHIEHALLION PRICELESS 807E
 MSU STAR HEADLINER
 WILSONS A23 CHERRY 14C

This one catches the eye of all visitors. Actual wt on May 24 was 950 lbs. Well marked, certainly a Junior show prospect.
 Exposed to MHPH Star 101S Wager 1013W from May 24 till July 31.
 Will be preg checked.

Consigned by: **VANCE W WILSON**

35 C02928934 YDE 14W 08/04/2009 (Bred Female)
WILSONS 4T MARY 9R 14W



FCC 36N ABSOLUTE 7R
Sire: THCF ONONDAGA SKY 4T
 THCF ONONDAGA SKYE 10P
 HF 4L BEYOND 36N
 FCC 035J MINDY 11M
 REMITALL HERITAGE 89H
 MAY'S NATASHA Y131 518J

EPDs
 BW 5.3
 WW 44
 YW 68
 MM 11.9
 TM 34

KIMBROOK CASANOVA 2M
Dam: REMSHEG CAS APPLE 9R
 FUNDYVIEW SHULIE 412J
 REMITALL HOLLYWOOD 37H
 SPR PEACHES 1E
 DS Y168 VALENTINO 1C
 MAY GV JABOTE 127B

This fancy young lady "A Junior show prospect". Had an ADJ YW of 901 lbs, the kind of growth we strive for.
 Exposed to MHPH Star 101S Wager 1013W from May 24 till July 31.
 Will be preg checked.

Consigned by: **VANCE W WILSON**

36 C02928929 YDE 13W 07/04/2009 (Bred Female)
WILSONS 12R BILLIE 2N 13W



REMITALL NATION WIDE ET 93N
Sire: WILSONS 93N REFEREE 8L 12R
 WILSONS 7G ROSE 14C 8L

REMITALL KEYNOTE 20X
 KMHF 75A HALSTON 7G
 WILSONS A23 CHERRY 14C

REMITALL HIGHWAY ET 157H
Dam: BAKER'S NAOMI 2N
 CHB CROW HARBOUR GEM 8G

REMITALL KEYNOTE 20X
 TOWER-CREEK AMBER 6B
 MSU OPTIMUM Z03
 CHB CROW HARBOUR ELSIE 11E

EPDs
 BW 4.4
 WW 60
 YW 101
 MM 18.4
 TM 49

This young lady has a super dam. Should be a first choice. Has exceptional growth and style to be a winner in the show ring.
 Exposed to MHPH Star 101S Wager 1013W from May 24 till July 31.
 Observed bred May 27. Will be preg checked.
Consigned by: VANCE W WILSON

37 C02928937 YDE 12W 07/04/2009 (Bred female)
WILSONS 12R ALICE 28R 12W



REMITALL NATION WIDE ET 93N
Sire: WILSONS 93N REFEREE 8L 12R
 WILSONS 7G ROSE 14C 8L

REMITALL KEYNOTE 20X
 KMHF 75A HALSTON 7G
 WILSONS A23 CHERRY 14C

BNC 29F REPLICA ET 201M
Dam: WILSONS 201M SCARLET 103J 28R
 BARRONS PEACHES 2Z 1G

BNC 110G CHAMPAGNE 103J
 BNMHPH D61 MERIDIAN 110G
 BNC 18C CHAMPAGNE 901F

EPDs
 BW 4.4
 WW 53
 YW 88
 MM 19
 TM 46

Alice has the pedigree to be a great one. Her dam has an index of 107.7 on three heifers. Qualifies for Dam of Distinction.
 Exposed to MHPH Star 101S Wager 1013W from May 24 till July 31.
 Will be preg checked.
Consigned by: VANCE W WILSON

38 C02928925 YDE 6W 26/03/2009 (Bred Female)
12R GAIL 05J 6W



REMITALL NATION WIDE ET 93N
Sire: WILSONS 93N REFEREE 8L 12R
 WILSONS 7G ROSE 14C 8L

REMITALL KEYNOTE 20X
 KMHF 75A HALSTON 7G
 WILSONS A23 CHERRY 14C

NJW 1Y WRANGLER 19D
Dam: WILSONS 19D JENNIE 05J
 WILSON'S 824X BELLE 27B

CIRCLE-D WRANGLER 832W
 NJW FROSTY 1Y
 WILSONS KNIGHT HAW 824X
 JOMABER BLUEBELL 20L 26P

EPDs
 BW 3.0
 WW 49
 YW 87
 MM 15.2
 TM 40

A super heifer. "Showy" as well as growthy. Off test May 24 at 1075 lbs.
 Exposed to MHPH Star 101S Wager 1013W from May 24 till July 31.
 Observed bred May 25. Will be preg checked.
Consigned by: VANCE W WILSON

39

C02928932

YDE 2W

06/03/2009 (Bred Female)

WILSONS 119N GOLDIE 4P 2W



ENFORCER 107H

Sire: GOLD-BAR GODFATHER 107H 119N

MISS ADVANCE SUPREME 12K

WSF PRL JUSTA BANNER

LADY KAY LEONARD

WOODROW SUPREME 6E
MISS MISCH ADVANCE 32F

EPDs

BW 4.5

WW 38

YW 65

MM 11.5

TM 31

FCC 60G MADDUX 4L

JSF 23 NIBBS 60G

SVR 15D JADE 554G

Dam: WILSONS 4L PRINCESS 6J 4P

WILSONS 7G JANE 6J

KMHF 75A HALSTON 7G

WILSONS A23 CHERRY 14C

This one has the genetics to be a great producer. Dark colour, short marked - one of a kind!

Exposed to MHPH Star 101S Wager 1013W from May 24 till July 31.

Will be preg checked.

Consigned by: VANCE W WILSON

40

C02868217

YDE 26R

24/05/2005 (Bred female)

WILSONS 201M ROBIN 15F 26R



CS BOOMER 29F

Sire: BNC 29F REPLICA ET 201M

BARRONS PEACHES 2Z 1G

REMITALL BOOMER 46B

CS MISS 1ST FLAG 21A

HAROLDSON'S RAIDER P183 ET 2Z

KILMORLIE 75A PEACHES 576C

EPDs

BW 5.2

WW 43

YW 81

MM 12.6

TM 34

MHPH 926Y REBEL 109D

DR P183 REBEL 926Y

WILSONS 7Y RUSH ELLE 2B

Dam: WILSONS 109D CASSIE 20C 15F

WILSONS 019Z CASSANDRA 20C

WILSONS GK RACE SUPREME 019Z

BNMHPH MS KNIGHT RYD 210Y

A highly productive young cow we part with along with her heifer calf. "Features in most sale" 26R has excellent EPDs and proof of production.

Exposed to MHPH Star 101S Wager 1013W from May 24 till July 31.

Will be preg checked.



MHPH Star 101S Wager 1013W

40a)

C02940844

YDE 6X

10/04/2010 (Open Female)

WILSONS 4T ROBBY 6X



CS BOOMER 29F

Sire: GF 29F NEW RELEASE 1025R

BNC CS OL GRACE ET 927N

REMITALL BOOMER 46B

CS MISS 1ST FLAG 21A

REMITALL ONLINE 122L

DLR MISS DIXIE 143B

EPDs

BW 6.0

WW 51

YW 91

MM 16.6

TM 42

This young heifer has the breeding to be both show prospect and front pasture.

Consigned by: VANCE W WILSON

NOTES

IMPORTANT MEMO

Date: June 15, 2010

To: NB Beef Producers

Re: Financial Assistance Available for Improving Beef Herd Genetics

From: NB Dept. of Agriculture & Aquaculture Regional Office

Once again this year, the department is offering financial assistance for NB beef producers wanting to improve their herds.

The NB Livestock Genetic Enhancement Initiative is being made available to help beef producers select and procure younger genetically superior animals.

Beef producers can receive financial assistance for the following animals.

- Financial assistance for retaining and/or purchasing bred replacements heifers (Beef Herd Renewal Component)
- Financial assistance towards the purchase of genetically superior bulls, cows & embryos (new) (Elite Sires Component, Elite Cow Component & Elite Embryo Component)
- Financial assistance for evaluating bulls at test stations (Elite Sires Component)

Important Dates to Remember

1. Application deadlines for the Beef Herd Renewal Component is ***November 30, 2010***.
2. Application/Claim deadline for the Elite Sire, Elite Cow and Elite Embryo Components is ***February 28, 2011***.

For more details about this Initiative, please contact your nearest regional NBDAA office. Guidelines and Applications are available on the NBDAA web site: www.gnb.ca/agriculture and select : Livestock Genetic Enhancement Initiative 2010.

For more information call:

James Blackie, Regional Livestock Development Officer at 506-392-5100

TERMS AND CONDITIONS

TERMS - The terms of the sale are cash or cheque payable at par at sale location unless satisfactory credit arrangements have been made prior to the sale. The right of property

shall not pass until after settlement is made. Down East Hereford Sale reserves the right to require a certified cheque as settlement before releasing any sale cattle. Should the purchaser fail to settle for his purchase, Down East Hereford Sale reserve full power to resell the animal to the best advantage either publicly or privately, without further notice. Any loss arising from such resale together with keep and all other expenses shall be payable by the defaulter. All settlements must be made with the clerks of the sale before any cattle will be released. The owners, Down East Hereford Sale and sales staff have the right to refuse bids from anyone who has a previous record of default in payment and or who has not made prior credit arrangements, prior to the sale with the owners and or Sales Management.

BID - Every animal consigned to the sale must be sold by auction. No by-bidding will be permitted. Each animal will be sold to the highest bidder.

DISPUTES - In cases of disputes, bidding will be reopened between the parties involved. If no further bid is made the buyer will be the person from whom the auctioneer accepted the last bid. The auctioneer's decision in such matters will be final.

PURCHASER'S RISK - Each animal becomes the risk of the purchaser as soon as sold

ANNOUNCEMENTS from the auction block will take precedence over printed matter in the catalogue. Buyers are therefore cautioned to pay attention to any such announcements.

CERTIFICATE OF REGISTRY - The proper Registration or Recordation paper, as the case may be, will be duly transferred and furnished to the buyer for each animal after settlement has been made.

SHIPPING - Assistance will be given in making shipment after the sale but no risk is assumed by Sales Management or Seller. Expenses incurred are the responsibility of the purchaser. Purchasers are requested to furnish shipping instructions when making settlement.

GUARANTEE - All animals will carry standard breeding guarantee as specified by the Canadian Hereford Association. At no time shall the seller's liability exceed the purchased price of the animal.

EXCEPTION TO GUARANTEE - In cases where the animal is subjected to any hormonal or surgical reproduction techniques after the sale, the guarantee shall be null and void. In the cases of bulls, they are guaranteed to breed naturally according to Canadian Hereford Association Guarantee but no guarantee is given that semen from any bull will freeze.

HEALTH - All animals will have passed the required tests as determined by Agriculture Canada at sale location. It is the buyer's responsibility to determine health requirements for importing any animal into his province or state. Down East Hereford Sale assumes no responsibility for the health status of any animal in the sale.

ACCIDENTS - Although every precaution will be taken to protect the safety and comfort of buyers, neither the Sales Management, auctioneer, or Association assumes any responsibility in this matter and disclaims any liability legal or otherwise in the event of accident or loss of property.

RIGHTS AND OBLIGATIONS - The above terms and conditions of the sale shall constitute a contract between the buyer and the seller and be equally binding to both. Resale of animals following purchase in this sale shall constitute a separate transaction and the rights and obligations of the two parties connected thereto are not covered by the terms and conditions of this sale.

DOWN EAST HEREFORD SALE IS AN AGENT ONLY - It is clearly understood that Down East Hereford Sale, acts only as agent between buyer and seller and is not in any way responsible for any failure by either party to live up to his or her obligations. Down East Hereford Sale does not assume any financial obligations to collect or enforce collection of moneys by either parties, and in exceptional case, any legal action will be between buyer and seller. Down East Hereford Sale has no ownership of the facility and assumes no responsibility for the operation of said facility.

Thanks for Coming...

