

Ottawa Valley Angus Club

Classic Sale



June 1, 2013

1:00 PM

Selby Livestock & Auctions Centre

Napanee, ON

Breed Leading Genetics



SANKEY'S JUSTIFIED 101
2013 NWSS CHAMPION BULL



DAJS SHOCKWAVE 612
2011 NWSS CHAMPION BULL



EXAR FORTIFY 1447B
2012 RAWF FAIR CHAMPION BULL

Flush Sires Used
Soo Line Motive
Gambles Hot Rod
Dameron First Class
Dameron First Impression

Donors
Vos Vegas Dixie Erica 5z
Vos Vegas Erica L555
Triara Rita 228z
Exar Queen Idelette T439
Soo Line Annie K 2087
Soo Line Annie K 1094

VOS VEGAS
Farms
"Quality You Can BET On"

ANDY VOS 613-849-9008 **PETER VOS 613-922-9522**

2793 Harmony Rd RR 1 Corbyville, ON K0K 1V0

Ottawa Valley Angus Club Presents the
Classic Sale

June 1, 2013 at 1:00pm
Selby Livestock and Auction Center

AUCTIONEER

Tom Harrison Jr, 613-379-1006

RINGMEN

Al Argue 613-832-3494

Billy Elmhirst 705-761-0896

VIEW CATALOGUE ONLINE

www.indianrivercattlecompany.com

SALE CONSULTANT

Rob Foubert 613-258-1062

Norm James 613-267-6192

SALE MANAGEMENT

Indian River Cattle Co

Billy's cell: 705-761-0896

Juanita's cell: 705-772-2697

SALE DAY PHONE

Sales Barn: 613-354-6260

ACCOMMODATIONS

Hampton Inn by Hilton Napanee

40 McPherson Drive, Greater Napanee, ON

(613) 354-5554

www.hamptoninn.hilton.com

LUNCH

Lunch will be available

LOADING OUT

No cattle load out until after the conclusion of the sale

DELIVERY

Consignors will assist in organizing trucking.

OTTAWA VALLEY ANGUS CLUB

President: Doug Fisher 613-838-3911

Vice President: Rob Foubert 613-258-1062

Secretary: Kevin MacIntyre 613-445-0506

Treasurer: Carolyn Milne-Smith 613-223-1692

Directions to the

Selby Livestock & Auction Center

11 Pleasant Drive

Selby, Ontario

From Highway 401:

- Exit at 579.
- Head North on Highway 41 for 2 miles.
- On the right is Selby Livestock & Auctions Centre.



Consignors	Lots
Bellstar Angus - George Bell 613-284-2475	1,2,18,37,42
D&K Angus - Darryl Faught 613-312-2007	4, 5
Donovandale Farms - Keitha Donovan 613-257-2617	3, 35
Enright Farms - Barry Enright 613-649-2313	32, 34
Esker View Acres - Dan Findley 613-489-0016	44
Glen Isle - Matt Glen 705-295-1527	15, 48
Hawthorne Farm - Barry Stewart 613-989-6038	27, 33
Jamesview Farms - Norm James 613-267-6192	28, 29
Leela Farms - John / Harry Leeftang 613-267-4429	8, 9, 19, 20, 41
Southshore Farms - David Bates 705-887-6420	50-61
Sunset Acres - Rob Foubert 613-258-1062	36, 46
Timber Trail Angus - Doug Fisher 613-838-3911	16, 17, 30, 31, 39, 40, 45, 47, 49
Upper Glen Angus - Rick Stull 905-703-0503	6, 7, 26, 38
Valley View Farm - Dwayne Miller 613-476-2383	10 - 14
Vos Vegas Farms - Andy/Peter Vos 613-848-9008	21 - 25
Worth-More Cattle Co. - Kyle Petherick 705-653-4597	43

Bellstar1

Bellstar Alice 3Z

Black Female GLBF 3Z 1663908 04/01/2012

Sire: HF TIGER 5T

{ HF KODIAK 5R

{ HF ECHO 84R

Dam: JL MS ALICE 8079

{ S A V FOUR SEASONS 5231

{ HOWE MS ALICE 155N

"Bellstar Alice is a really nice heifer out of Tiger 5T. Its really difficult for us to let this heifer go as she is out of a no miss dam.

Alice is bred March 23 /2013 to **SAV Density Sexed Semen.** "

Bellstar2

Bellstar Rosebud 5Z

Black Female GLBF 5Z 1663910 15/01/2012

Sire: S A V PROSPERITY 9131

{ S A V PROVIDENCE 6922

{ S A V EMBLYNETTE 3123

Dam: MVF ROSEBUD 71X

{ HF TIGER 5T

{ LENLOOK ROSEBUD 30G

Bellstar Rosebud is a fancy Prosperity heifer out of a strong Tiger Cow from Mountain View Farms.

She is bred to the **Hoover Dam** bull on April 16, 2013.

Donovandale Farms3

Donovandale Black Poppy

Black Female DONO 02Z 1659965 21/02/2012

Sire: NICHOLS STOUT T152

{ NICHOLS COMMITMENT M380

{ NICHOLS LULA N77

Dam: KILMAURS DELIA 2U

{ KBJ CONQUOR ALL 442M

{ MJLC DELIA 43S

Black Poppy is a February 21st yearling heifer out of Nichols Stout T152. Her Dam is a Western bred cow selling as lot 35. If she follows in her mother's footsteps she will make an easy doing brood cow.

4

D & K Angus

D & K Miss Ginselle 015Z

Black Female DFFD 015Z 1691621 20/02/2012

Sire: BELVIN ICE 19'10

{ HF KODIAK 5R

{ BELVIN LADY BLOSSOM 40'01

Dam: BELLSTAR EMPRESS 15X

{ WOODHILL FORESIGHT

{ JUSTAMERE 234R EMPRESS 302U

Nice framed heifer, out of a Woodhill Foresight daughter, and again sired by Belvin Ice 19'10 out of there Lady Blossom cow

EPDs

BW 2.7 WW 45 YW 79 MM 18 TM 41 CE 4.0

5

D & K Angus

D & K Miss Weizs 44Z

Black Female DFFD 44Z 1691624 19/02/2012

Sire: BELVIN ICE 19'10

{ HF KODIAK 5R

{ BELVIN LADY BLOSSOM 40'01

Dam: D & K MISS KALI 44X

{ S A V 004 CAPACITY 5234

{ CRF BLACKBIRD 32R

Nice uniformed heifer out of a SAV 004 Capacity daughter, and sired by a Kodiak 5R son, Belvin Ice 19'10

EPDs

BW 3.3 WW 43 YW 72 MM 14 TM 36 CE 4.0



BELVIN ICE 19'10

Upper Glen Angus

6

Upper Glen Grand June

Black Female UG 20Z 1700221 24/02/2012

Sire: PVF WINDFALL SCC 9005

{ PVF ALL PAYDAY 729

{ DAMERON PVF PROVEN QUEEN 010

Dam: BRY MISS TREND 39M

{ BRY MR NEW TREND 14J

{ BRY MISS STOCKMAN 8H

February yearling by Windfall from a good cow family she is a thick topped type of individual.
Will make a good brood cow.

Should be bred **Gameday** by sale date.

Upper Glen Angus

7

Upper Glen Rosilla 18Z

Black Female UG 18Z 1700219 08/02/2012

Sire: PVF WINDFALL SCC 9005

{ PVF ALL PAYDAY 729

{ DAMERON PVF PROVEN QUEEN 010

Dam: UPPER GLEN ROSILLA 3W

{ S A V FINAL ANSWER 0035

{ JUSTAMERE 9946 ROSILLA 387N

A February PVF Windfall yearling with a nice pedigree. She will make a real good cow, her dam is an excellent miker.

Bred AI to **Gameday** April 16th



PVF WINDFALL SCC 9005



Leela Farms

Leela Eagle Rosa 30Z

Black Female LELA 30Z 1662706 15/04/2012

Sire: BC EAGLE EYE 110-7

{ B C LOOKOUT 7024
{ B C PURE PRIDE ERICA D 110
{ BON VIEW NEW DESIGN 878
{ RED WWF ROSA 169M

Dam: WWF DESIGNER ROSA 33P

Open, or will be short bred by sale date.

EPDs

BW 1.7 WW 52 YW 95 MM 17 TM 43 CE 5.0



Leela Farms

Leela Nadine 12Z

Black Female LELA 12Z 1662717 20/01/2012

Sire: BC EAGLE EYE 110-7

{ B C LOOKOUT 7024
{ B C PURE PRIDE ERICA D 110
{ SOO LINE KODIAK 8045
{ DIAMOND T TIBBIE - 095 14'08

Dam: D & K MISS NADINE 14X

Open, or will be short bred by sale date.

EPDs

BW 4.7 WW 65 YW 112 MM 24 TM 57 CE -1.0



BC EAGLE EYE 110-7

10

Andrew Miller & Dwayne Miller

Pine View Blackbird ANDM 6Z

Black Female ANDM 6Z 1709634 18/03/2012

Sire: S A V PIONEER 7301

{ S A V FINAL ANSWER 0035

{ S A V BLACKBIRD 5297

Dam: PINE VIEW BLACKBIRD ANDM 1X

{ S A V ADAPTOR 2213

{ ROYAL BLACKBIRD DRCC 7001T

S A V PIONEER 7301



11

Andrew Miller & Dwayne Miller

Pine View Blackcap ANDM 16Z

Black Female ANDM 16Z 1713015 28/04/2012

Sire: HARRON HOGAN 7U

{ LEACHMAN RIGHT TIME

{ HARRON QUEEN MOTHER 18J

Dam: SUNSET BLACKCAP 9X

{ S A V PIONEER 7301

{ SUNSET BLACKCAP 13U

12

Andrew Miller & Dwayne Miller

Pine View Blackbird ANDM 10Z

Black Female ANDM 10Z 1713998 29/03/2012

Sire: HARRON HOGAN 7U

{ LEACHMAN RIGHT TIME

{ HARRON QUEEN MOTHER 18J

Dam: ROYAL BLACKBIRD DRCC 7001T

{ ALBERDA TRAVELER 416

{ ROYAL BLACKBIRD DRCC 4016P

13

Andrew Miller & Dwayne Miller

PINE VIEW LUCY ANDM 8Z

Black Female ANDM 8Z 1709635 23/03/2012

Sire: GDAR GAME DAY 449

{ BOYD NEW DAY 8005

{ G D A R MISS WIX 474

Dam: MVF LUCY 243X

{ S A V PIONEER 7301

{ B&G LUCY 704T

GDAR GAME DAY 449



14

Andrew Miller & Dwayne Miller

Pine View Lady Pride ANDM 9Z

Black Female ANDM 9Z 1709636 29/03/2012

Sire: S A V FINAL ANSWER 0035

{ SITZ TRAVELER 8180

{ S A V EMULOUS 8145

Dam: ELMGROVE LADY PRIDE 3X

{ HAWTHORNE NET WORTH 10T

{ LLB LADY PRIDE 343P



S A V FINAL ANSWER 0035



Matt Glenn

15

Glen Isle Rosalene 231Z

Black Female GIFL 231Z 1707424 09/02/2012

Sire: JPD PIONEER 1X

{ S A V PIONEER 7301

{ J P D BLACKCAP 4U

Dam: JUSTAMERE 9946 ROSILLA 387N

{ GREENS CARHARTT

{ JUSTAMERE 66F ROSILLA 645K

"Bred AI to Connelly Concise 1304B on April 19th.

Exposed to Hawthorne Widespred 24Y.

"Big ribbed cow prospect out of the rock solid Rosilla cow family from the prominent Justamere Ranch in Saskatchewan.

Timber Trail Angus

16

Timber Trail Annie 1Z

Black Female TMBR 1Z 1694361 03/01/2012

Sire: DUFF NEW ATTRACTION 6110

{ O C C GENESIS 872G

{ O C C DIXIE ERICA 814G

Dam: J D ANNIE 21W

{ TC STOCKMAN 365

{ VBR ANNIE K 145J

Deep bodied New Attraction Female out of a tremendous 365 JD cow. Very quiet halter broke.

Bred to **(Sexed) Density** on April 10/13.

17

Maple Line Eileen 9Y

Black Female IRA 9Y 1628444 07/02/2011

Sire: HEATHCOTE DATELINE 523

{ CONNEALY DATELINE

{ WATCHWIND VELURE LASS 166

Dam: CURRAGHDALE EILEEN 29P

{ STEVENSON BRUNO 561G

{ DIAMOND RIVER IRENE EILEEN 18E

Long bodied, good milking two year old doing a nice job on her JL Four Seasons **bull calf** born April 3rd. She will be bred back to **Just Enough New Edition Edgar** by sale day. Breeding date will be available on sale day.

EPDs

BW 3.2 WW 37 YW 64 MM 19 TM 38 CE 4.0

Bellstar

18

Timber Trail Annie 8Y

Black Female TMBR 8Y 1600617 20/01/2011

Sire: MYTTY IN FOCUS

{ S A F FOCUS OF E R

{ MYTTY COUNTESS 906

Dam: J D ANNIE 21W

{ TC STOCKMAN 365

{ VBR ANNIE K 145J

Mytty In Focus Cows are hard to find. She has a heifer calf by Prosperity at side. What a Package Here. Bred **Significant**, April 16, 2013.

"Bellstar Annie 10A" **Heifer Calf** ,GLBF 10A,

Sire: SAV Prosperity 9131, Registration 1637313 DMF CAF"



MYTTY IN FOCUS



SAV Prosperity 9131

19

Leela Farms

Leela Black Beauty 7Y

Black Female LELA 7Y 1605477 07/01/2011

Sire: BC EAGLE EYE 110-7

{ B C LOOKOUT 7024
 { B C PURE PRIDE ERICA D 110
 { S A V NET WORTH 4200
 { KBJ BLACK BEAUTY 586N

Dam: LEELA BLACK BEAUTY 23U

Bull calf sired by KG SMART ONE 9116 born
 Jan 1/13. (LELA 1A) BW: 78 lbs

Bred AI to **SAV Brand Name 9115** on
 April 10/13

EPDs
 BW 3.6 WW 57 YW 97 MM 23 TM 52 CE 1.0



SAV Brand Name 9115

20

Leela Farms

Leela Queen Ruth 14Y

Black Female LELA 14Y 1654482 14/01/2011

Sire: S A V HERITAGE 6295

{ CAR DUKE 104
 { S A V BLACKCAP MAY 4136
 { DWAJO CHIEF 92E
 { CRESCENT CREEK QUEEN RUTH 148H

Dam: CRESCENT CRK QUEEN RUTH 0123M

Bull calf sired by KG SMART ONE 9116
 born Jan 3/13. (LELA 6A) BW: 90 lbs

Will be bred by sale day.

EPDs
 BW 3.4 WW 53 YW 93 MM 19 TM 46 CE -4.0



S A V HERITAGE 6295

21

Vos Vegas Alley

Black Female VOS 2Y 1641851 11/02/2011

Sire: JUSTAMERE 406S PANAMAJACK 336U } JUSTAMERE 253 BADA BING 406S
 { EXAR EMPRESS 2429

Dam: ANGUS HILLS ELINE ERICA 8U } S A V PEACEMAKER 3179
 { ANGUS HILLS ELINE ERICA 6N

Vos Vegas Alley, another impressive show heifer out of Panamajack and combined with the Erica family. She's also bred back to the NWSS Champion **Shockwave** on March 28/13.

Peter Vos & Andy Vos

22

Vos Vegas Annabelle

Black Female VOS 4Y 1642425 16/02/2011

Sire: JUSTAMERE 406S PANAMAJACK 336U } JUSTAMERE 253 BADA BING 406S
 { EXAR EMPRESS 2429

Dam: BAILEY ACRES VICKY 4S } B C C-J C L EMBLAZON 038-287
 { BAILEY ACRES VICKY 47P

Vos Vegas Annabelle was our show heifer calf in 2011 and is sired by Panamajack the Res. Champion NWSS Bull in 2012.

Bred AI to **Shockwave** on April 14/13.



JUSTAMERE 406S PANAMAJACK 336U

23

Vos Deb Girl 9X

Black Female VOS 9X 1592398 05/05/2010

Sire: BAILEY ACRES TWISTER 15U

{ BAILEY ACRES TWISTER 1S
TAMBRI DAISY 10P

Dam: HAWTHORNE ERICA 5T

{ BON VIEW NEW DESIGN 878
HAWTHORNE ERICA 12R

Here's a 3 year old with a **heifer calf** sired by the Senior Champion Bull at the Royal Winter Fair; Triara Windsor 368W. Her 2012 calf sold at the Royal to French River cattle Co. for \$3900. 9X will be bred back prior to sale day to the reigning National Champion Bull, EXAR Fortify 14423.

24

Curraghdale Erica 8X

Black Female CCCC 8X 1555264 02/01/2010

Sire: S A V PIONEER 7301

{ S A V FINAL ANSWER 0035
S A V BLACKBIRD 5297

Dam: CURRAGHDALE ERICA 30U

{ S A V NET WORTH 4200
CURRAGHDALE ERICA 32R

8X sells with a fancy heifer calf at side born Jan. 16/2013 by the Ontario Show Bull of the Year and Royal Senior Champion Bull, Triara Windsor 368W. This young cow is bred back to the Canadian National champion Bull EXAR Fortify on April 9/2013

25

JL Evening Tinge 0307

Black Female JLMB 307X 1594049 25/02/2010

Sire: S A V BISMARCK 5682

{ G A R GRID MAKER
S A V ABIGALE 0451

Dam: HF EVENING TINGE 57R

{ HF FREE WHEELER 191N
HF EVENING TINGE 68H

Our donor cow in 2012, Evening Tinge is out of the \$20000 from Johnson Livestock. She is bred back April 9th to the National Western Champion Bull DAJS Shockwave . Shockwave sired our \$16000 (1/2 interest) hi selling Dixie Erica heifer that sold to Enright Farms in 2012. EPDs

BW 1.9 WW 47 YW 73 MM 29 TM 52 CE 6.5

26

Upper Glen Black Mercedes 22X

Black Female UG 22X 1567290 23/05/2010

Sire: UPPER GLEN SIRIUS BLACK 8T

{ W C C SPECIAL DESIGN L309
BRANTNOR'S ERROLINE 5N

Dam: UPPER GLEN BLACK MERCEDES 3U

{ C A FUTURE DIRECTION 5321
HCC BLACK MERCEDES 13N

Black Mercedes 22X is a heavy milking right made young cow. Her Grand Dam is the great Donor cow at Gilchrist Farms HCC Black Mercedes 13N. Prodceny are sought after she has a fancy Bismarck **heifer calf** born March 4th at side.

She will be bred to **Traveler 416** by sale day.



HCC BLACK MERCEDES 13N

27

Hawthorne She Daisy

Black Female RBB 6X 1578433 02/02/2010

Sire: B C LOOKOUT 7024

{ O C C LEGEND 616L
GIBBET HILL MIGNONNE E37
BON VIEW NEW DESIGN 878
SUNSET SHEDAISSY 4K

Dam: SUNSET SHEDAISSY 1N

She Daisy's mother has been the corner stone of my herd for year's. Hawthorne She Daisy was was 2nd at the RAWF as a 2 year old.

Bull calf sired by SAV Brilliance born on Jan. 25/13.

Bred AI to **Coleman's Regis** on April 8/13.

EPDs

BW 2.4 WW 49 YW 85 MM 21 TM 45 CE 6.0



Coleman's Regis

Norm James

28

Jamesview Eulima 2X

Black Female NJ 2X 1556944 01/01/2010

Sire: BON VIEW NEW DESIGN 878

{ B/R NEW DESIGN 036
BON VIEW GAMMER 85
{ B/R NEW FRONTIER 095
LLB EULIMA 48H

Dam: JAMESVIEW EULIMA 4U

A good milky 3 year old with a stylish **heifer calf** (NJ 46A) sired by Jamesview Final Answer 10Y, born February 15, 2013.

EPDs

BW 2.7 WW 40 YW 74 MM 23 TM 43 CE 4.0

BON VIEW NEW DESIGN 878



Norm James

29

Jamesview Black Cap 45X

Black Female NJ 45X 1556967 02/05/2010

Sire: DWAJO QUANTUM 55T

{ DOUBLE D QUANTUM 4R
MFA ANNIE K 146J
{ TC FOREMAN 016
LOCUST GROVE BLACKCAP 1P

Dam: SRA BLACKCAP 2S

Just a 3 year old but doing a great job on this Dateline bull calf, these Quantum's sure know how to produce.

Bull calf sired by James Dateline 12X, born Jan. 21/13.

EPDs

BW 3.2 WW 41 YW 77 MM 15 TM 35 CE 1.0

Timber Trail Angus

30

Timber Trail New Horizon 12 X

Black Female TMBR 12X 1583266 02/04/2010

Sire: TMBR NETWORKH'S UNDENIABLE

{ S A V NET WORTH 4200
THOMAS QUEEN 0121
{ P V F NEW HORIZON 001
SSSG NICKY

Dam: TIMBER TRAIL 7T

Perfect uddered 2 year old with Jan 4th Just Enough New Edition Edgar **Heifer calf** at foot. She is doing a great job on first calf. Bred back to calf champion Brampton preview show 2012 **Timber Trail Edgar 3Z** . Due Jan 15th"

31

Barrvalley Raisin

Black Female ABV 55X 1543570 05/01/2010

Sire: DUFF NEW ATTRACTION 6110

{ O C C GENESIS 872G

{ O C C DIXIE ERICA 814G

Dam: CLOVER LANE ROSEBUD 96M

{ DMM DYNASTY 03G

{ STALBURN ROSEBUD 3D

Moderate framed young female with her fancy January **heifer calf** at side. The calf is sired by our Canadian show bull of the year **Just Enough New Edition Edgar**. This three year old is bred back the same way for Jan 1st 2014 .

32

LLB Sandra 265W

Black Female LLB 265W 1554103 10/04/2009

Sire: DRYLAND ICEBERG 411

{ CAR ICEBERG 056

{ CRESCENT CREEK DUCHESS 88E

Dam: LLB SANDRA 139R

{ BELVIN KINGPIN 24'00

{ LLB SANDRA 39J

Nice moderate cow with a fancy heifer calf at side by S A V Bullion 0474. A daughter of 265W is owned by Hawthorne Farms and a maternal sister is owned by Ross Giles. Sells with **heifer calf** (ESE 55A) sired by SAV Bullion 0474 born March 30/13. Bred AI to **Alberda Traveler 416** on April 25/13.

EPDs

BW 4.8 WW 36 YW 60 MM 8 TM 26 CE -3.0

33

Curraghdale Sunset 28W

Black Female CCCC 28W 1490392 13/01/2009

Sire: K C F BENNETT TOTAL

{ SITZ ALLIANCE 6595

{ EXT OF CONANGA 6790

Dam: CURRAGHDALE SUNSET 11T

{ S A V 004 DENSITY 4336

{ CURRAGHDALE SUNSET 20R

Bennett Total cattle are very hard working females. Sunset 28W is a real clean cut female with a great udder. Her 2013 **bull calf** displays alot of performance. Hawthorne Total 5A is sired by SAV Rito 9969 born on January 22, 2013.

Bred AI to **Coleman's Regis** on april 15, 2013.



EF ELBA 2Y

Maternal sister to ESE 16U. Owned by Bellstar Angus

Enright Farms

34

ESE Enchantress 16U

Black Female ESE 16U 1442943 06/01/2008

Sire: S A V PEACEMAKER 3179

{ BON VIEW NEW DESIGN 878

{ S A V ELBA 1094

Dam: HFI 726G ELBA 16R

{ G D A UNIVERSE 726G

{ HFI FULL BACK ELBA 7J

Powerful SAV Peacemaker 3179 cow. A maternal sister is owned by Bellstar Angus. **Bull calf** sired by our top herd sire S A V Bullion 0474 who's first progeny have been remarkable. EF Bullion 36A (ESE 36A) was born February 18/13. BW: 87 lbs. Bred back the same way this 3 in 1 is sure to be a sale feature. Bred Al'd - April 25/2013 to **S A V BULLION 0474**.

Donovandale Farms

35

Kilmaurs Delia 2U

Black Female VAN 2U 1466676 06/02/2008

Sire: KBJ CONQUOR ALL 442M

{ KBJ CONQUOR ALL 447J

{ LLB BLACK BEAUTY 701E

Dam: MJLC DELIA 43S

{ WINDOVER POWER PLAY 47N

{ MJLC DELIA 54N

Delia is a female with tonnes of capacity and sporting a very nice udder. Easy doing sums up this cow. Delia has an F1 Simm/Angus **heifer calf** at side with a blaze face. She lives up to her name Donovanale Flashy Lady. Simm/Angus Heifer calf sired by Donovanale Pol Phoenix reg #746211. DOB: March 29, 2013. Delia 2U is bred to **SAV Providence** on May 6, 2013.

CEDARVIEW ANGUS

Your Source For Quality Angus



Introducing our exciting new herd bull, check him out on the 2013 show circuit.
(Eagle Eye x Widespread)

2013 Calves sired by:

Edgar (Canadian Angus show bull of the year)
Saugahatchee
Stockman 365
MCC Cupid
Kesslers Frontman

2013 Sires used:

Edgar
Saugahatchee
Fullback Style Windfall
Calvary
Cupid

CEDARVIEW ANGUS

Bill and Donna Fulton

Manager: Tyler Fulton

House: 613-256-2824

Cell: 613-859-8957

RAISING ANGUS FOR WHAT'S ALL ABOUT!

SINCE 1967

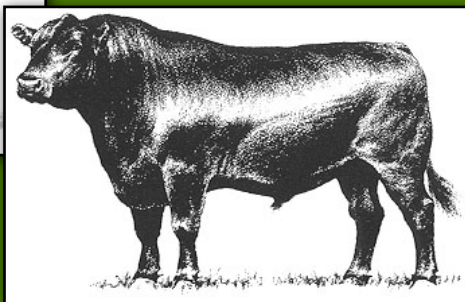
PUREBRED BLACK ANGUS

SOUTH NATION FARMS



Supreme Beef

Superb Sires



Micheal & Beverly Ault

R. R. # 1, Brinston, ON, K0E 1K0

Tel: 613-652-2403

Fax: 613-652-6246

Bulls & Females Always For Sale

*Come to the Nation River Valley and get acquainted with some
Moderate Framed, Supreme Beef Producers*

36

Sunset Acres

Barrvalley Paula

Black Female ABV 16U 1481326 11/02/2008

Sire: S A V NET WORTH 4200

{ S A V 8180 TRAVELER 004

{ S A V MAY 2410

Dam: CLOVER LANE PAMELA

{ CLOVER LANE MCGREGOR

{ STALBURN ZARA 44E

A real nice Network female that milks hard and weans off superior calves year after year. **Heifer calf** (SUF 2A) at foot by TC Aberdeen which extremely stout and good.

S A V NET WORTH 4200

Bred to **Final Product. (Sexed)** on April 15th 2013.

EPDs

BW 3.7 WW 42 YW 81 MM 20 TM 41 CE 1.0



37

Bellstar

Locust Grove Blackbird 10U

Black Female WTM 10U 1430838 12/01/2008

Sire: TC FREEDOM 104

{ CONNEALY FOREFRONT

{ T C RUBY 9095

Dam: LOCUST GROVE CT BLACKBIRD 2F

{ CENTURY TOUCHSTONE 131

{ DODSWOOD HI BLACKBIRD 73A

Blackbird is a cow that consistently produces the good ones. Her Final Answer Daughter Sold to LLB and produced a Sitz Upward **Bull calf** for their 2013 Spring Sale. A Look Out Daughter Sold to D&S Angus. Blackbird will be bred to Connealy Date Line. You will not find this combination anywhere in Canada this year. Her bull calf by Hawthorne Date Line 35W born March 01, 2013 can sure tell you what she is capable of doing."

Bred to **Connealy Dateline**, April 16, 2013.

EPDs

BW 1.9 WW 41 YW 77 MM 22 TM 43 CE 5.0



TC FREEDOM 104

Upper Glen Angus

38

Angus Glen Janice 8U

Black Female SAW 8U 1465430 25/01/2008

Sire: PLAINVIEW SUDDEN IMPACT D27

{ EXAR SUDDEN IMPACT 1537
PLAINVIEW PROUD LASSIE 13A
{ HYLINE RIGHT TIME 338
BURKHOLMES JAN 6H

Dam: ANGUS GLEN JANICE 19S

Nice young cow from the very last calf crop at Angus Glen she has a packed pedigree with Right Time 338 and Fullback on the bottom, Sudden Impact on the top. She will have calved by sale date. Smokin Joe is giving us our best calves this year should be a real nice pair come sale day.
Exposed to Upper Glen Smokin Joe 6807
June 25th 2012.



PLAINVIEW SUDDEN IMPACT D27

EPDs

BW 3.4 WW 48 YW 80 MM 20 TM 44 CE 3.0

Timber Trail Angus

39

Timber Trail Queen 5T

Black Female TMBR 5T 1426997 19/02/2007

Sire: WHITESTONE WIDESPREAD MB

{ N BAR EMULATION EXT
M B RACHEL 2173
{ TC STOCKMAN 365
GREENBUSH QUEEN 12F

Dam: J D QUEEN 13L

With regrets we are parting with one of our very best ET females. Queen is a maternal sister to the well known Scotia Classic winner Hawthorn Queen. This deep sided, big hipped female will produce those front pasture calves we all wish for. Our Canadian show bull champion has sired another great **bull calf** here at her side which she has done an great job on (born Jan. 21/13). Sieze this opportunity to acquire one of these first Edgars. Bred back to **Edgar** due Jan 1st 2014.



Edgar

40

Tambri Bo Peep 17T

Black Female TMJ 17T 1374664 04/02/2007

Sire: TAMBRI ROADHAMMER 1R

{ TC FREEDOM 104

{ TAMBRI YOUNKIN DAISY 5L

Dam: TAMBRI BO-PEEP 8R

{ RANGER G 1720

{ TAMBRI BOO-PEEP 1G

Long bodied, deep ribbed well uddered cow sired by a TC freedom son. **Bull calf** at side by BC Eagle Eye born Jan 24th. Bred back to **Just Enough New Edition Edgar** the 2012 Canadian show bull of the year! Due January 1st.

EPDs

BW 3.1 WW 49 YW 81 MM 19 TM 44 CE 1.0

41

Dryland Jestress 704

Black Female DLA 704T 1413201 12/02/2007

Sire: DRYLAND CHIEF 307

{ CRESCENT CREEK CHIEF 80G

{ HIGH VALLEY 3D4 OF K821

Dam: DRYLAND JESTRESS 520

{ CAR ICEBERG 056

{ DWAJO JESTRESS 29J

Bull calf born Jan. 12/13. (LELA 15A)

Sired by KG smart One 9116 BW: 86 lbs

Will be bred by sale.

EPDs

BW 3.6 WW 37 YW 68 MM 15 TM 34 CE -1.0

42

Barbara Of Peak Dot 433S

Black Female PDAR 433S 1348357 08/02/2006

Sire: STEVENSON BRUNO 6371

{ STEVENSON BRUNO 561G

{ STEVENSON QUEEN 828F

Dam: BARBARA OF PEAK DOT 942H

{ CHAMPION HILL GENERAL STONE

{ BARBARA OF PEAK DOT 316Y

Barbara comes to the sale with a Coleman Regis **Heifer Calf born** February 1st at side. Her Density daughter produced a herd sire for Maple Line Angus. She is bred to **Connealy Confidence** on March 23, 2013.

EPDs

BW 2.8 WW 35 YW 67 MM 20 TM 38 CE 7.0

43

J P D Blue Lass 18S

Black Female JPDH 18S 1322257 11/02/2006

Sire: CUDLOBE MILLENNIUM 6M

{ CUDLOBE MILLENNIUM 46K
{ CUDLOBE LADY DI 28F

Dam: J P D BLUE LASS 21N

{ J P D GALILEO
{ LLB BLUE LASS 242L

Lass has done a great job for us here the last two years, and this year gave us this great **heifer calf** sired by SAV Free Spirit! WMC Lass 6A will go on and be a great female for her new owners whether they decide to show her or add to their herd! Bred to **SAV Density** on April 19/13.

EPDs

BW 6.6 WW 44 YW 73 MM 16 TM 38 CE -12.0

Dan Findlay

44

Sunset Bessie 5P

Black Female SUF 5P 1233143 07/02/2004

Sire: DA ES RO TWISTER 0627

{ KRUGERRAND OF DONAMERE 490
{ DE KAP RITO BURGESS 682

Dam: STALBURN BESSIE 7B

{ RED BUFCR ARROWHD VC1237
{ STALBURN BESSIE 78T

A really big-ribbed, large hipped, powerhouse of a cow here with a extra thick **steer** calf born in January, at side.

Bred **DMM Dynasty 03G**, preg checked safe in calf, due Jan. 6/14.

Timber Trail Angus

45

Maple Line Karama 23T

Black Female IRA 23T 1403576 22/03/2007

Sire: MAPLE LINE DATELINE 14R

{ HEATHCOTE DATELINE 523
{ MAPLE LLINE FIRST CLASS 37N

Dam: MAPLE LINE KARAMA 1K

{ RED SL BOMBA 15A
{ KARAMA T OF MOONMIST 18B

Sharp looking, long bodied, great milking cow with her Feb 21st **bull calf** sired by JL Objective 9059. Bred back to **Just Enough New Edition Edgar** by sale day. More info on sale day.

EPDs

BW 3.8 WW 35 YW 56 MM 12 TM 30 CE -1.0



JUSTAMERE 1118 CASH 665P
3/4 brother



REMITALL KEEPSAKE 143L
Dam to Cash and 945W

Sunset Acres

46

Justamere 1537 Keepsake 945W

Black Female AFA 945W 1527142 31/03/2009

Sire: EXAR SUDDEN IMPACT 1537

{ NORTHERN IMPROVEMENT 4480 GF
B L R BLUSHING PRIDE 9097

Dam: REMITALL KEEPSAKE 143L

{ SITZ ALLIANCE 6595
REMITALL KEEPSAKE 103J

Justamere 1537 Keepsake 945W is a real deep stout cow out of an outstanding cow Remintall Keepsake 143L. The Keepsake family has produced many champions and Justamere 1118 Cash 665P is a son of 143L. We were very reluctant to put this female in the sale and would be interested in retaining a flush with the new owners.

Heifer calf at foot by Sunset Pinch Hitter. Born March 4 2013.

AI bred to **Windfall** on May 10, 2013.

EPDs BW 3.1 WW 49 YW 86 MM 36 TM 61 CE 3.0

Timber Trail Angus

47

Timber Trail Gridlock 16Z

Black Male TMBR 16Z 1690294 15/02/2012

Sire: BELLSTAR BLACKHAWK 1X

{ DUFF ENCORE 702
YCC FAVORITES ROXY
TIMBER TRAIL GRIDLOCK
{ DRYLAND FOREVER LADY 354

Dam: LLB FOREVER LADY 664W

This Bellstar Blackhawk son is free moving, sound legged with good testicle development. His dam is a Timber Trail Gridlock daughter who is perfect uddered and moderately framed. She finished in the top one percentile for weighing weight at LLB.

48

Matt Glenn

HAWTHORNE WIDESPREAD 24Y

Black Male RBB 24Y

1650670 20/03/2011

Sire: WHITESTONE WIDESPREAD MB

{ N BAR EMULATION EXT

{ M B RACHEL 2173

Dam: LLB NELLIE PRIDE 344U

{ LLB 2166 BANDO 184S

{ LLB NELLIE PRIDE 384K

Extra age and experience come with this bull as he has been our main sire for 2 years now. Purchased along side his dam, at a previous OVAC Classic sale. He offers exceptional maternal power.

EPDs

BW 3.9 WW 53 YW 87 MM 13 TM 39 CE 0.0



Hawthorne Widespread 24Y

49

Sunset Acres

Sunset Bismark 1Z

Black Male SUF 1Z

1666338 01/01/2012

Sire: S A V BISMARCK 5682

{ G A R GRID MAKER

{ S A V ABIGALE 0451

Dam: TAMBRI CATHY 5P

{ WHITESTONE WIDESPREAD MB

{ TAMBRI HULK CATHY 5J

Here is the herd bull you have been looking for. Real deep, great disposition, thick, great footed, large testicles. SAV Bismark is one of heaviest used bulls in North America and Bismark put a stamp of quality in every animal. Sunset Bismark is on our show string. We would continue to show the bull if the new owner chooses to.

EPDs

BW 0.7 WW 47 YW 85 MM 18



S A V BISMARCK 5682

South Shore Farms

Dispersal

On behalf of everyone at South Shore Farms we'd like to invite you to attend our herd dispersal at the OVAC Classic Sale on Saturday June 1, 2013. Breeding quality Angus cattle has been our passion for the past several years, and we'd like to thank this great breed and our industry friends for making this journey one we'll never forget.

The females presented on June 1, 2013 will be angular, deep bodied and good-footed, with the ability to add performance, thickness and strong maternal traits to their offspring. Virtually every female selling will be AI'd to top proven herd sires in the industry, to produce the kind of cattle that are in huge demand. Rest assured this cow herd is young and fertile, and it has been culled heavily on the basis of udders, feet and performance.

One of the most recognizable and famous cow families that makes up the majority of our herd is the Miss Daisy cow family that came to us from Brantnor Angus. The Miss Daisy's have proven themselves, time and time again, with phenomenal show and sale success, paralleled by their outstanding performance and superior maternal traits in the field. These cows offer predictability and goodness, better than any other cow family we've raised.

We're very confident in saying that there will be females in this sale that please even the most astute Angus Breeders. Whether you're starting an Angus herd, adding some new genetics, or looking for your next show prospect, please join us on Saturday June 1, 2013. For more information, please feel free to call Matt's cell at 705-341-9510.

Yours truly,
Matt, David, Cindy Bates
South Shore Farms
705-887-6420





South Shore Farms

50

South Shore's Miss Daisy 5Z

Black Female DRB 5Z 1660674 28/03/2012

Sire: BRANTNOR'S FREEDOM 15U

{ TC FREEDOM 104

{ BRANTNOR'S FLORA 11R

Dam: SOUTH SHORE MISS DAISY 1U

{ BRANTNOR'S BESTMAN 15R

{ BRANTNOR'S MISS DAISY 19S

Here's a show prospect with time-tested genetics on the top and bottom. Sharp fronted, lean necked with a square and level design, here's one that deserves a closer look. Her full sister was grand champion female at achievement day 2012, and sold for \$3700 in the 2012 futurity sale to the RK Syndicate. Cut from the same cloth as her dam, she's smooth made with ample power, performance and dimension. I could write pages about the achievements of these Miss Daisy's, but I'll leave you to write your own success story on this one. To begin the story, we'll have her bred to **HF Kodiak 5R** by sale day or sold with a vial.

EPDs BW 2.2 WW 42 YW 79 MM 18 TM 39 CE 7.0

BRANTNOR'S MISS DAISY 19S





South Shore Farms

51

South Shore's Miss Daisy 8Z

Black Female DRB 8Z 1660675 01/04/2012

Sire: BRANTNOR'S FREEDOM 15U

{ TC FREEDOM 104

{ BRANTNOR'S FLORA 11R

Dam: BRANTNOR'S MISS DAISY 19S

{ BRANTNOR'S BANDO 9M

{ BRANTNOR'S MISS DAISY 9N

Get out the leather, you'll just have to take this one to town. Here's a powerful junior yearling, who should gather crowds of attention on sale day. She portrays about as much pure cow as any female in the sale, and backs that up with her outstanding dam 19S. We didn't show cattle back when 19S was young; however, were pretty confident she would've been a contender. After all, 19S's maternal sister, Brantnor's Miss Daisy 4Y, was 2011 Senior Heifer Calf Champion at the Royal, 2011 Brampton Preview Reserve Grand Champion Female and 2011 Ontario Show female of the year. 19S's other sister, Brantnor's Miss Daisy 12Z, was 2012 Intermediate Heifer Calf Champion at the Royal and then went on to top the 2012 futurity sale at \$5250. No doubt you can see the predictability here as we have the same high expectations for this outstanding daughter of 19S. Check out the production career of her sister 1U to assure yourself even more. If her overall power, performance and shape doesn't overwhelm you enough, add in the fact that she'll be bred to **HF Kodiak 5R** by sale day or sold with a vial.

There's no guessing on this one... It's all good!

EPDs

BW 2.9 WW 46 YW 83 MM 18 TM 41 CE 4.0



Brantnor's Miss Daisy 12Z

52

South Shore Farms

South Shore's Miss Daisy 7Z

Black Female DRB 7Z 1660673 28/03/2012

Sire: BRANTNOR'S FREEDOM 15U

{ TC FREEDOM 104

{ BRANTNOR'S FLORA 11R

Dam: BRANTNOR DAISY 16U

{ KRUGERRAND OF DONAMERE 490

{ ANGUS GLEN MISS DAISY 22H

7Z is a larger framed March yearling heifer that puts it all together nicely. Not to mention she gets better every single day. She has a full sister working at HD Cattle Company.

She'll be bred to **DAJS Shockwave 612** by sale day or sold with a vial.

EPDs

BW 5.1 WW 45 YW 81 MM 21 TM 44 CE -3.0



DAJS Shockwave 612

53

South Shore Farms

South Shore's Miss Daisy 11Z

Black Female DRB 11Z 1660676 02/05/2012

Sire: S A V MANDAN 5664

{ S A V 8180 TRAVELER 004

{ S A V ABIGALE 0451

Dam: SOUTH SHORE'S MISS DAISY 1X

{ BRANTNOR'S FREEDOM 15U

{ SOUTH SHORE MISS DAISY 1U

Definite contender here sired by the great SAV Mandan 5664. I sure wish I had time to picture this gem, as she profiles as good as any. Just a May heifer, she's feminine, correct, and just downright cool.

She'll be bred to **DAJS Shockwave 612** by sale day or sold with a vial.

EPDs

BW 3.9 WW 55 YW 103 MM 27 TM 55 CE -3.0



DAJS Shockwave 612



South Shore Farms

54

Brantnor's Katrina 2X

Black Female RON 2X 1549495 02/01/2010

Sire: GAMBLES HOT ROD

{ FAMOUS 7001
 { CHAMPION HILL LADY 703
 { DMM MAKIN' WAVES 43M
 { WYNFIELD KATRINA

Dam: OAK LANE KATRINA 12U

Here's a really useful cow that just does it all. Milks, breeds early, and stays in good shape. Not to mention she's a direct daughter of Gambles Hot Rod. Also, her paternal sister, Brantnor's Favorite 1X, was Supreme Grand Champion Female at the Brampton Preview Show in 2011. Expect problem free production from this 3 yr old gem for years to come. Be sure to analyze her picture perfect udder. She sells with her bull calf at side born Jan 12/2013, sired by SAV Mandan 5664. To enhance the deal a little more, we bred her to **HF Kodiak 5R** on April 2, 2013 for an early 2014 calf.

EPDs

BW 3.0 WW 47 YW 86 MM 17 TM 41 CE 5.0

HF Kodiak 5R



55

South Shore Farms

South Shore's Miss Daisy 1X

Black Female DRB 1X 1578929 11/05/2010

Sire: BRANTNOR'S FREEDOM 15U

{ TC FREEDOM 104

{ BRANTNOR'S FLORA 11R

Dam: SOUTH SHORE MISS DAISY 1U

{ BRANTNOR'S BESTMAN 15R

{ BRANTNOR'S MISS DAISY 19S

Here's a cow who won her class at 2 of 3 fairs she attended as a yearling, including Lindsay and Fenelon. Her family speaks for itself in terms of performance and predictability. When you see her 2012 calf 11Z who sells in this sale, you'll have no doubt as to her production capabilities. She calved late in 2012, so we decided to leave her open to move her back to an earlier calving. AI bred to **DAJS Shockwave 612** on May 12/13.

EPDs

BW 3.1 WW 47 YW 88 MM 19 TM 43 CE 6.0



BRANTNOR'S MISS DAISY 19S

56

South Shore Farms

South Shore's Miss Edam 6X

Black Female DRB 6X 1578928 11/06/2010

Sire: BRANTNOR'S FREEDOM 15U

{ TC FREEDOM 104

{ BRANTNOR'S FLORA 11R

Dam: BRANTNOR EDAM 19U

{ BRANTNOR'S RIGHTWAY 1S

{ BRANTNOR'S MISS EDAM 1M

Shown as a yearling and productive as any, 6X is one of those cows that really does her job. Her 2012 Bull calf by Tiger really turned some heads, and this young cow is destined to do it again.

DRB 6X calved April 22, 2013. **Heifer calf** named South Shore's Miss Edam 8A, sired by **Soo Line Grizzly 9034**.

EPDs

BW 3.9 WW 46 YW 78 MM 20 TM 43 CE 3.0



BRANTNOR'S EDAM 16X ~ granddaughter of 1M



Matt Bates

South Shore Farms

57

Brantnor's Erroline 29W

Black Female RON 29W 1533065 27/04/2009

Sire: BRANTNOR'S FREEDOM 23T

{ TC FREEDOM 104
 { BRANTNOR'S MISS DAISY 9N
 { S A F FOCUS OF E R
 { BRANTNOR'S ERROLINE 11E

Dam: BRANTNOR'S ERROLINE 18L

Here's a cow that's as complete as any with a massive mid section and buckets of milk. It's hard to argue with her when she brings in one of the heaviest calves each year. Surely this year will be no exception as she sells with **heifer calf**, South Shore's Erroline 7A, at side, sired by SAV Mandan 5664, born April 1, 2013. You should have some fun in the junior yearling class with this stout calf next year. Bred to **DAJS Shockwave 612** on May 13/2013.



EPDs

BW 4.3 WW 46 YW 82 MM 20 TM 43 CE -2.0

DAJS Shockwave 612



South Shore Farms

58

South Shore Miss Daisy 1U

Black Female DRB 1U 1482808 21/07/2008

Sire: BRANTNOR'S BESTMAN 15R

{ C A FUTURE DIRECTION 5321
BRANTNOR MISS EDAM

Dam: BRANTNOR'S MISS DAISY 19S

{ BRANTNOR'S BANDO 9M
BRANTNOR'S MISS DAISY 9N

A sale feature who's production career speaks for itself... Her first calf 1X won her class at 2 of the 3 fairs she was shown at and also sells in this sale. Her next calf 5Y was slapped grand champion female at 4H achievement day in 2012, and went on to sell for \$3700 in the futurity sale. Her third calf 5Z is a promising yearling heifer who also sells in this sale. 1U sells with her fourth calf, South Shore's Miss Daisy 3A, at side, sired by Sitz Upward 307R, and born March 3/2013. This **heifer calf** is bound to be competitive, and productive just like her dam. 1U is level rumped, big ribbed, smooth jointed, and sound as they come. Note she is a direct daughter of the great Brantnor's Miss Daisy 19S who has had such an impact on our herd. Check out her maternal sister 8Z who is another feature in this sale. Here's a proven young cow from a proven family.

As if the deal isn't sweet enough, bred to the great **HF Kodiak 5R** on May 14/2013. It's hard to beat this 3 in 1 package!

EPDs

BW 3.4 WW 42 YW 79 MM 18 TM 39 CE 6.0



South Shore Farms

59

Brantnor Daisy 16U

Black Female RON 16U 1458018 05/03/2008

Sire: KRUGERRAND OF DONAMERE 490

{ CAVALIER OF DONAMERE 978
DONAMERE BACHEL BEAUTY 288

Dam: ANGUS GLEN MISS DAISY 22H

{ ALCHEMY NUMBERS 2E
ANGUS GLEN MISS DAISY 16X

If you like pedigrees, here's one that you'll really appreciate. 16U is a full sister in blood to Brantnor's Miss Daisy 9K, who was Reserve Grand Champion Female at the Royal in 2000 as A CALF! She is also a full sister to Brantnor's Miss Daisy 27S who was named Reserve Grand Champion Female at the Royal in 2007. Backed by a family of greatness, look at 16U's heifer calf at side and you'll expect no less. She already has a daughter working at HD Cattle Company, and another one selling in this sale. South Shore's Miss Daisy 4A (**heifer calf**) sells at her side, born March 4/2013, sired by the \$180 000 Pioneer son, SAV Potential 0205. If you still need convincing, add the fact that she is bred to **DAJS Shockwave 612** on May 8th. Truly a unique package.

EPDs

BW 6.2 WW 40 YW 74 MM 23 TM 43 CE -7.0

60

*South Shore Farms***Brantnor Edam 19U**

Black Female RON 19U 1434094 23/04/2008

Sire: BRANTNOR'S RIGHTWAY 1S

{ HYLINE RIGHT WAY 781

{ BRANTNOR'S DELIA 8P

Dam: BRANTNOR'S MISS EDAM 1M

{ S A F 598 BANDO 5175

{ BRANTNOR MISS EDAM 13F

19U is a front pasture cow that were really going to miss. She's a deep bodied, high volume, smooth made female, and by far the quietest cow to ever land at South Shore Farms. Analyze her impeccable udder structure, feet, and legs; she's the kind we've been trying to make more of. She has a daughter working at Maple Line Farms, and another one selling in this sale. She's had a **bull calf** May 4/ 2013 from Brantnor's Predominant 31Y, the Reserve Junior Champion Bull at the 2012 Brampton Preview Show. Expect greatness from this package.

EPDs

BW 4.1 WW 47 YW 78 MM 21 TM 45 CE 1.0



61

*South Shore Farms***Brantnor Daisy 20U**

Black Female RON 20U 1434095 25/04/2008

Sire: BRANTNOR'S RIGHTWAY 1S

{ HYLINE RIGHT WAY 781

{ BRANTNOR'S DELIA 8P

Dam: BRANTNOR MISS DAISY 9K

{ KRUGERRAND OF DONAMERE 490

{ ANGUS GLEN MISS DAISY 22H

20U is an impressive daughter of Brantnor's Miss daisy 9K who was Reserve Grand Champion Female at the Royal in 2000 as A CALF! 20U is a deep bodied, long spined individual with ample mass and capacity. She's truly bred for longevity like her 12-year-old dam who's still in production. Sells with her **Bull calf** at side, sired by SAV Mandan 5664, born March 6/2013. She is bred to May 12/2013 to **DAJS Shockwave 612.**

EPDs

BW 4.9 WW 49 YW 80 MM 24 TM 49 CE -5.0



TERMS AND CONDITIONS

TERMS - The terms of the sale are cash or cheque payable at par at sale location unless satisfactory credit arrangements have been made prior to the sale. The right of property shall not pass until after settlement is made. Ottawa Valley Angus Association reserves the right to require a certified cheque as settlement before releasing any sale cattle. Should the purchaser fail to settle for his purchase, Ottawa Valley Angus Association reserve full power to resell the animal to the best advantage either publicly or privately, without further notice. Any loss arising from such resale together with keep and all other expenses shall be payable by the defaulter. All settlements must be made with the clerks of the sale before any cattle will be released. The owners, Ottawa Valley Angus Association and sales staff have the right to refuse bids from anyone who has a previous record of default in payment and or who has not made prior credit arrangements, prior to the sale with the owners and or Sales Management.

BID - Every animal consigned to the sale must be sold by auction. No by-bidding will be permitted. Each animal will be sold to the highest bidder.

DISPUTES - In cases of disputes, bidding will be reopened between the parties involved. If no further bid is made the buyer will be the person from whom the auctioneer accepted the last bid. The auctioneer's decision in such matters will be final.

PURCHASER'S RISK - Each animal becomes the risk of the purchaser as soon as sold **ANNOUNCEMENTS** from the auction block will take precedence over printed matter in the catalogue. Buyers are therefore cautioned to pay attention to any such announcements.

CERTIFICATE OF REGISTRY - The proper Registration or Recordation paper, as the case may be, will be duly transferred and furnished to the buyer for each animal after settlement has been made.

SHIPPING - Assistance will be given in making shipment after the sale but no risk is assumed by Sales Management or Seller. Expenses incurred are the responsibility of the purchaser. Purchasers are requested to furnish shipping instructions when making settlement.

GUARANTEE - All animals will carry standard breeding guarantee as specified by the Canadian Angus Association. At no time shall the seller's liability exceed the purchased price of the animal.

EXCEPTION TO GUARANTEE - In cases where the animal is subjected to any hormonal or surgical reproduction techniques after the sale, the guarantee shall be null and void. In the cases of bulls, they are guaranteed to breed naturally according to Canadian Angus Association Guarantee but no guarantee is given that semen from any bull will freeze.

HEALTH - All animals will have passed the required tests as determined by Agriculture Canada at sale location. It is the buyer's responsibility to determine health requirements for importing any animal into his province or state. Ottawa Valley Angus Association assumes no responsibility for the health status of any animal in the sale.

ACCIDENTS - Although every precaution will be taken to protect the safety and comfort of buyers, neither the Sales Management, auctioneer, or Association assumes any responsibility in this matter and disclaims any liability legal or otherwise in the event of accident or loss of property.

RIGHTS AND OBLIGATIONS - The above terms and conditions of the sale shall constitute a contract between the buyer and the seller and be equally binding to both. Resale of animals following purchase in this sale shall constitute a separate transaction and the rights and obligations of the two parties connected thereto are not covered by the terms and conditions of this sale.

OTTAWA VALLEY ANGUS ASSOCIATION IS AN AGENT ONLY - It is clearly understood that Ottawa Valley Angus Association, acts only as agent between buyer and seller and is not in any way responsible for any failure by either party to live up to his or her obligations. Ottawa Valley Angus Association does not assume any financial obligations to collect or enforce collection of moneys by either parties, and in exceptional case, any legal action will be between buyer and seller. Ottawa Valley Angus Association has no ownership of the facility and assumes no responsibility for the operation of said facility.

LIABILITY - All persons who attend this sale do so at their own risk and the owners, auctioneers, management and staff assume no liability, legal or otherwise, for any accident that may occur. Selby Livestock & Auction Center is an agent only. It is to be understood that Selby Livestock & Auction Center is only acting as a medium between buyer and seller and is not in any way responsible for any failure on the part of either part to live up to his/her obligations.



Sunset Acres



2012 RAWF Breeder's Herd

Rob & Sandy Foubert
4373 Rideau River Road
Kemptville, ON K0G 1J0
613-791-8151
rfoubert@dct.ca

Visitors Welcome

JUST ENUFF NEW EDITION EDGAR

Semen Packages Available



Supreme Champion All Breeds Pennsylvania Farm Show
Supreme Champion All Breeds Pennsylvania Breeder's Show
Supreme Champion All Breeds Peterborough, Renfrew & South Mountain Fairs
Grand Champion Bull Brampton Preview 2012
Grand Champion Bull Victoriaville Expo Bouef 2012
Grand Champion Bull Royal Winter Fair 2011
All Canadian Junior Champion Bull 2011
Canadian Show Bull of the Year 2012

TIMBER TRAIL EDGAR 3Z

Semen Packages Available



Sired by Just Enuff New Edition Edgar
Calf Champion Brampton Preview Show 2012

TIMBER TRAIL ANGUS

Doug, Stephanie, Bryson & Kyle Fisher
3289 Munster Road
Richmond, ON, KOA 2Z0
613-298-3146
doug.fisher@ottawa.ca

Embryos Available ~ Inquiries Welcome